

2005

Forever Earth Program: An Overview

Public Lands Institute

Follow this and additional works at: https://digitalscholarship.unlv.edu/pli_discover_mojave_presentations



Part of the [Environmental Monitoring Commons](#), [Natural Resources and Conservation Commons](#), and the [Science and Mathematics Education Commons](#)

Repository Citation

Public Lands Institute (2005, January). Forever Earth Program: An Overview. Presentation at Forever Earth Program: An Overview, University of Nevada, Las Vegas.

Available at: https://digitalscholarship.unlv.edu/pli_discover_mojave_presentations/2

This Presentation is protected by copyright and/or related rights. It has been brought to you by Digital Scholarship@UNLV with permission from the rights-holder(s). You are free to use this Presentation in any way that is permitted by the copyright and related rights legislation that applies to your use. For other uses you need to obtain permission from the rights-holder(s) directly, unless additional rights are indicated by a Creative Commons license in the record and/or on the work itself.

This Presentation has been accepted for inclusion in Presentations (DM) by an authorized administrator of Digital Scholarship@UNLV. For more information, please contact digitalscholarship@unlv.edu.

PUBLIC LANDS



Forever Earth Program: An Overview



The Commercial!

- Forever Earth program is delivered by UNLV's Public Lands Institute.
- On behalf of Bureau of Land Management, National Park Service, U.S. Fish and Wildlife Service and U.S. Forest Service – the Southern Nevada Agency Partnership.
- Funding is provided through the Southern Nevada Public Land Management Act.
- The houseboat was donated by Forever Resorts.

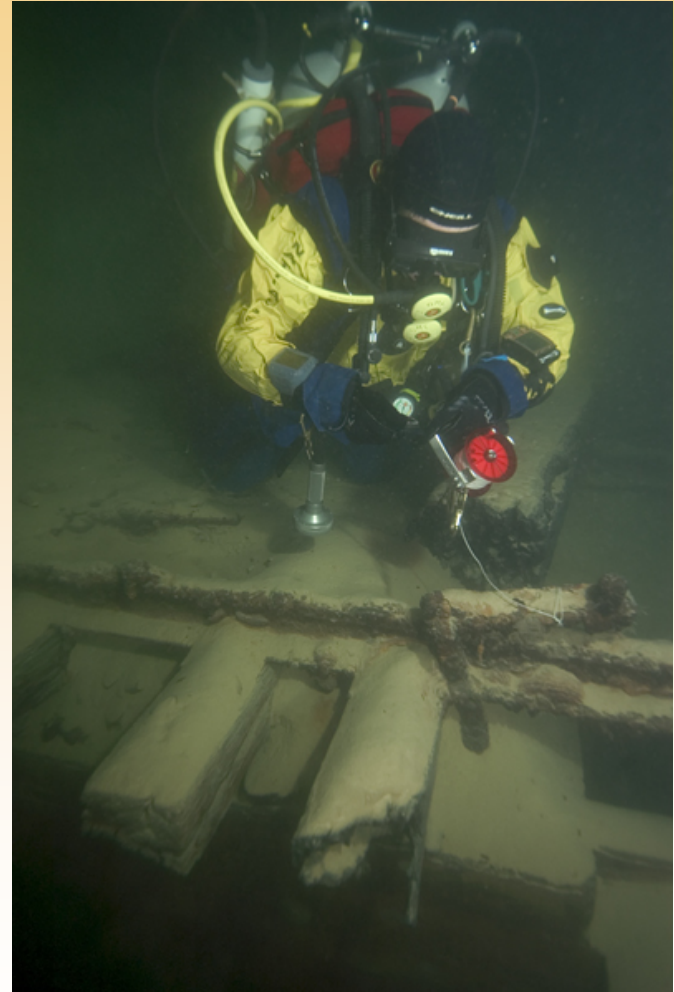


Forever Earth

Four Principal Uses:

- Education
- Scientific studies and research
- Water quality monitoring
- Command post activities

Photo courtesy of Brett Seymour,
Submerged Resources Center,
National Park Service



On Board



What You Need to Know Before Scheduling

- 25 passenger capacity (adults and students)
- Minimum age allowed – 4th grade
- NO COST to use Forever Earth
 - *1000 gallons of fuel being donated by a private company!
 - *Captain and deckhand provided
- National Park Service interpreter available upon request

A Few More Details

- Entrance fees waived.
- Forever Earth located at Callville Bay Marina.
- Group must agree to Cleaning Policy and other operating policies.
- Individuals must sign general liability release forms.
- Private school and home education groups may have other insurance requirements.

Scheduling Information

Contact:

Daphne Sewing

UNLV-Public Lands Institute

895-5098

daphne.sewing@unlv.edu

Look for website soon!

PUBLIC LANDS



THANK YOU!

