

2005

Inventing The Future 2005 Planning Retreat

Public Lands Institute

Follow this and additional works at: https://digitalscholarship.unlv.edu/pli_presentations



Part of the [Educational Leadership Commons](#), [Environmental Policy Commons](#), [Natural Resources Management and Policy Commons](#), and the [Sustainability Commons](#)

Repository Citation

Public Lands Institute (2005, January). Inventing The Future 2005 Planning Retreat. Presentation at Inventing The Future 2005 Planning Retreat, University of Nevada, Las Vegas.

Available at: https://digitalscholarship.unlv.edu/pli_presentations/24

This Presentation is protected by copyright and/or related rights. It has been brought to you by Digital Scholarship@UNLV with permission from the rights-holder(s). You are free to use this Presentation in any way that is permitted by the copyright and related rights legislation that applies to your use. For other uses you need to obtain permission from the rights-holder(s) directly, unless additional rights are indicated by a Creative Commons license in the record and/or on the work itself.

This Presentation has been accepted for inclusion in Presentations (PLI) by an authorized administrator of Digital Scholarship@UNLV. For more information, please contact digitalscholarship@unlv.edu.

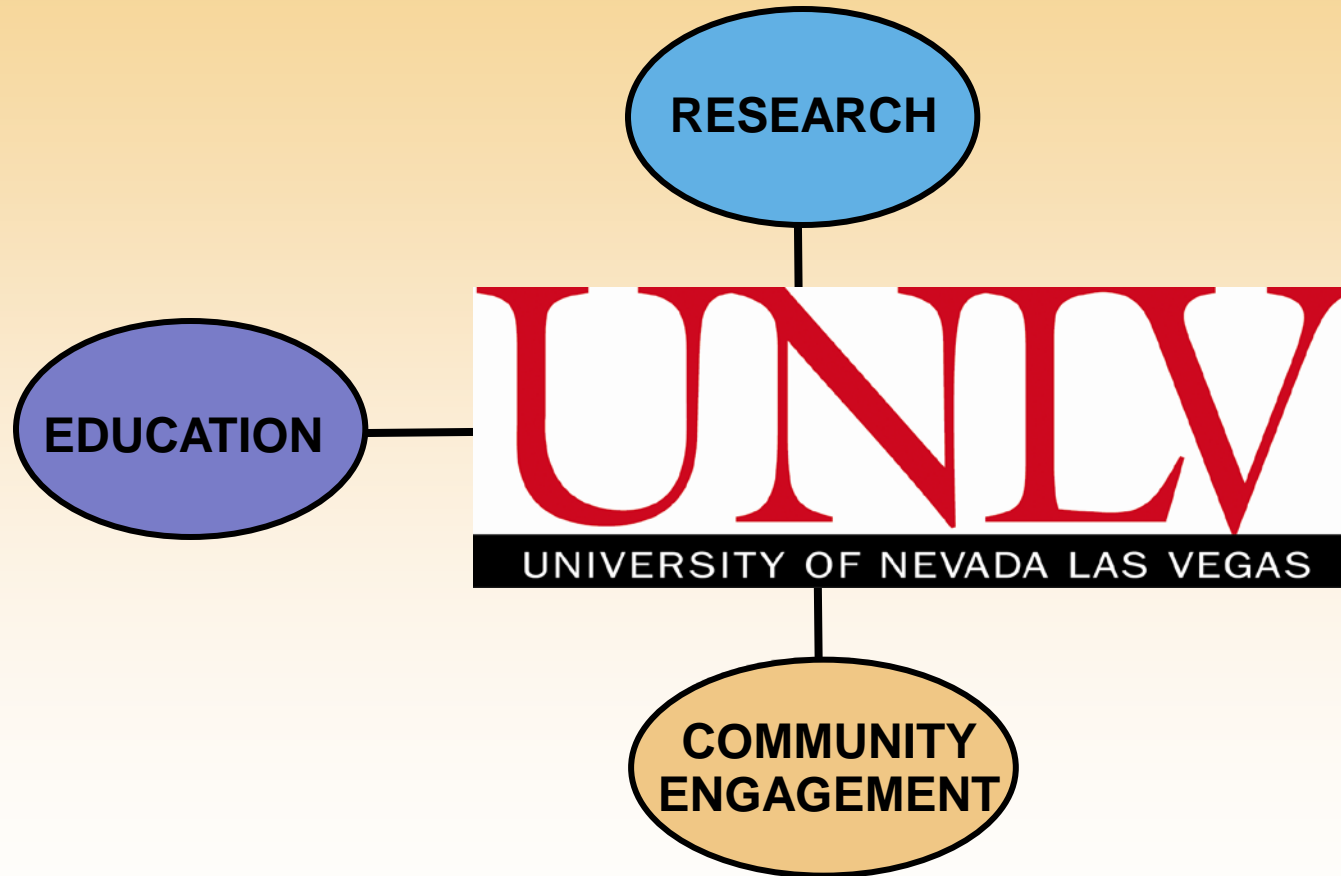
PUBLIC LANDS



INVENTING THE FUTURE

2005 Planning Retreat

Elements of the Engaged Research University



Engaging the Community



- Developing relationships
- Embracing opportunities
- Creating or filling a niche
- Offering infrastructure and university expertise
- Networking

Results of Our Community Engagement

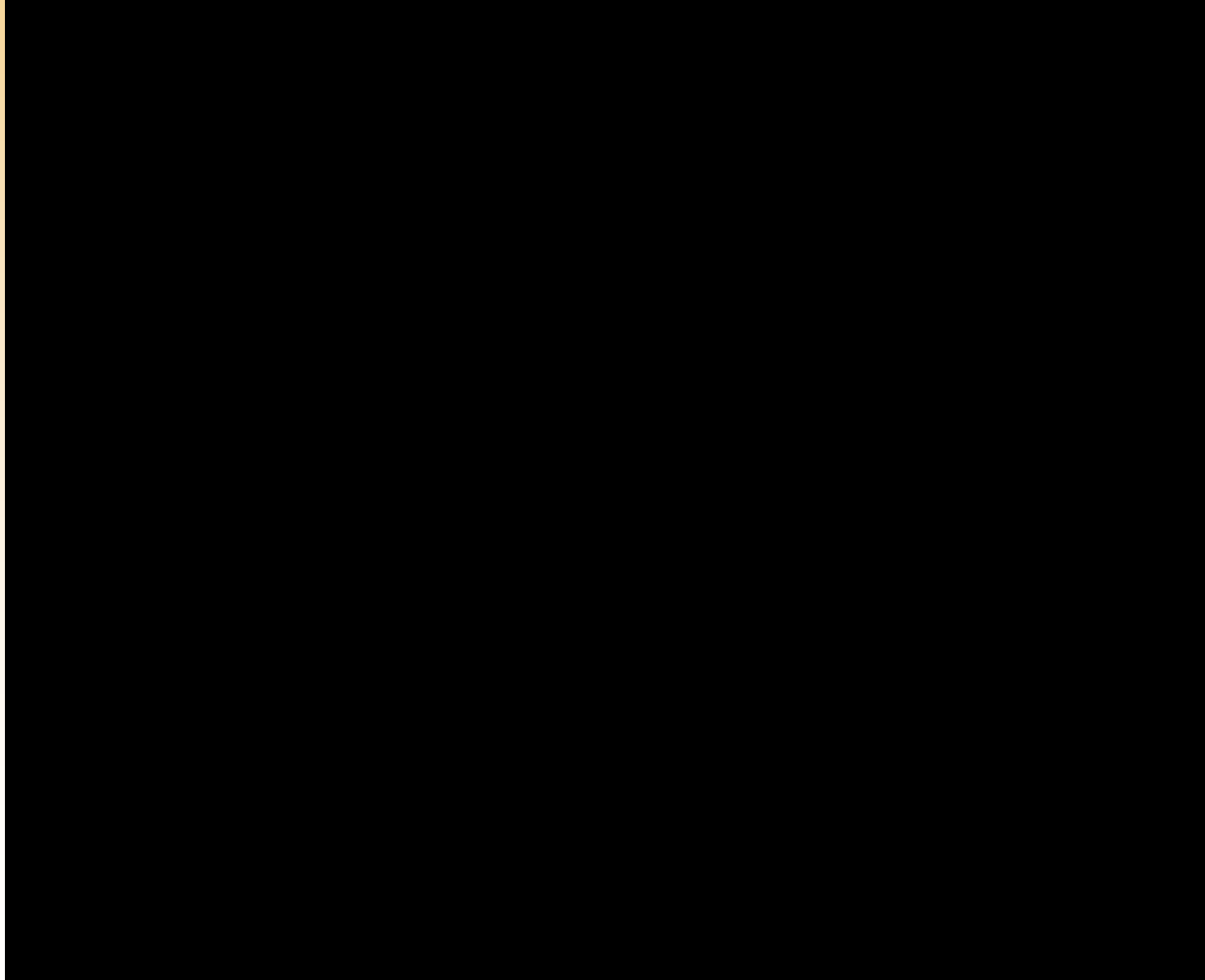


- Initiated January 2004
- 28 new employees
- \$11 million funding
- 27+ partners & friends

Developing Relationships



Embracing Opportunities Environmental Management Issues



Southern Nevada Public Land Management Act

- Federal legislation in 1998
- BLM to sell or exchange federally owned land in Clark County
- Approved sale of 50,000+ acres
- \$1.9 billion raised to date





SNPLMA Revenue

- Conservation Initiatives
- Capital Improvements
- Clark County Multi-Species Habitat Conservation Plan
- Parks, Trails, Natural Areas
- Environmentally Sensitive Land Acquisitions
- Clark County School District
- Southern Nevada Water Authority

Filling a Niche

- ✓ Conservation Initiatives
- ✓ Capital Improvements
- ✓ Clark County Multi-Species Habitat Conservation Plan
 - Parks, Trails, Natural Areas
 - Environmentally Sensitive Land Acquisitions
 - CC School District
 - Southern Nevada Water Authority





The Vision

- Foster an integrated, holistic approach to managing and stewarding public lands.
- Focus initially on externally funded cooperative conservation projects, research initiatives, and capital improvement projects.
- Attract projects that are local, regional, and national in scope.

Offering Infrastructure & Expertise

- **College of Business**
 - Department of Management Information Systems
 - Department of Public Administration
- **College of Education**
 - Department of Curriculum and Instruction
 - Department of Educational Leadership
 - Center for Evaluation and Assessment
- **College of Engineering**
 - Center for Transportation Research
- **College of Fine Arts**
 - School of Architecture
 - Department of Film
- **College of Liberal Arts**
 - Department of Anthropology
 - Department of History
- **College of Sciences**
 - Department of Biological Sciences
 - Department of Geoscience
- **College of Urban Affairs**
 - Department of Environmental Studies
 - Center for Urban Partnerships
- **William S. Boyd School of Law**
- **Facilities Management and Planning**
 - Office of Planning & Construction
 - Rebel Recycling Program
- **Student Life**
 - Center for Academic Enrichment & Outreach
 - Campus Recreational Services
- **Harry Reid Center for Environmental Studies**
- **National Supercomputing Center for Energy and the Environment**

Networking Partners & Friends

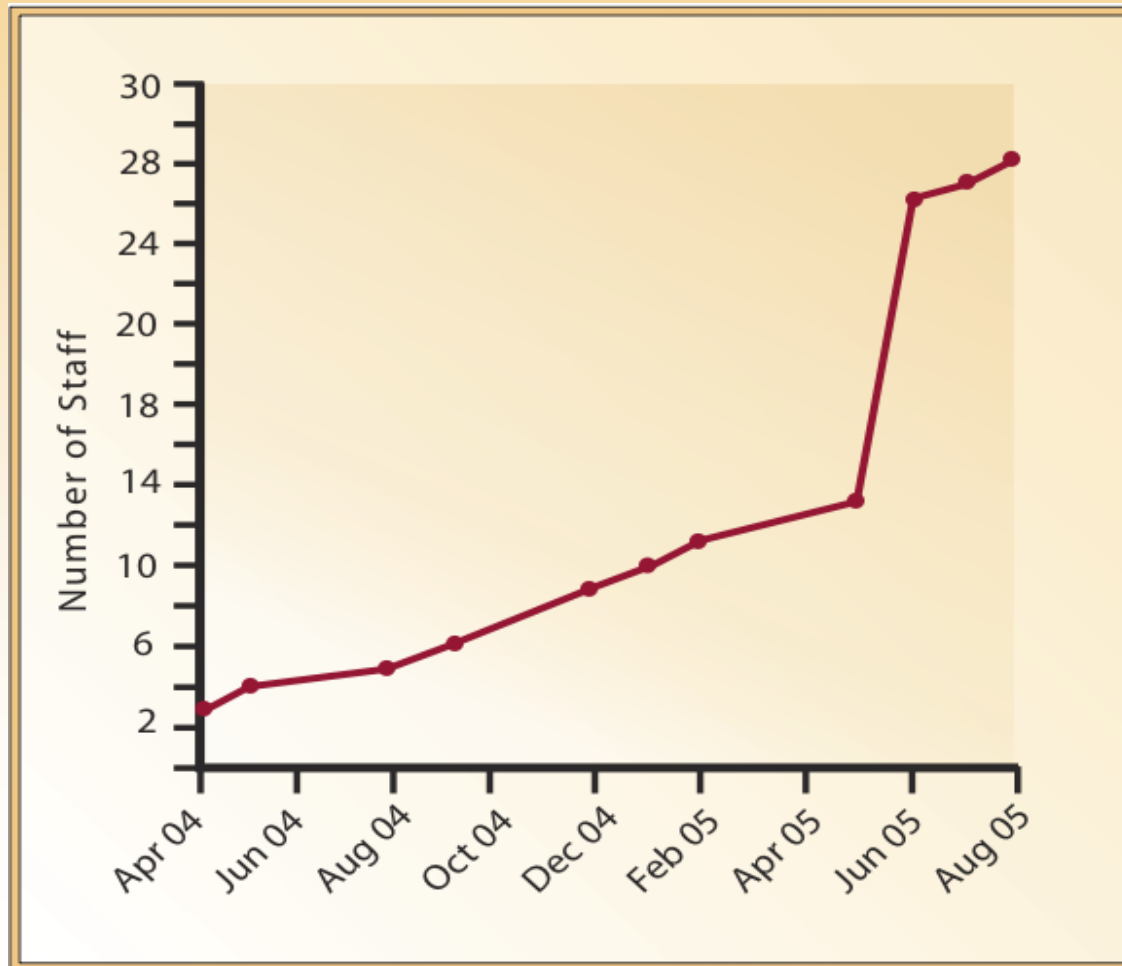
- American Recreation Coalition
- Archeo-Nevada Society
- Clark County Parks & Recreation
- Clark County School District
- Community College of So. Nevada
- Desert Research Institute
- Forever Resorts
- Friends of Gold Butte
- Friends of Nevada Wilderness
- Friends of Red Rock Canyon
- Friends of Sloan Canyon
- Great Basin Institute
- Mojave Rock Art Workshop
- National Wild Horse and Burro Association
- Nevada Archaeological Association
- Nevada Community Foundation
- Nevada Rock Art Foundation
- Nevada Wilderness Society
- Outside Las Vegas Foundation
- Paradise Professional Development School
- Pictographics
- Red Rock Canyon Interpretive Association
- River Mountains Trail Partnership
- Rivers, Trails and Conservation Assistance Program
- Southern Nevada Regional Trails Partnership
- Southern Nevada Rock Art Association
- Virgin River Conservation Partnership

Initiative to Institute

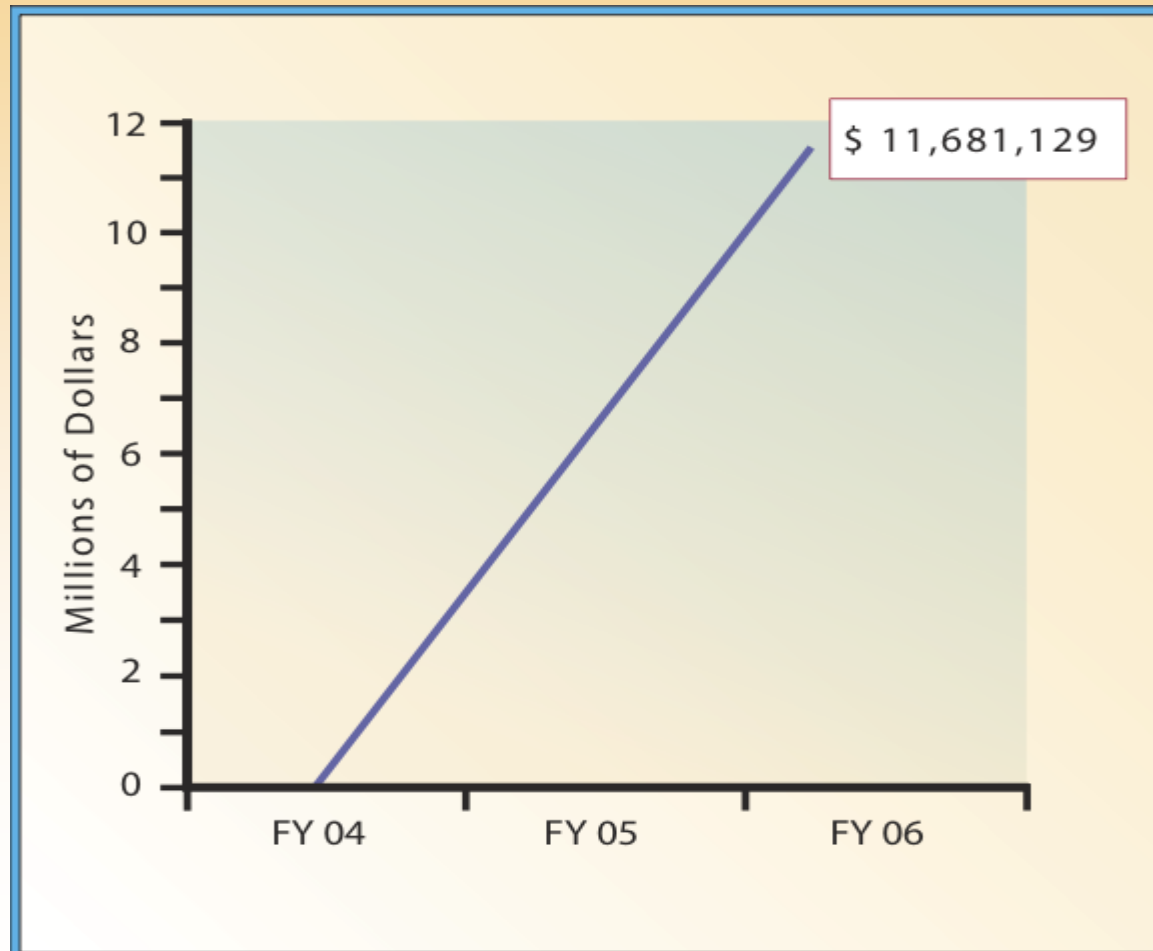
- Initiative began January 2004
- Institute approved April 2005



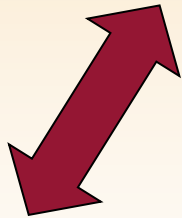
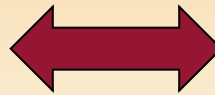
Institute Staffing



Institute Revenues



Collaborative Partnership



EDUCATION

Cooperative Agreements

- Education-in-the-Environment Strategy
- Red Rock Desert Learning Center
- Forever Earth Science Program
- Outdoor World Recreation Program
- Natural Resources Career Internship Program



DISCOVER
Mojave
OUTDOOR WORLD

RESEARCH

Cooperative Agreements

- Science and Research Strategy for Southern Nevada
- Field Monitoring and Data Management
- Alternative Workforce Study
- Judicial Analysis of Littering Fines
- Anti-Litter Strategy for Southern Nevada



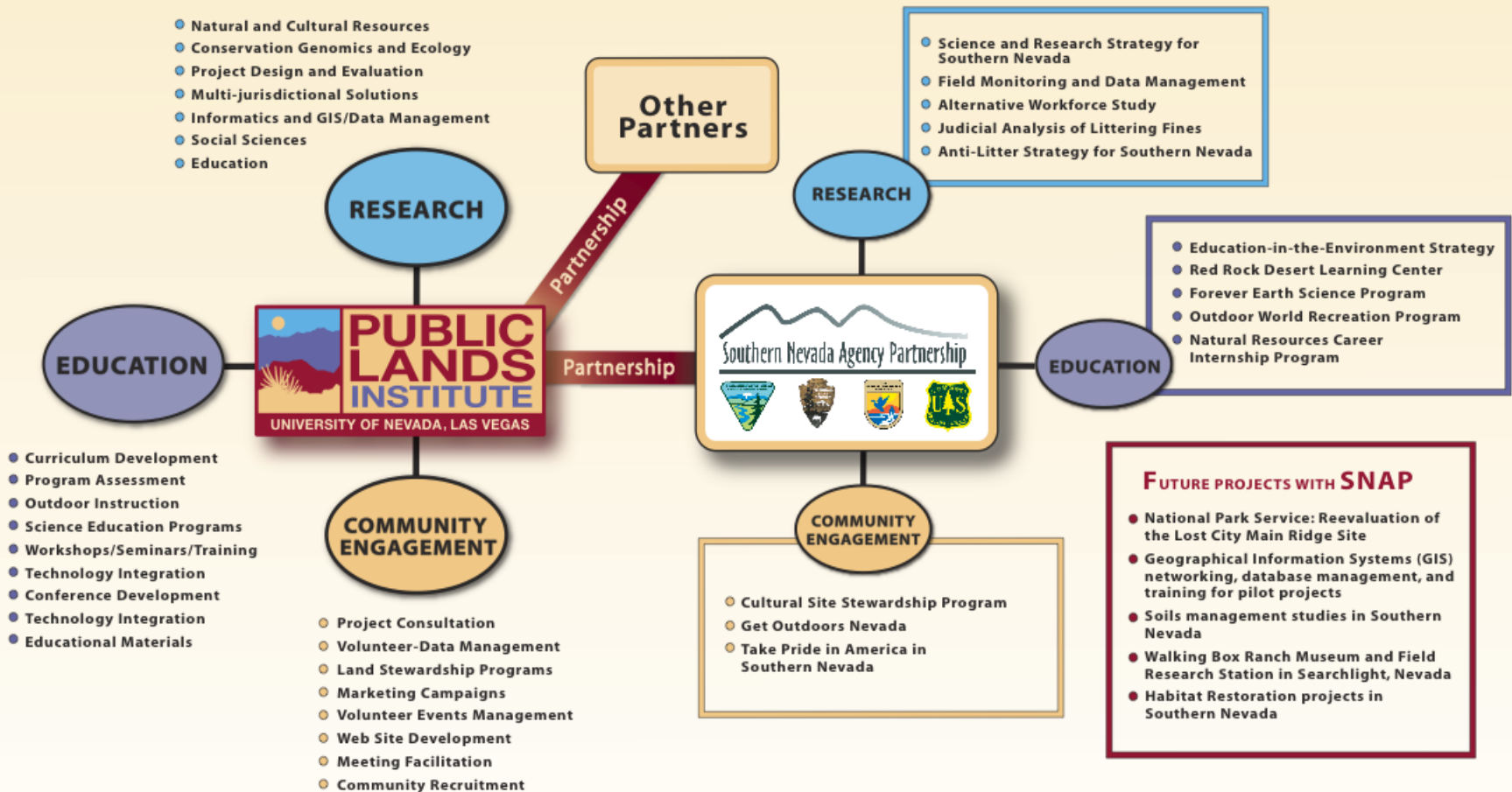
COMMUNITY ENGAGEMENT

Cooperative Agreements

- Cultural Site Stewardship Program
- Get Outdoors Nevada
 - Volunteer Program
- Take Pride in America in Southern Nevada
 - Anti-Litter Program



Partners in Cooperative Conservation



PUBLIC LANDS



Please contact us:

<http://publiclands.unlv.edu>

702.895.4678