

4-30-2018

The Shade Tree

Jody Chu

University of Nevada, Las Vegas, chuh3@unlv.nevada.edu

Follow this and additional works at: https://digitalscholarship.unlv.edu/educ_sys_202



Part of the [Education Commons](#), and the [Service Learning Commons](#)

Recommended Citation

Chu, Jody, "The Shade Tree" (2018). *Second-Year Seminar Posters (COE 202)*. 31.
https://digitalscholarship.unlv.edu/educ_sys_202/31

This Book is protected by copyright and/or related rights. It has been brought to you by Digital Scholarship@UNLV with permission from the rights-holder(s). You are free to use this Book in any way that is permitted by the copyright and related rights legislation that applies to your use. For other uses you need to obtain permission from the rights-holder(s) directly, unless additional rights are indicated by a Creative Commons license in the record and/or on the work itself.

This Book has been accepted for inclusion in Second-Year Seminar Posters (COE 202) by an authorized administrator of Digital Scholarship@UNLV. For more information, please contact digitalscholarship@unlv.edu.

THE SHADE TREE

JODY CHU

Organization

MY EXPERIENCE

Wall
Painting



Animals Care



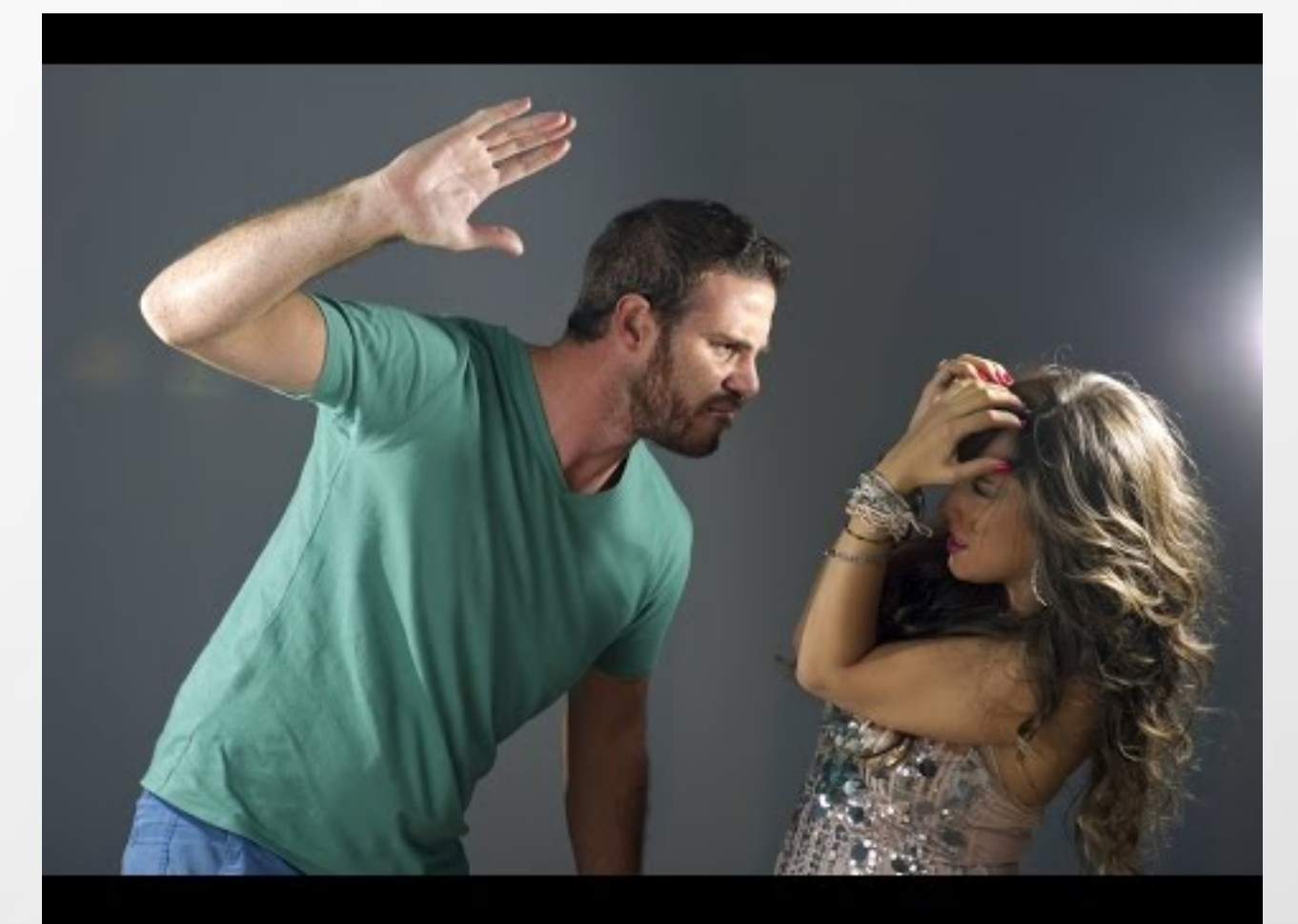
To provide safe shelter to homeless and abused women and children in crisis and to offer life-changing services promoting stability, dignity, and self-reliance



Self-reliance for every woman and child!

SOCIAL ISSUE

Domestic Violence



Domestic abuse, which includes emotional and verbal abuse, the number of occasions it rises to physical violence is stunning.