

6-22-2020

## Improving Access to Standards

Susan B. Wainscott

*University of Nevada, Las Vegas, sue.wainscott@unlv.edu*

Richard Zwiercan

*University of Nevada, Las Vegas, richard.zwiercan@unlv.edu*

Follow this and additional works at: <https://digitalscholarship.unlv.edu/libfacpresentation>



Part of the [Library and Information Science Commons](#)

---

### Repository Citation

Wainscott, S. B., Zwiercan, R. (2020, June). Improving Access to Standards. Presentation at 2020 ASEE Virtual Annual Conference, Virtual.

Available at: <https://digitalscholarship.unlv.edu/libfacpresentation/202>

This Presentation is protected by copyright and/or related rights. It has been brought to you by Digital Scholarship@UNLV with permission from the rights-holder(s). You are free to use this Presentation in any way that is permitted by the copyright and related rights legislation that applies to your use. For other uses you need to obtain permission from the rights-holder(s) directly, unless additional rights are indicated by a Creative Commons license in the record and/or on the work itself.

This Presentation has been accepted for inclusion in Library Faculty Presentations by an authorized administrator of Digital Scholarship@UNLV. For more information, please contact [digitalscholarship@unlv.edu](mailto:digitalscholarship@unlv.edu).

# AT HOME WITH ENGINEERING EDUCATION



*JUNE 22 - 26, 2020*

Asee's Virtual Conference

**#ASEEVC** 



# Improving access to standards

Susan Wainscott - Engineering Librarian &

Richard Zwiercan - Art, Architecture & Design Librarian

University of Nevada, Las Vegas

**ASEE'S VIRTUAL CONFERENCE**



#ASTEUC 



# Our framework for providing standards through the library

- Standards are useful for many projects, and many people.
- More library workers needed to know about standards.
- Cost effective and timely to even the playing field.





# Goals and Expectations

**In order to increase rate of request fulfilment we would:**

1. Build upon existing tools and workflows
2. Add an aggregator
3. Increase staff and patron outreach


## **Expectations**

1. After outreach to faculty, staff, and students
  - more use of the standards collection
  - more requests for standards
2. After add aggregator and outreach to Interlibrary Loan staff
  - increase in successful request fulfilment






Ordering Updates 2    Subscription Updates 0

 **Techstreet™ Enterprise**    HOME    LISTS    UPDATES

Search for a document...

### Subscription



---

#### Subscription Details

Your subscription contains documents from **12** publishers.

### Message Board

**TECHSTREET ENTERPRISE TRAINING:** ×

Whether you are new to Techstreet Enterprise or an experienced user in need of a refresher, Techstreet offers regular Enterprise training sessions, including a monthly training for administrators. Why not give it a try? Sign up here: [Techstreet Enterprise Training Sign Up](#)

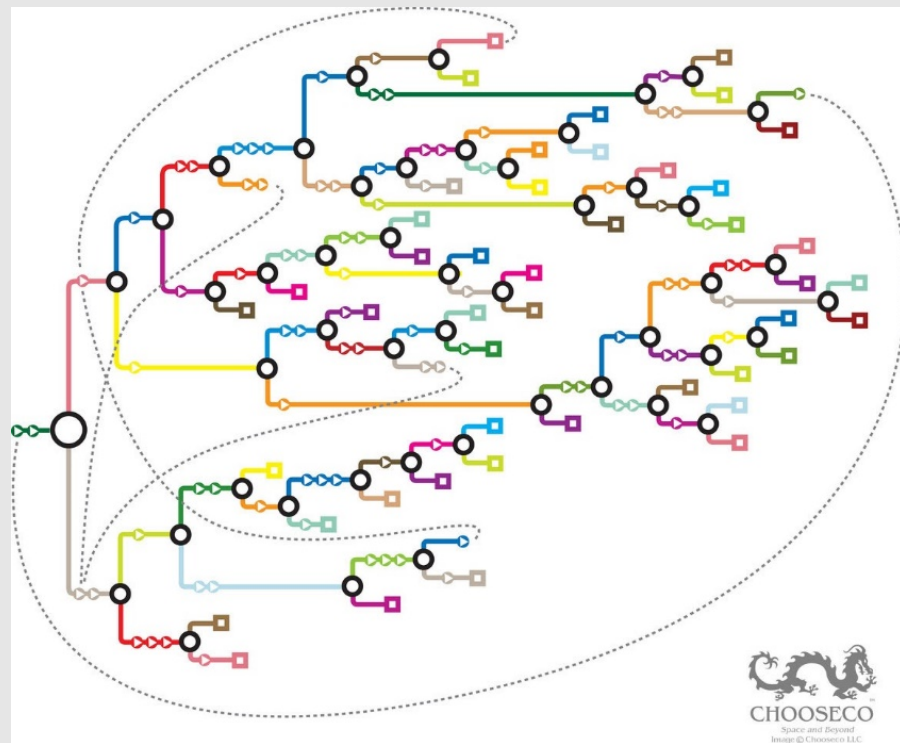
**Welcome to Techstreet Enterprise!**

Techstreet Enterprise is the most powerful platform on the market for accessing standards

We selected the Techstreet aggregator product, now part of the Clarivate product group.



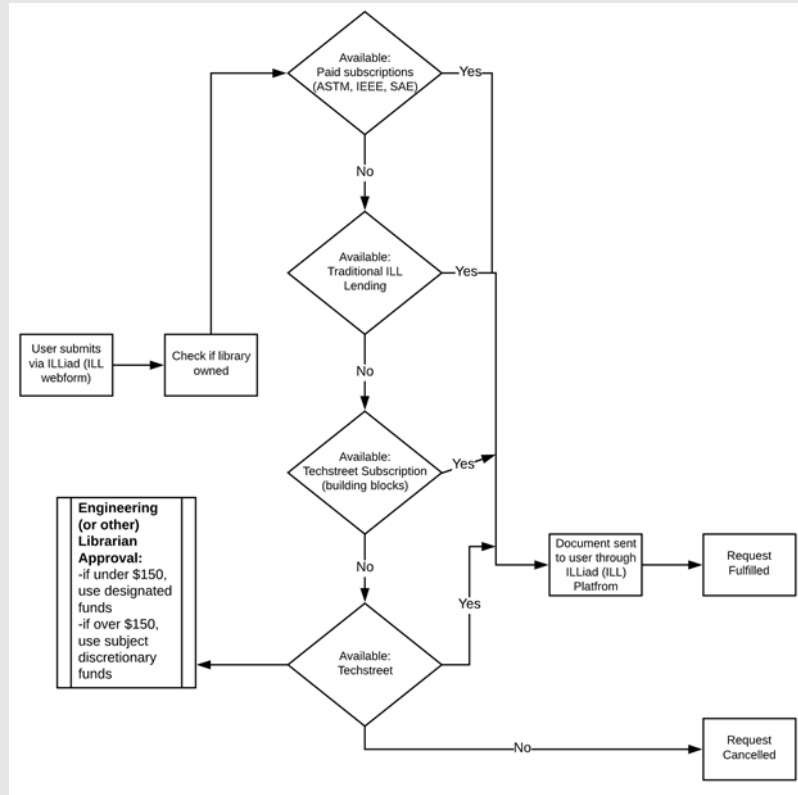
Our resulting set of workflows was like a *Choose your own adventure* story



<https://www.atlasobscura.com/articles/cyoa-choose-your-own-adventure-maps>

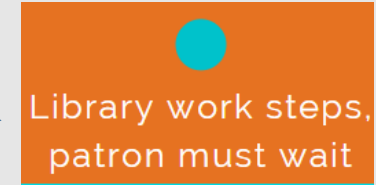
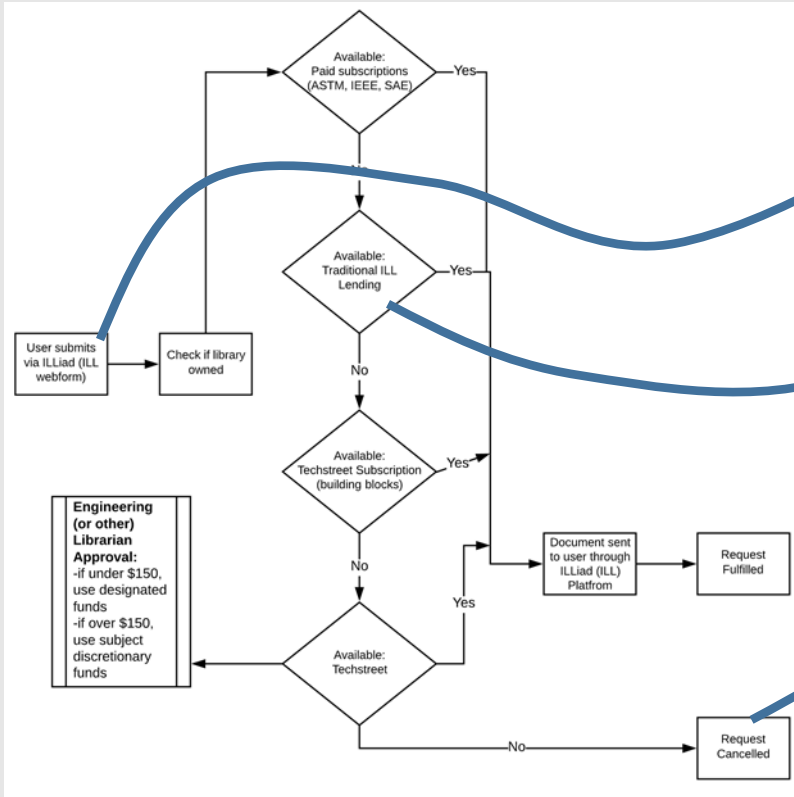


# Figure 1. Interlibrary loan request workflow





# Workflow symbols for choose your adventure



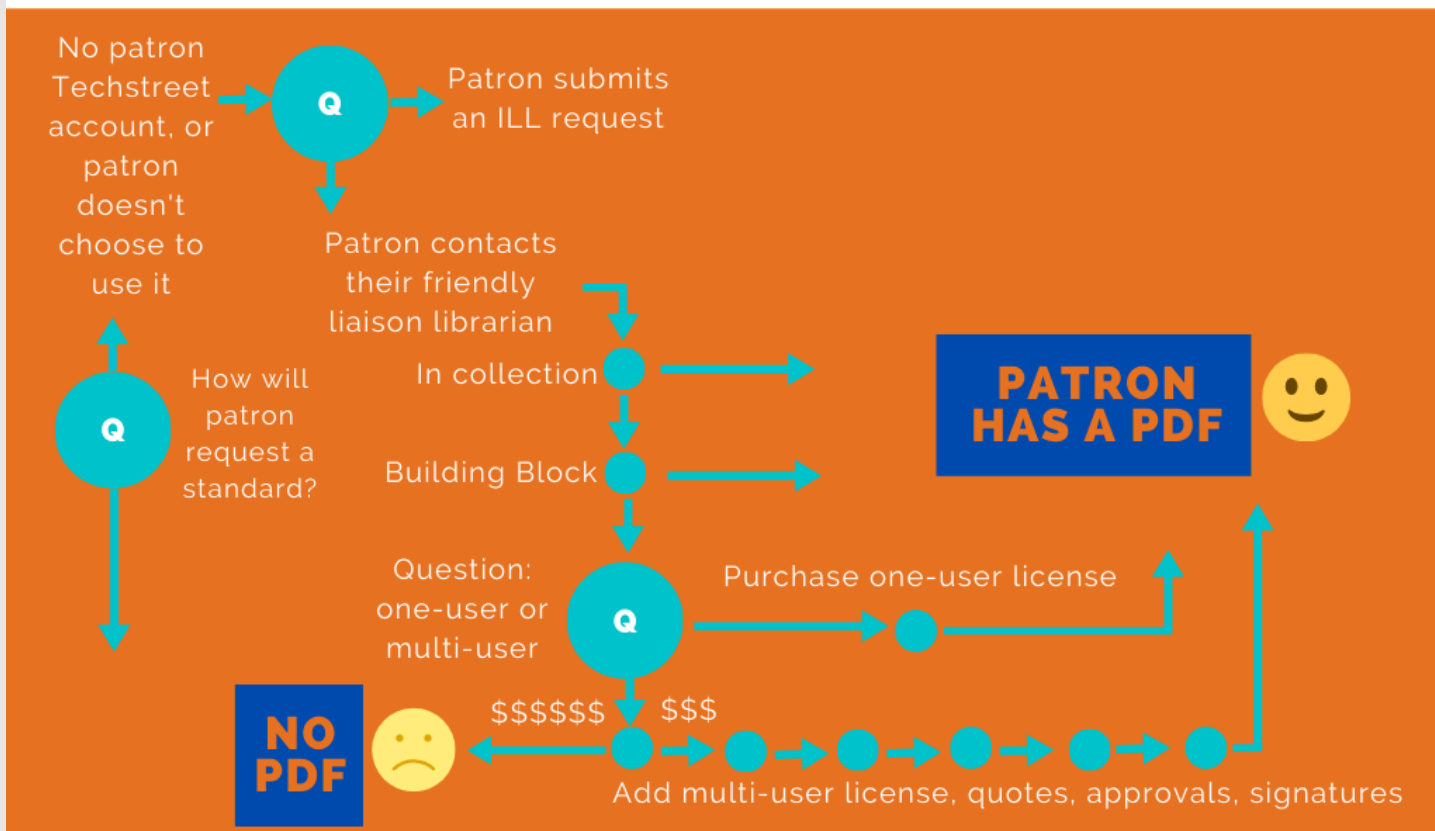
# INTERLIBRARY LOAN REQUEST

Patron uses any request template in our ILLIAD system



# CONTACT A LIBRARIAN REQUEST

Patron communicates with a library worker, often their liaison librarian



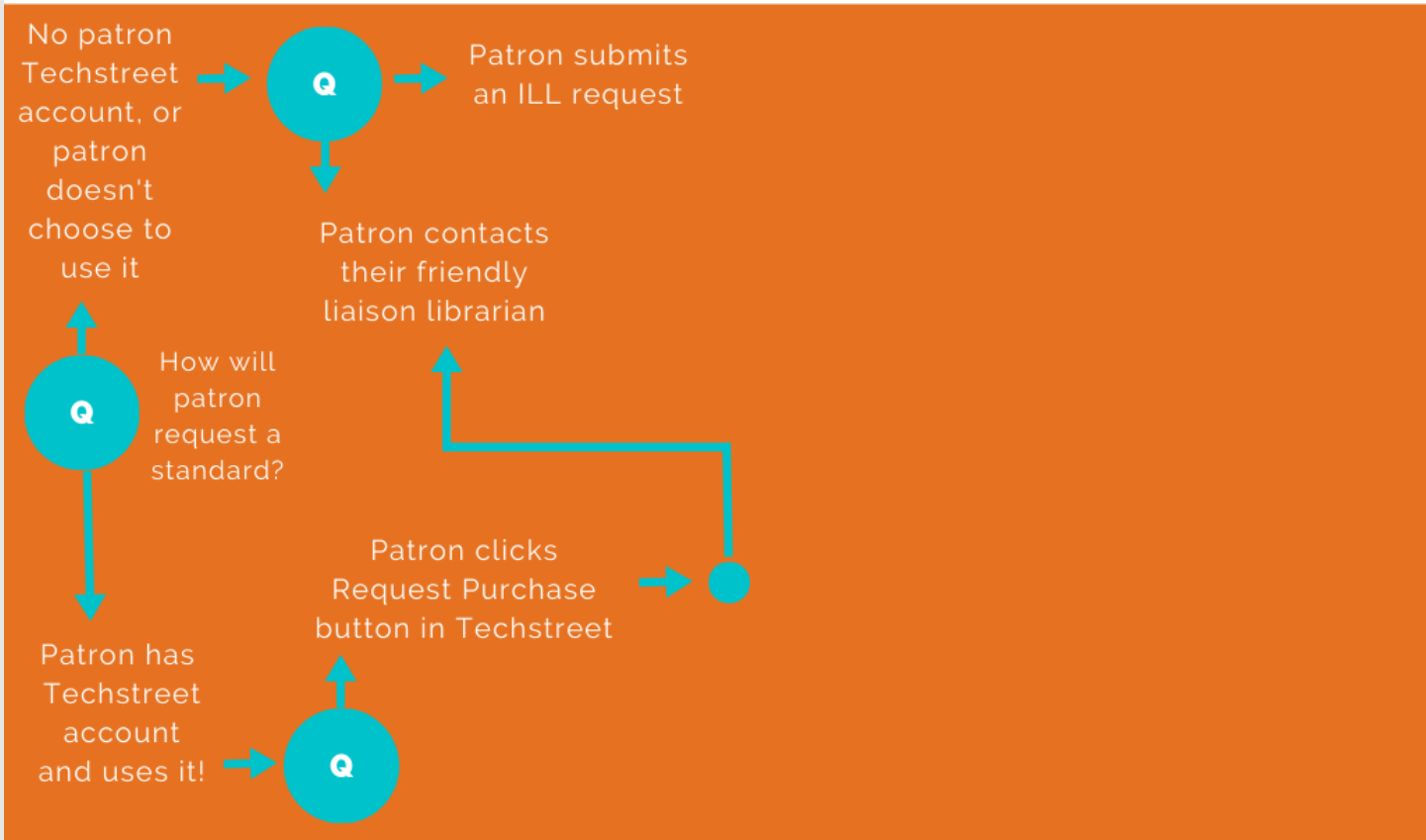
#ASTEUC



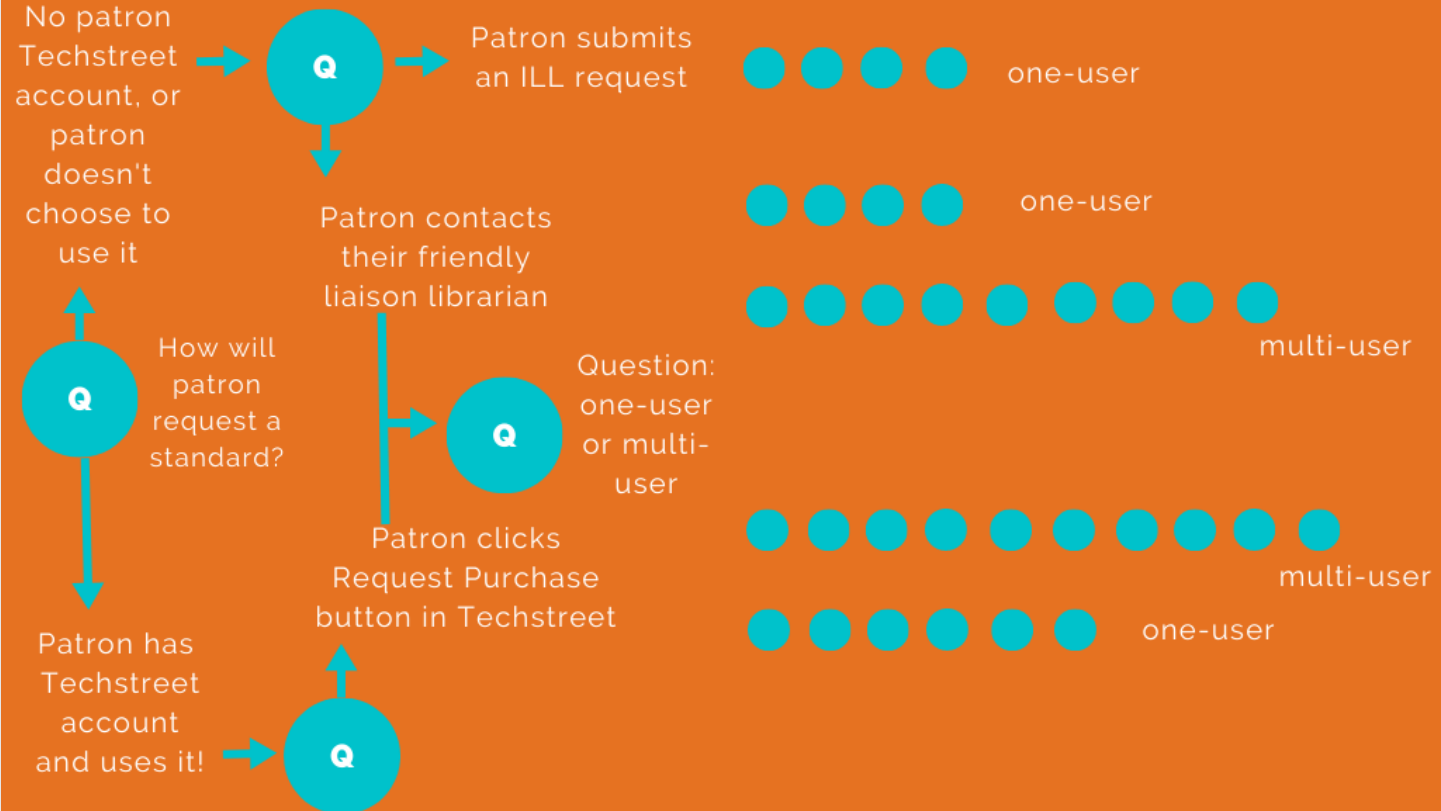


# TECHSTREET PURCHASE REQUEST

Patron has a Techstreet account and uses the Request Purchase button for a standard



# WORKFLOW COMPARISON





# Discovery: Can library workers and patrons locate what we already have?



Created by kiddo  
from Noun Project



# Table 1. Consolidated subscribed standards use data

<u>SDO</u>	<u>2015</u>	<u>2016</u>	<u>2017</u>	<u>2018</u>
IEEE (IEEE Xplore)	88	67	143	34
ASTM (ASTM Digital Library)	0	120	83	1268
ASTM	0	10	48	0
ACI	0	0	0	0
ISO	0	10	0	0
AWWA	0	0	0	2
ASHRAE	0	0	0	2
AASHTO	0	15	6	1
NFPA	0	0	0	1
DIN EN ISO	0	0	1	0
NEMA	0	0	3	0
BS EN	0	2	0	0
BS	0	2	0	0
ISO/TR	0	2	0	0





# Table 2. ILL fulfillment rate 2012-2018

<u>Year requested</u>	<u>Requests</u>	<u>Standards</u>	<u>Fulfilled or Found</u>
2012	12,161	7	2
2013	10,892	7	2
2014	9,154	7	3
2015	10,015	5	1
2016	8,803	18	12
2017	9,700	19	15
2018	8,892	12	5







# Conclusions and next steps

- Remove pre-paid tokens from workflows/outreach
- Interlibrary loan requests unless multi-user license needed
- Evaluate direct-from publisher for items used in courses
- Recommend single-item cataloging for all multi-user licensed items
- Support industry-wide standards metadata creation for discovery
- Continue outreach for patrons
- New round of outreach to library staff





# Thank you!

The authors thank:

- Our anonymous reviewers for very helpful comments and critiques.
- Our colleagues at UNLV Libraries, including the current lead for our interlibrary loan service, Yuko Shinozaki, and our head of continuing resources, Cory (James) Tucker.
- You, for watching our presentation.



#ASEEVC

# ASEE'S VIRTUAL CONFERENCE

*JUNE 22 - 26, 2020*

At Home with  
Engineering Education



## Live Q & A

Monday, 22 June 2020  
11:40 a.m. - 12:00 p.m. (EDT = GMT-4)

Thank you for your time!

Sue (Susan) Wainscott, [sue.wainscott@unlv.edu](mailto:sue.wainscott@unlv.edu)  
&  
Richard Zwiercan, [richard.zwiercan@unlv.edu](mailto:richard.zwiercan@unlv.edu)

