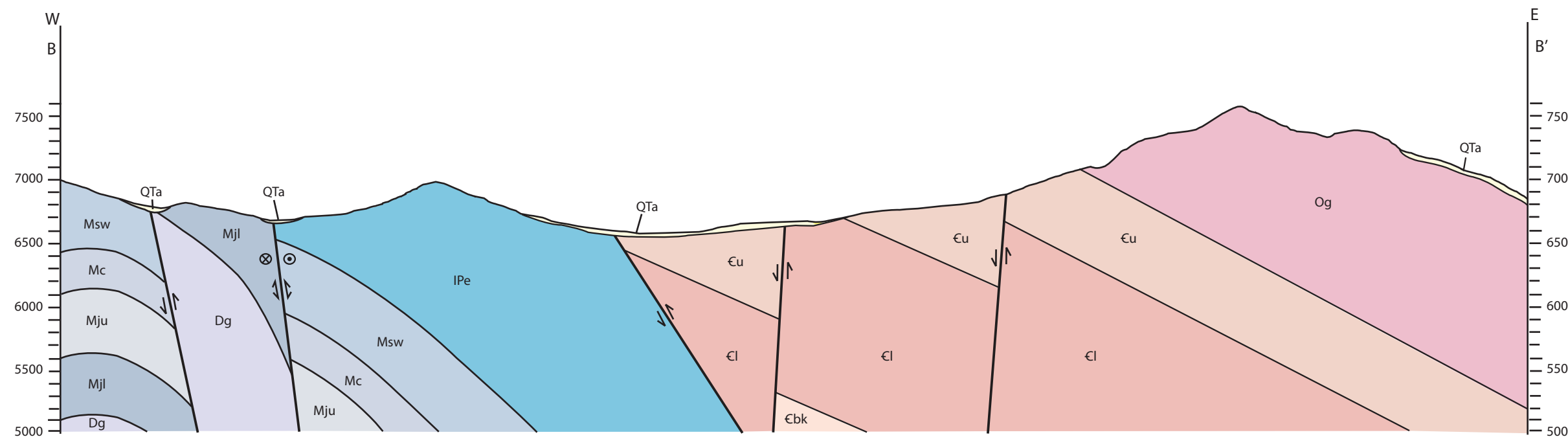
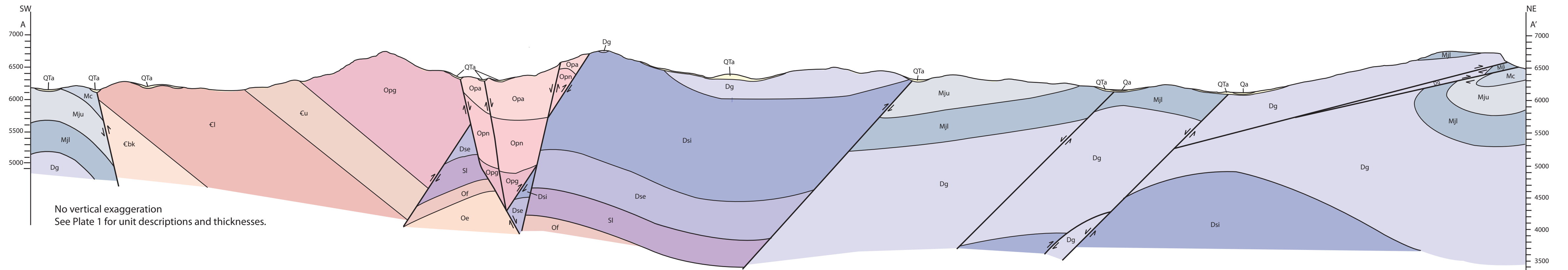


# Plate 2. Cross sections of the western Timpahute Range

Angela Russo (2013)



No vertical exaggeration  
See Plate 1 for unit descriptions and thicknesses.

### Symbols Key

- ↘ ↙ Reverse/thrust fault, arrows show direction of relative motion
- ⊗ ⊙ Right-lateral strike-slip fault, circle with 'x' moving away, circle with dot moving toward
- ↔ Reactivated fault
- ↘ ↗ Normal fault, arrows show direction of relative motion