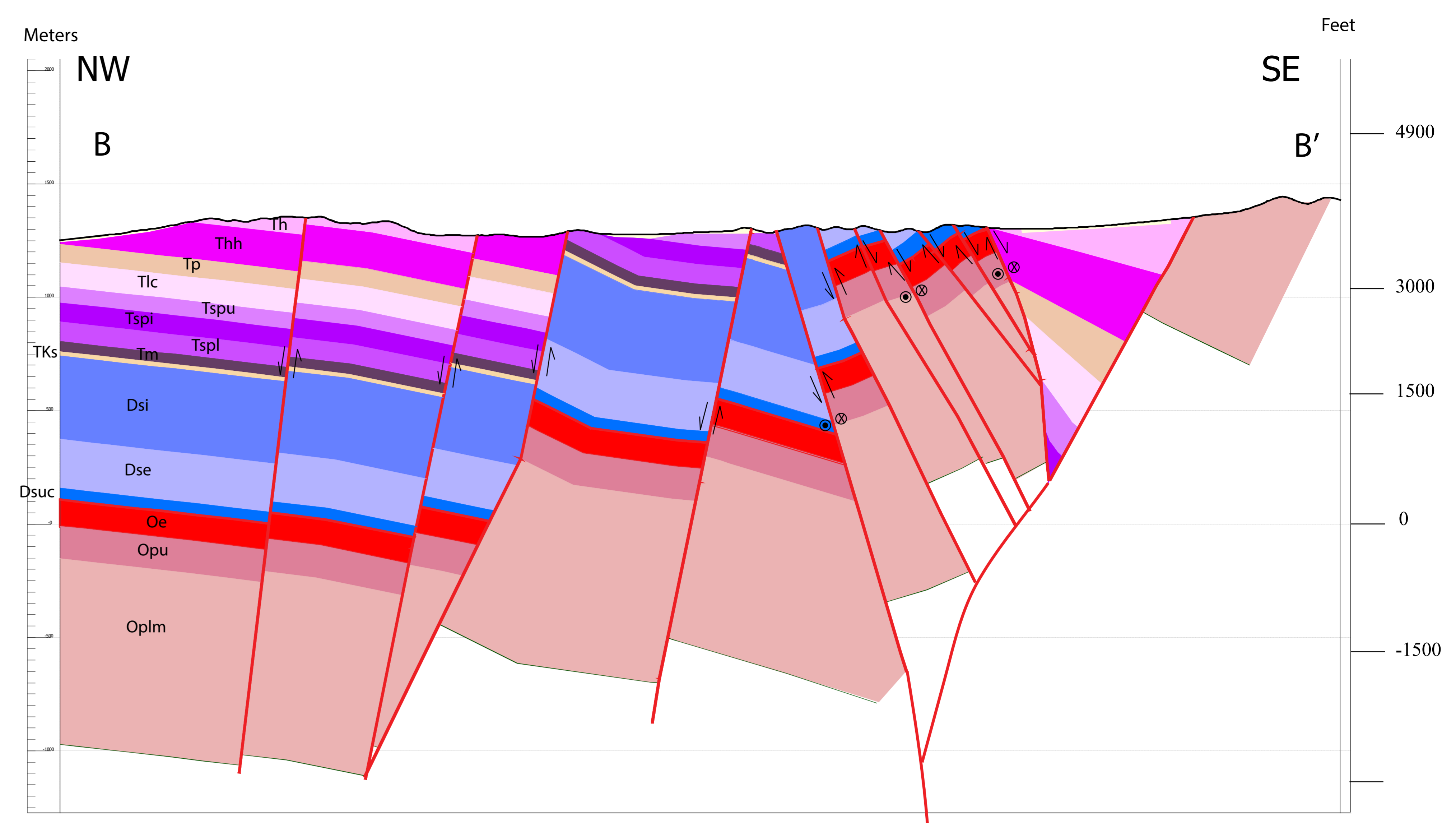
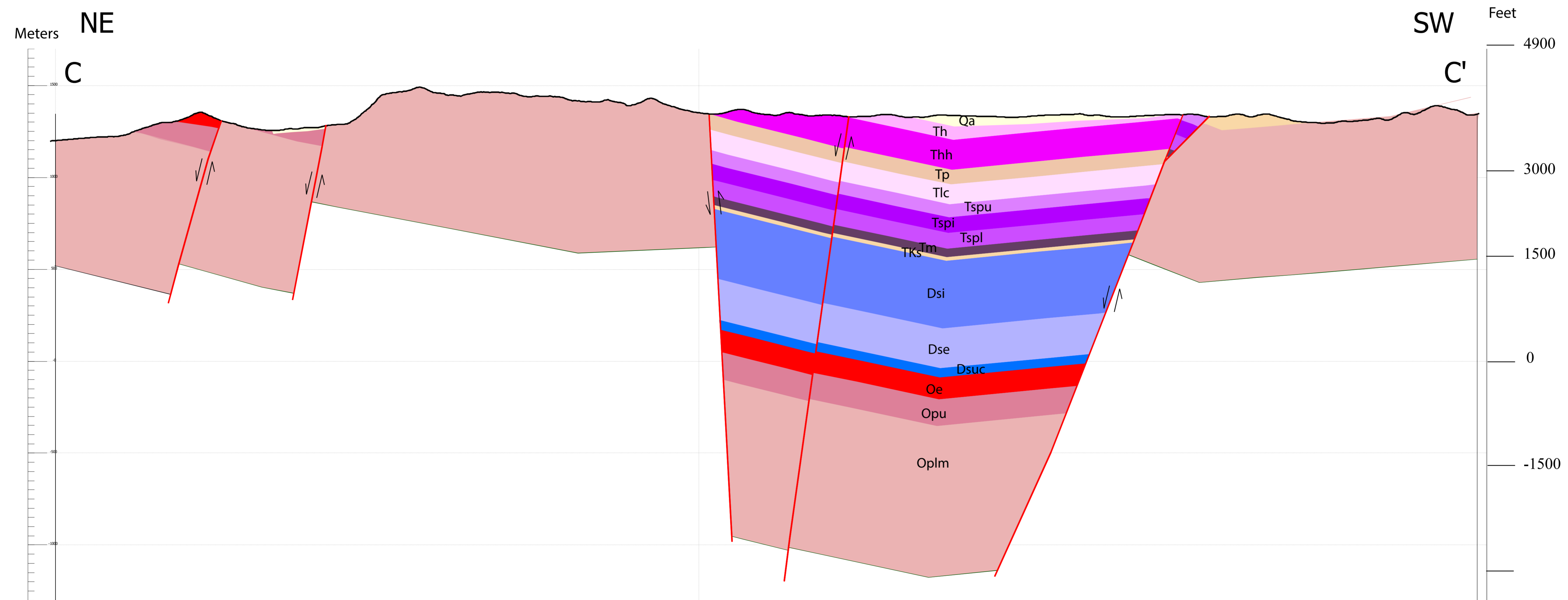


Scale 1:12000 No vertical exaggeration



Scale 1:12000 No vertical exaggeration



Scale 1:12000 No vertical exaggeration

Plate 2. Geologic cross-sections AA', BB', and CC'  
Refer to Plate 1 for section locations

Supplement to:

Muhammad, M. M., 2016, Structural evolution of the Maynard Lake Fault within the Pahrangat Shear Zone: University of Nevada Las Vegas, Nevada, USA, [M.S. thesis].