

1976

UNLV Lady Rebels 1976-1977

University of Nevada, Las Vegas

Follow this and additional works at: https://digitalscholarship.unlv.edu/basketball_programs



Part of the [American Popular Culture Commons](#), [Civic and Community Engagement Commons](#), and the [Sports Studies Commons](#)

Repository Citation

University of Nevada, Las Vegas (1976). UNLV Lady Rebels 1976-1977. 1-25.

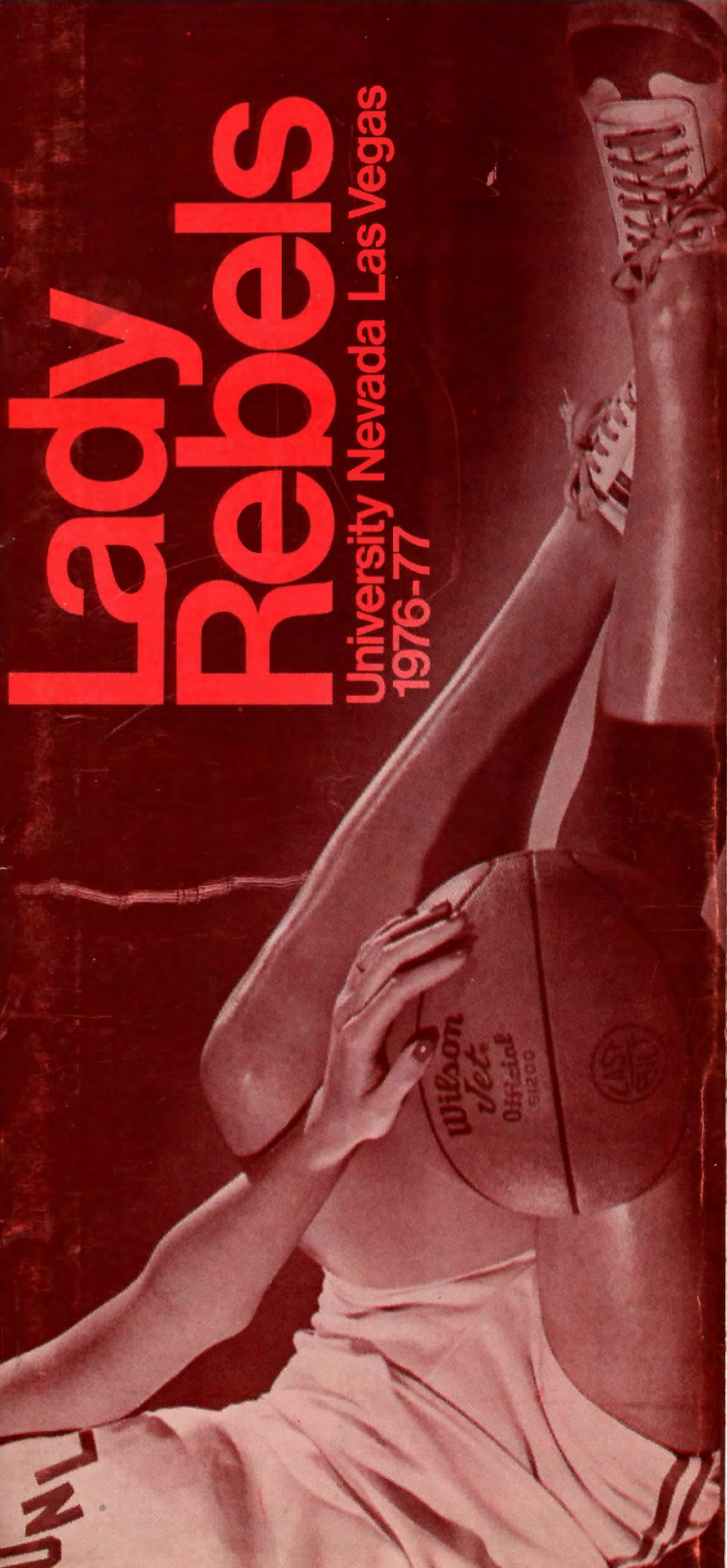
Available at: https://digitalscholarship.unlv.edu/basketball_programs/120

This Pamphlet is protected by copyright and/or related rights. It has been brought to you by Digital Scholarship@UNLV with permission from the rights-holder(s). You are free to use this Pamphlet in any way that is permitted by the copyright and related rights legislation that applies to your use. For other uses you need to obtain permission from the rights-holder(s) directly, unless additional rights are indicated by a Creative Commons license in the record and/or on the work itself.

This Pamphlet has been accepted for inclusion in UNLV Basketball Programs by an authorized administrator of Digital Scholarship@UNLV. For more information, please contact digitalscholarship@unlv.edu.

Lady Rebels

University Nevada Las Vegas
1976-77



University of Nevada, Las Vegas

Information

Address 4505 Maryland Parkway
Las Vegas, Nevada 89154
Telephone (702) 739-3011
President Dr. Donald Baepler
Chancellor Neil Humphrey
Chairman, Phys. Ed. Dept. John Bayer
Public Information Director Mark Hughes
Photographer John Goad
Enrollment 8,100
School Colors Scarlet and Gray
Nickname Rebels

Athletic Directory

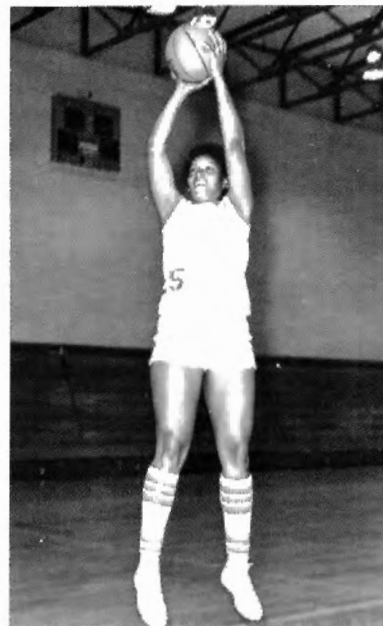
Athletic Director
Bill Ireland
(702) 739-3483
Assistant Athletic Director
Roger Barnson 739-3480
Sports Information Director
Dominic Clark 739-3207
Ticket Manager
Sherman Bennett 739-3678
Team Physician
Dr. Thomas Armour
Equipment Manager
Floyd Browning 739-3154
Head Trainer
J. Rodney Poindexter
739-3380
Head Football Coach
Tony Knap 739-3400
Assistant Football Coaches
Doug Carder 739-3466
Steve Buratto 739-3452
Tom Cruickshank 739-3466
Ron Smeltzer 739-3452
Roy Shivers 739-3456
Adam Rita 739-3456
Scott Schuhmann 739-3154
Doug Johnson 739-3154
Head Basketball Coach
Jerry Tarkanian 739-3295
Assistant Basketball Coach
Ralph Readout 739-3234
Women's Basketball Coach
Dan Ayala 739-3151

Head Baseball Coach
Fred Dallimore 739-3499
Assistant Baseball Coach
Jerry Goyeneche
739-3154
Track and Cross Country
Coach
Al McDaniels 739-3256
Golf Coach
Chub Drakulich 739-3289
Tennis Coach
Fred Albrecht 739-3621
Soccer Coach
Vince Hart 739-3483
Swimming Coach
George Mock 739-3636
Wrestling Coach
Dennis Finrock 739-3483
Football Secretary
Jinx Holmberg
Secretary to the Athletic
Director
Charlotte Summers
Department Secretary
Shirley Blackburn
Basketball Secretary
Carol Forsythe
Director of Fundraising
Dr. Wayne Pearson
739-3614
Coordinator, Booster
Activities
Davey Pearl 739-3614

University of Nevada, Las Vegas

1976-77 Lady Rebels

Compiled and edited by Sybel Alger
Sports Information Office



Debra Waddy

Contents

UNLV	2, 3
Dr. Donald Baepler, UNLV President	4
Bill Ireland, Athletic Director	5
Roger Barnson, Assistant Athletic Director	5
Dan Ayala, Head Coach	6
Matti Smith, Assistant Coach	7
1976-77 Outlook	8, 9
Tournament of Champions	10, 11
Roster	12, 13
Tournament Participants	14, 15
Player Profiles	16-19
Opponent Information	20, 21
Las Vegas	22, 23
1975-76 Rebels	24, 25
1976-77 Schedule	Back Cover

University of Nevada, Las Vegas

More than 9,000 students are currently attending the University of Nevada, Las Vegas, whose modern buildings and always changing landscape witness the fact that it is one of the fastest growing universities in the nation.

Founded in 1955 as Nevada Southern University, early classes met in the Las Vegas High School. Maude Frazier Hall, the campus' first building, was constructed in 1957 along a dirt road called Maryland Parkway. The first bachelor's degree were awarded in 1964 to 29 hardy students. Mushrooming growth and community interest brought autonomy as a full-fledged university in 1968 and the Nevada Board of Regents changed its name to the University of Nevada, Las Vegas on January 11, 1969.

Available to students are bachelor's degrees in 42 subjects and masters degree programs in 22 fields. The University also offers a six-year Specialist in Education Degree and a Doctor of Education Degree.

The 2,000 seat Artemus Ham Concert Hall opened this fall with a performance of the Tokoyo Symphony and will be a great cultural asset to the Las Vegas community.

The Paul McDermott Physical Education Center houses a myriad of facilities for UNLV students, including two gymnasiums, a 50-meter indoor swimming pool, handball courts, classrooms and special facilities for various sports.



Flora Dungan Humanities Building



James R. Dickinson Library



Training Room
McDermott Physical Education Center

UNLV President Dr. Donald Baepler

During his two years as president of UNLV, Dr. Donald H. Baepler has presided over and encouraged change and steady growth. Previous to his appointment in 1974, he had served as academic vice president for five years and twice filled the role of acting vice president.

A biologist by profession, Dr. Baepler constantly maintains an active participation in the sciences and teaches at least one class each semester in addition to his demanding administrative duties.

Ornithology is Dr. Baepler's special area of interest and he has traveled widely to conduct research and write about the birds in Alaska, the jungles of South America and nearly every part of the continental United States. His data has been utilized by such agencies as the National Audubon Society, the U.S. Fish and Wildlife Service and the National Science Foundation.

Dr. Baepler came to UNLV in 1968 from Central Washington State College in Ellensburg where he was dean of administration. He also served as chairman of the biology department and assistant to the president during his eight year tenure.

Dr. Baepler has served the Las Vegas community through his elected office in the Las Vegas Symphony Society and his leadership in the Governor's Manpower Conference. He has been an evaluator of grant proposals for the National Science Foundation and is a commission member of the Northwest Association of Secondary and Higher Schools. During the past year, he has been serving as the president of the Zoological Society of Nevada, the parent organization of the Las Vegas Valley Zoo.

Born in Edmonton, Canada, the 43-year-old administrator earned his graduate degrees at the University of Oklahoma and a bachelor's degree from Carleton College in Northfield, Minnesota.



Athletic Director Bill Ireland

UNLV Athletic Director Bill Ireland is an established fixture on the Nevada sports scene.

His association with the university began in 1968, when he was named head coach in the Rebels' first football season and led them to a 8-1 winning mark. They compiled an overall record of 26-23-1 in four seasons.

During his three years as athletic director, Ireland has made tremendous progress toward building UNLV into a major athletic contender in all facets of intercollegiate competition. He was instrumental in pushing for the Las Vegas Stadium, which opened in 1971, and has worked hard to get the community behind the Rebel football program.

Born in McGill, Nevada in 1927, Ireland was an outstanding athlete in the White Pine County schools. He served in the U.S. Navy during World War II after high school, and then entered the University of Nevada, Reno, where he competed in football and baseball. He stayed on as UNR's first graduate assistant, coaching three sports in two years.

In 1954, Ireland became one of the state's most successful coaches while at Fernley High School. Fernley won four state titles and nine conference crowns from 1954-58 and in 1956-57, Ireland's teams won the state titles in football, basketball and baseball. Following a two-year stint at South Tahoe High, Ireland returned to UNR in 1960, coaching freshman football and varsity baseball.

Assistant Athletic Director Roger Barnson

In his fourth year as assistant athletic director, Roger Barnson has distinguished himself as an administrator and business manager for UNLV's 15 intercollegiate sports. Barnson worked closely with Bill Ireland for five football seasons and moved up with him to the administration level in 1968.

Another native Nevadan, Barnson was born in Boulder City in 1938 and



earned All-State honors in football and baseball for three straight years at Boulder City High School. He attended Arizona State University on a baseball scholarship and became a regular starting pitcher for the legendary Bobby Winkles. He turned down several professional offers for a coaching career and returned to Las Vegas in 1961.

Barnson started as an assistant football and baseball coach at Western High School and moved on in 1965 to become head coach of the Clark High School Chargers when the school opened. He led Clark to a 17-8 total over three years, ending with an 8-1 record in 1967.



Head Coach Dan Ayala

In his first season as head coach of the Lady Rebels, Dan Ayala ably proved himself in the national arena of women's basketball.

The 1975-76 squad chalked up a 27-5 record and established Ayala's abilities to direct and motivate female athletes.

Ayala's concern for his girls is obvious, but more notable is their affection for him. They frequently congregate in his office, complaining about classes, joking about their love lives and generally reflecting the positive, enthusiastic attitude of their coach toward life and basketball.

Ayala came to UNLV after 12 years of successful coaching in the high school, junior college and collegiate ranks. He spent four years at Beaumont High School in California, compiling a 48-22 record, followed by a 57-18 total in three years at Mt. San Jacinto College. Ayala then amassed a 72-18 record at Pasadena City College and spent two years at Cal Poly, Pomona.

Ayala joined the Rebels in 1973 as an assistant to Jerry Tarkanian and scheduling coordinator; he was appointed head coach of the Lady Rebels in 1975.

The Ayala family welcomed a new member just prior to the start of the 1976-77 season and, appropriately enough, Christie Lyn (born October 30) is Dan and Linda's first girl. Their five boys are twins Brian and Steven (11), Randy (9), Daniel (7) and David (1).

Assistant Coach Matti Smith



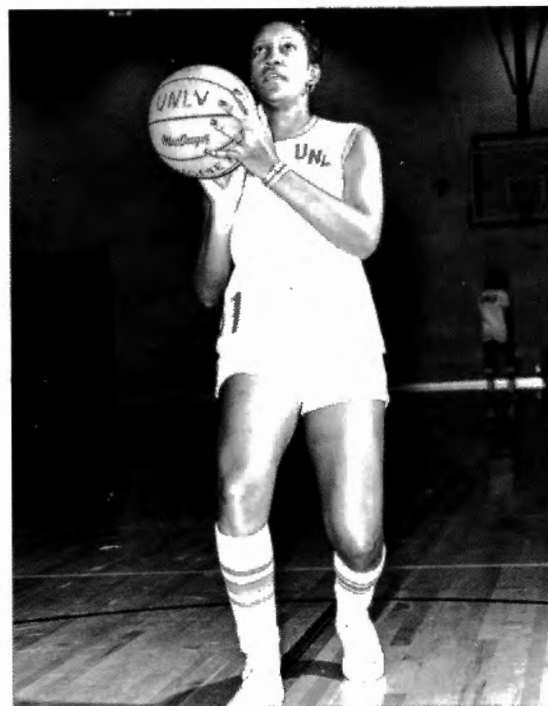
A successful local coach has joined the Lady Rebel staff this year.

Matti Smith came to UNLV from Basic High School in Henderson, where she has coached basketball, volleyball and softball for the past five years.

Under her tutelage, Basic's basketball teams placed in the top three yearly, including runner-up spots in 1971-72 and 1974-75, and captured the conference championship in 1973-74 with a 14-2 record.

Coach Smith was graduated from the University of Utah in 1965 with a bachelor's degree in physical education. She taught at Garside Junior High in Las Vegas for two years, then spent four years at Lakeside Junior High in Norwalk, California.

While at UNLV, Matti will complete her course work for a master's degree.



Liz Galloway

1976-77 Lady Rebels

Continuing The Runnin' Rebel Tradition

With five returning starters and several promising recruits, the UNLV Lady Rebels certainly have the potential to produce another winning season.

Sporting a fast break offense and high caliber defensive players, their extensive experience makes them top contenders in Head Coach Dan Ayala's second year.

Top returnee is senior Debra Waddy, a 5-10 center noted for her strength under the basket. She averaged 25.3 points per game and 9.1 rebounds in 1975-76 and had 10 games with 30 points or more, including a high game and team record of 42 points against Chico State.

This year's co-captains are 5-8 senior forward Liz Galloway and 5-10 forward Donna Wick. Galloway averaged 11.9 ppg and 9.7 rebounds last season; an excellent ballhandler, Wick averaged 10.0 ppg and 8.1 rebounds.

Top rebounder for the Lady Rebels is 6-1 senior Janice Fuller. She averaged 12.6 ppg and 13.9 rebounds with a high board game of 21 against the University of Utah. The final returning starter is Sheila Powell, a 5-3 sophomore from Rancho High in North Las Vegas. A superior backcourt defensive player, Sheila scored 9.7 ppg and 8.1 rebounds last year.

Newly recruited members on the squad include four from Seminole Junior College, which took first place in the National Junior College Tournament last season. Belinda Candler, a 6-1 center, was voted MVP in that tournament and averaged 24 points and 15 rebounds during the season. Sherry Hudlow, a 5-10 forward, scored 15 ppg and 12 rebounds. Cindy Perkins, a 5-11 forward, was named to the National JC All-Tournament team and averaged 15 ppg at Seminole. 5-8 guard Pam Parham earned All-American honors at Seminole with her 19.1 scoring average.

Rounding out Ayala's recruiting efforts, 2nd team All-American Diane Tillman has joined the Lady Rebels. A 5-9 forward, she comes from Temple Junior College, second in the nation last year. 5-9 Rhonda Penquite has transferred from Grand View JC and Anita Carter, the only freshman on the squad, has come to Las Vegas from Fresno, California.



1976-77 Lady Rebels — Front Row (l to r): Anita Carter, Rhonda Penquite, Co-Captain Donna Wick, Diane Tillman, Sheila Powell. Second Row: Pam Parham, Debra Waddy, Co-Captain Liz Galloway.

Sherry Hudlow. Back Row: Head Coach Dan Ayala, Belinda Candler, Janice Fuller, Cindy Perkins, Assistant Coach Matti Smith.

Las Vegas Junior League Tournament of Champions

The weekend of December 3 and 4 will be a major one for collegiate women's basketball. The Las Vegas Junior League and the University of Nevada, Las Vegas are co-sponsoring the first annual Tournament of Champions. With four of the top teams in the nation competing this year, the event was designed to be a yearly showcase of women's basketball talent.

Tournament games will be played in the 6,300-seat Las Vegas Convention Center. On Friday, December 3 Delta State will meet Long Beach at 6 p.m. and Immaculata will play UNLV at 8 p.m. The championship game will be played at 4 p.m. on Saturday, December 4 and the consolation match will be at 2 p.m.

Junior League

The Las Vegas Junior League has had a long and illustrious history of service in Southern Nevada since its establishment in 1946.

The League's involvement has touched nearly every facet of the Las Vegas community, young and old, people of every income group.

One of its biggest accomplishments was the completion of Fantasy Park and donation to the city. The League invested \$41,800 to develop six acres of city-owned land into a park for small children, which was the first of its kind in the state.

In more recent years, the Drug Abuse Conference and Southern Nevada Drug Abuse Council were co-sponsored by the Junior League. A "Suitcase Gallery" to bring art appreciation to the grade schools was initiated in 1972 and is still continuing.

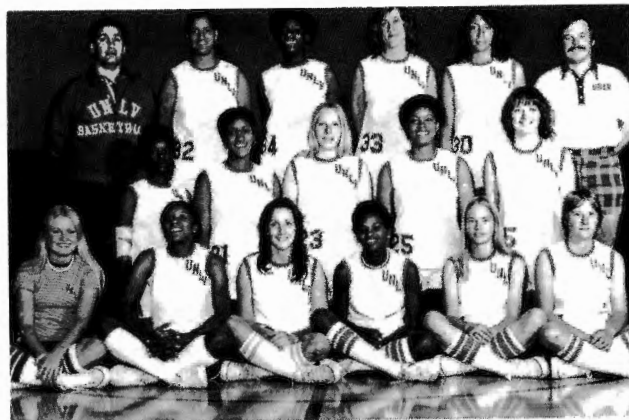
UNLV has been a large beneficiary of the League's efforts. Various musical instruments, library books and monetary assistance has helped the university continue its rapid growth.

Currently, the League's efforts are centered on work with children with learning disabilities.

Under the direction of President Jeanette Clark and Tournament Chairman Irene Schwartz, the Junior League is co-sponsoring the Tournament of Champions and doing much of the work necessary to make it a success.



(l to r) Junior League Vice President Sue Borns, UNLV Assistant Coach Matti Smith and Junior League Tournament Chairman Irene Schwartz



1975-76 Rebels — (l to r) Front row: Andrea Leibl (manager), Emma Jean Major, Clara Campsey, Renee Brown, Diane Fuller and Tona Lytle. Second row: Jackie Alford, Liz Galloway, Jill Adamson, Debra Waddy and Donna Wick. Back row: Head Coach Dan Ayala, Patti Montgomery, Connie Gooch, Lyn Gerhrke, Janice Fuller and Assistant Coach John Farrell.

Lady Rebels Rosters

ALPHABETICAL

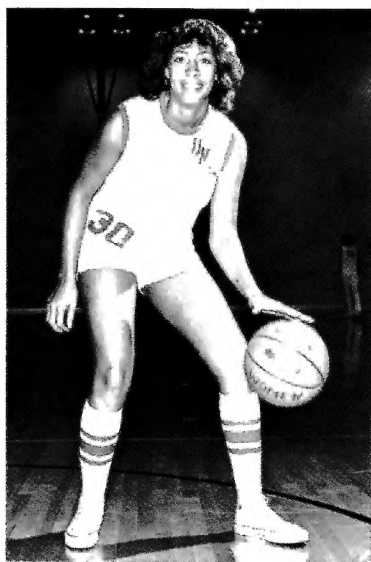
No.	Name	Pos	Hgt	Cl	Exp	Hometown
23	Belinda Candler	C	5-11	Jr	JC	Fort Towson, Oklahoma
11	Anita Carter	G	5-6	Fr	HS	Fresno, California
30	Janice Fuller	C	6-1	Sr	IV	Fort Towson, Oklahoma
31	Liz Galloway	F	5-8	Sr	IV	Rockdale, Texas
15	Sherry Hudlow	G-F	5-10	Jr	JC	McCloud, Oklahoma
12	Pam Parham	G	5-7	Jr	JC	Beggs, Oklahoma
24	Rhonda Penquite	F	5-10	Jr	JC	Ankeny, Iowa
22	Cindy Perkins	C-F	5-11	Jr	JC	Keota, Oklahoma
14	Sheila Powell	G	5-5	So	IV	Las Vegas, Nevada
33	Diane Tillman	F	5-8	Jr	JC	Cleveland, Texas
25	Debra Waddy	C-F	5-10	Sr	IV	Angleton, Texas
35	Donna Wick	G-F	5-10	Sr	IV	Morningsun, Iowa

NUMERICAL

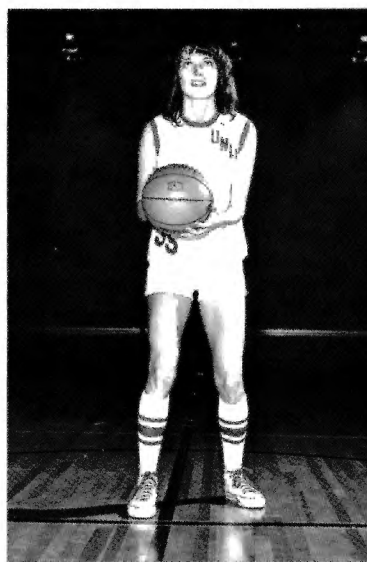
No.	Name	Pos
11	Anita Carter	G
12	Pam Parham	G
14	Sheila Powell	G
15	Sherry Hudlow	G-F
22	Cindy Perkins	C-F
23	Belinda Candler	C
24	Rhonda Penquite	F
25	Debra Waddy	C-F
30	Janice Fuller	C
31	Liz Galloway	F
33	Diane Tillman	F
35	Donna Wick	G-F

Head Coach: Dan Ayala

Assistant Coach: Matti Smith



Janice Fuller



Donna Wick

Delta State University

After only two years of intercollegiate competition, Delta State is a formidable basketball power. Coach Margaret Wade, frequently tabbed "the John Wooden of women's basketball," has directed the Lady Statesmen to a 77-3 cumulative record and she is returning with the same five starters who have been together since their first season.

Lucy Harris, 6-3 center, is the backbone of the Delta State team. A two-time All-American, she led the nation in scoring last year and was a starting center on the first U.S. Olympic women's basketball team, scoring the first basket in women's Olympic competition.

Also returning are 4-11 guard Debbie Brock, Romona Von Boeckman, a forward who holds the school record of 335 assists last year, 5-8 forward Cornelia Ward and captain Wanda Hairston.



Head Coach Margaret Wade, 6-3 Center Lucy Harris

Immaculata College



Mary Scharff
Co-Captain



Helen Canuso
Co-Captain

Immaculata College, a small women's Catholic school in southeastern Pennsylvania, has been a top contender since the early 70's. The Mighty Macs, led by 28-year-old coach Cathy Rush, won three consecutive national titles in 1972, 1973 and 1974, then were deposed by Delta State during their rise to the top. They placed second to Delta State again last year, losing 69-64 in the finals held at Penn State. The Mighty Macs wrapped up the season with a fine 25-3 tally and with many of their starters returning, should continue to be a factor in the national rankings.

Top returnees for the Macs are 5-8 guard-forward Mary Scharff, one of this year's co-captains, 5-10 Lorrie Gable, 5-7 co-captain Helen Canuso, 5-8 Maria Alonso and 6-1 Denise Burdick.

Long Beach State

Women's basketball was instituted at Long Beach in 1962 by Fran Schaafsma, who returns again this year for her fifteenth season as head coach. Though there are no seniors on the 49ers squad, an experienced crop of juniors and sophomores are returning from last year's 18-7 team, including 6-1 Monica Havelka and Barbara Mosher, both All-Americans who qualified for the final Olympic trials.

Player Profiles 1976-77



25

Debra Waddy, 5-10, SR, C-F — Top scorer on last year's 27-5 squad, Debra averaged 25.3 points per game and 9.1 rebounds, including a high game and team record of 42 points against Chico State. An excellent all-around offensive

player, her defense is continuing to improve and she is an outstanding candidate for All-American honors. She shot .517 (332-642) from the field and .645 (102-158) from the charity stripe. Debra will be looked on to provide much of the scoring punch this year. She transferred to UNLV last year from the Temple Junior College championship team. Major: Physical Education. Birthdate: 3/29/54.

30

Janice Fuller, 6-1, SR, C — Last year's top rebounder, Janice averaged 11.6 ppg and 13.9 rebounds with a high board game of 21 against the University of Utah. A fine defensive player, she also has a good outside shot which will be an asset to the team. Transferred from Seminole Junior College where she was an All-American in 1973. Janice shot .441 (170-385) from the field last year and had a .597 (52-87) free throw percentage. Birthdate: 2/26/54.



31

Liz Galloway, 5-8, SR, F — A starter again this year, Liz is a very fine defensive player with a tremendous anticipation of what the offensive team is trying to do. She plays excellent "help" defense and has an accurate set shot from the outside.

She averaged 11.9 points per game with a .414 (150-362) percentage from the field and .656 (44-67) at the charity stripe. Elected co-captain by her teammates, Liz will certainly help to propel them to a great season. Played on Temple's National Junior College championship team in 1974-75. Major: Sociology. Birthdate: 8/15/55.



35

Donna Wick, 5-10, SR, G-F — Elected co-captain of the 1976-77 team, Donna brings much experience to the Rebel squad. Noted for her good shooting and excellent defense, she is a very smart player and will be another

steadying influence in the defensive play this year. Donna averaged 10.0 ppg and 8.1 rebounds for UNLV last year. Was on the Temple Junior College championship team in 1974. Had a .410 percentage from the field (119-290) and .567 (72-127) in free throws. Birthdate: 7/3/55.

14

Sheila Powell, 5-5, SO, G — An extremely quick point guard and an excellent passer, Sheila is a superior backcourt defensive player and has all the makings of a super guard and a promising future at UNLV. From Rancho High School in North Las Vegas, she scored 9.7 ppg and 8.1 rebounds last season. Sheila netted 5.6 assists per game and rounds out the Rebel starting five. She was twice named MVP by her coaches and was twice named to the all-conference team in high school. Major: Physical Education. Birthdate: 9/23/57.



23

Belinda Candler, 5-11, JR, C — An All-American center from Seminole Junior College, Belinda was voted Most Valuable Player in the national JC tournament last year. She averaged 24 ppg and 15 rebounds for Seminole. Is a very strong and

smart offensive player who will also contribute defensively. Big things are expected of Belinda at UNLV. Birthdate: 3/27/56.



33

Diane Tillman, 5-8, JR, F — A transfer from Temple Junior College, Diane was named 2nd team All-American. She was the leader of the Temple team which placed second in the nation last year. An outstanding shooter with great range, Diane is quick and if she learns defense the Rebel way, she will be a contributing member of the 1976-77 squad. Major: Physical Education. Birthdate: 2/14/56.



15

Sherry Hudlow, 5-10, JR, G-F — Another transfer from Seminole JC, Sherry averaged 15 ppg and 12 rebounds there. A physically talented young lady, she is quick, can jump and is expected to play top-notch defense. She will play



inside at one of the post spots and also as a point guard backing up Sheila Powell. Major: Physical Education. Birthdate: 11/12/55.

12

Pam Parham, 5-7, JR, G — An All-American from Seminole JC, Pam will play the wing for UNLV and should see a lot of action. Her excellent passing compliments her outside shooting abilities; Pam will be a very enjoyable player to watch and will surprise many with her shooting range. Averaged 19.1 ppg for Seminole. Major: Physical Education. Birthdate: 2/20/56.



24

Rhonda Penquite, 5-10, JR, F — An outstanding offensive player from Grand View Junior College, Rhonda has the capabilities and is improving her techniques to play defense. She is another excellent passer and had a high scoring percentage at Grand



View. Is expected to fit right into the Rebel running

game and will see a lot of action this year. Major: Recreation. Birthdate: 10/9/56.

22

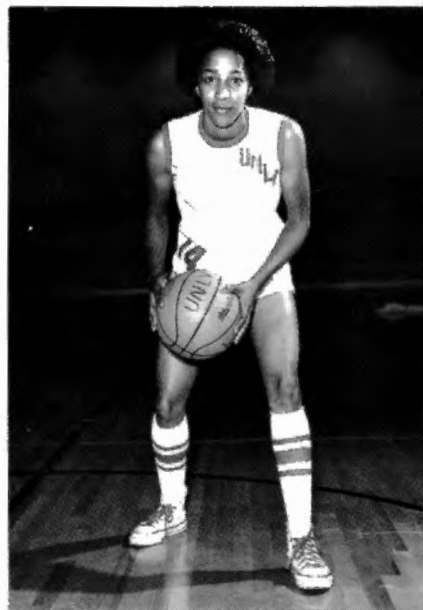
Cindy Perkins, 5-11, JR, C-F — A top member of the Seminole team, Cindy will play the post and can also play the wing. She has a fine outside shot and with continued defensive improvement, will be pushing for a starting spot. She averaged 15 points per game and made the National JC All-Tournament team. Major: Physical Education. Birthdate: 5/24/56.



11



Anita Carter, 5-6, FR, G — The only freshman on the 1976-77 squad, Anita had an outstanding high school career at Hoover High in Fresno, California. She is learning the fast break game and improving her defense. Anita will be a contributing member before her four years are up. Major: Journalism. Birthdate: 5/28/58.



Sheila Powell

Opponent Information

DELTA STATE

December 3 and 4: Las Vegas
Tournament of Champions
Head Coach: Margaret Wade
SID: Langston Rogers
Nickname: Lady Statesmen
Enrollment: 4,000
Colors: Green, White

IMMACULATA COLLEGE

December 3 and 4: Las Vegas
Tournament of Champions
Head Coach: Cathy Rush
SID: Doris Del Tosto
Enrollment: 600
Nickname: Mighty Macs
Colors: Blue, White

LONG BEACH STATE

December 3 and 4: Las Vegas
Tournament of Champions
Head Coach: Fran Schaafsma
Nickname: 49ers
Enrollment: 31,000
Colors: Brown, Gold

UTAH STATE UNIVERSITY

December 9: Las Vegas
Head Coach: Marilyn Weiss
SID: Craig Hislop
Nickname: Aggies
Enrollment: 8,500
Colors: Navy Blue, White

U.C., SANTA BARBARA

December 10: Las Vegas
Head Coach: Bobbi Bonace
SID: Stan Duke
Nickname: Gauchos
Enrollment: 15,000
Colors: Blue, Gold

KANSAS STATE UNIVERSITY

December 17: Manhattan, Kansas
Head Coach: Judy Akers
SID: Jane Habiger
Nickname: Wildkittens
Enrollment: 17,000
Colors: Purple, White

PEPPERDINE UNIVERSITY

January 4: Las Vegas
Head Coach: Patti Myers
Nickname: Waves
Enrollment: 2,000
Colors: Blue, Orange

U.C., FULLERTON

January 6 and 7: Provo, Utah
Cougar Classic
Head Coach: Billie Moore
SID: John Culwell
Nickname: Titans
Enrollment: 13,000
Colors: Blue, White, Orange

BRIGHAM YOUNG UNIVERSITY

January 6 and 7: Provo, Utah
Cougar Classic
Head Coach: Elaine Michaelis
SID: Betty Vickers
Nickname: Cougars
Enrollment: 25,000
Colors: Blue, White

OKLAHOMA STATE UNIVERSITY

January 13: Las Vegas
Head Coach: Brenda Johnson
Enrollment: 18,000
Colors: Black, Burnt Orange

UNIVERSITY NEBRASKA, LINCOLN

January 15: Las Vegas
Head Coach: Jan Callahan
SID: June Davis
Nickname: Huskers
Colors: Red, White

WEBER STATE COLLEGE

February 4: Las Vegas
Head Coach: Joy Miner
Nickname: Wildcats
Enrollment: 9,000
Colors: Purple, White

WEST TEXAS STATE UNIVERSITY

February 18: Albuquerque
Head Coach: Eileen Stovall
Colors: Maroon, White

SAN DIEGO STATE UNIVERSITY

February 26: San Diego
Head Coach: Kathleen Wallace
Enrollment: 32,000
Colors: Red, Black

Las Vegas

The Southern Nevada area continues to grow as more than 350,000 people now call Las Vegas their home. New residents are attracted to the area by its climate, economy and recreation, with nearby Lake Mead and Lee Canyon Ski Resort providing the year-round outdoor recreation.

The Lady Rebels play some of their home games at the Las Vegas Convention Center, which has installed a new hardwood court, one of the finest in the country. The Center's rotunda seats 6,257 in comfortable, cushioned chairs, all with an unobstructed view of the action.



Downtown Las Vegas



Artemus Ham Hall



Judy Bayley Theatre



Convention Center



Student Union

Rebel Report

Final 1975-76 Game Results

Record: W 27 L 5
(Home 14-0, Away 9-1, Neutral 3-5)

UNLV	OPPONENT	OPP	LEADING SCORER	LEADING REBOUNDER
108	No. Arizona U.	20	Waddy, Fuller-13	Montgomery, Wick-8
102	No. Colorado U.*	48	Waddy, Fuller-16	J. Fuller-16
72	U. of Utah*	61	Waddy-32	Waddy-16
104	Utah State U.	55	Waddy-23	J. Fuller-10
95	U. of Mexico	59	Waddy-17	J. Fuller, Galloway-12
111	Weber State U.	70	Waddy-32	J. Fuller-18
103	U. of Hawaii#	49	Montgomery-23	Gooch-15
83	Chico State#	73	Waddy-42	J. Fuller-15
75	Long Beach State#	83	Waddy-25	Waddy-13
121	U. of Colorado	48	Waddy-22	J. Fuller-16
87	No. Colorado U.	53	Waddy-22	J. Fuller-13
119	Skagit Valley C.C.	26	Waddy-26	J. Fuller-12
95	Skagit Valley C.C.	38	Gehrke-20	Montgomery-17
82	U. of So. California	53	Waddy-32	J. Fuller-16
80	U.C., Los Angeles	84	Waddy-26	J. Fuller-16
116	So. Utah State U.	36	Waddy-17	Gehrke-18
72	U. of Utah	65	Waddy-34	J. Fuller-21
82	Arizona State U.	28	Waddy-24	J. Fuller-16
117	U. of Arizona	51	Waddy-30	J. Fuller-15
88	U. of Nevada, Reno	51	Waddy-33	J. Fuller-18
84	Utah State U.	52	Waddy-20	J. Fuller-18
107	B.Y.U. of Hawaii	16	Gehrke-22	J. Fuller-15
96	U. of Hawaii	30	Waddy-24	J. Fuller-15
82	U. of So. California	53	Waddy-20	J. Fuller-20
99	U. of Kansas	84	Waddy-34	Galloway-12
116	U.C., Santa Barbara	58	Wick-24	Wick-14
85	Chico State‡	61	Waddy-30	J. Fuller-18
60	Fullerton State‡	67	Waddy-21	J. Fuller-18
77	U.C., Los Angeles‡	97	Waddy-21	J. Fuller-16
87	Indiana State+	75	Waddy-30	J. Fuller-14
55	Wayland Baptist+	68	Waddy-25	J. Fuller, Galloway-6
81	Belmont+	68	Waddy-35	J. Fuller-9

*Utah Holiday Classic
#Chico State Tournament
‡AIW Regionals
+NWIT Playoffs

1975-76 Individual Statistics

PLAYER	G	FGM-FGA	PCT	FTM-FTA	PCT	REB	AVE	PF-FO	TP	AVE	A
Debra Waddy	30	332-642	.517	102-158	.645	273	9.1	83-1	766	25.3	9
Janice Fuller	31	170-385	.441	52-87	.597	431	13.9	72-5	392	12.6	33
Liz Galloway	29	150-362	.414	44-67	.656	281	9.7	82-3	344	11.9	78
Donna Wick	31	119-290	.410	72-127	.567	252	8.1	75-4	310	10.0	90
Sheila Powell	31	137-339	.404	27-54	.500	89	2.9	90-3	301	9.7	174
Lyn Gehrke	24	52-123	.423	32-64	.500	135	5.6	26-2	136	5.6	6
Connie Gooch	14	36-77	.467	17-38	.447	93	6.6	28-0	89	6.3	1
Patti Montgomery	25	58-135	.430	35-55	.636	162	6.5	40-1	151	6.0	8
Jackie Alford	29	59-163	.362	15-28	.536	61	2.1	36-0	133	4.6	60
Emma Jean Major	12	21-55	.382	12-29	.414	43	3.6	19-1	54	4.5	8
Jill Adamson	20	30-70	.428	11-16	.687	103	5.1	25-0	71	3.5	10
Diane Fuller	22	32-95	.337	5-15	.333	42	1.9	17-0	69	3.1	13
Renee Brown	21	23-92	.250	6-13	.461	49	2.3	25-0	52	2.5	29
Roxi Bratcher	22	24-65	.369	0-0	---	30	1.4	28-0	48	2.2	57
Tona Lytle	14	9-41	.219	3-8	.375	11	.8	6-0	21	1.5	13
Clara Campsey	6	2-10	.200	0-1	.000	2	.3	9-0	4	.6	12
Bev Rambicure	4	0-4	.000	0-0	---	7	1.7	1-0	0	---	2
(Team Rebounds)						173					
UNLV	32	1254-2948	.425	433-760	.570	2237	69.9	662-20	2941	91.9	603
Opponents	32	707-2040	.346	366-644	.568	1395	43.6	654-30	1780	55.6	358

University of Nevada, Las Vegas

Lady Rebels 1976-77 Schedule

Date	Opponent	Time
Nov. 28,29	Univ. of Mexico	7:30
Dec. 3	TOURNAMENT OF CHAMPIONS	
	Delta St. vs Long Beach	6:00
	UNLV vs Immaculata	8:00
Dec. 4	Consolation Game	2:00
	Championship Game	4:00
Dec. 9	Utah State	7:30
Dec. 10	U.C., Santa Barbara	7:30
Dec. 11	Utah St. vs UCSB	2:00
Dec. 17	Kansas State	7:00
Jan. 4	Pepperdine Univ.	7:30
Jan. 6,7	Cougar Classic	TBA
Jan. 13	Oklahoma State	7:30
Jan. 14	Oklahoma State	7:30
Jan. 15	Univ. of Nebraska	7:30
Jan. 18-20	U. of Mexico Classic	TBA
Jan. 24,25	Mexico National Tournament	TBA
Feb. 4	Weber State	7:30
Feb. 10-12	Houston Classic	TBA
Feb. 18	West Texas State	7:00
Feb. 19	U. of New Mexico	7:00
Feb. 25	Arizona State	7:00
Feb. 26	San Diego State	7:00
Mar. 10-12	AIAW Regional Tournament	TBA
Mar. 17-19	National Women's Invitational	TBA
Mar. 24-26	AIAW National Championships	TBA

Convention Center.
Home games in Red.