

1978

UNLV Lady Rebels 1978-1979

University of Nevada, Las Vegas

Follow this and additional works at: https://digitalscholarship.unlv.edu/basketball_programs



Part of the [American Popular Culture Commons](#), [Civic and Community Engagement Commons](#), and the [Sports Studies Commons](#)

Repository Citation

University of Nevada, Las Vegas (1978). UNLV Lady Rebels 1978-1979. 1-49.

Available at: https://digitalscholarship.unlv.edu/basketball_programs/122

This Pamphlet is protected by copyright and/or related rights. It has been brought to you by Digital Scholarship@UNLV with permission from the rights-holder(s). You are free to use this Pamphlet in any way that is permitted by the copyright and related rights legislation that applies to your use. For other uses you need to obtain permission from the rights-holder(s) directly, unless additional rights are indicated by a Creative Commons license in the record and/or on the work itself.

This Pamphlet has been accepted for inclusion in UNLV Basketball Programs by an authorized administrator of Digital Scholarship@UNLV. For more information, please contact digitalscholarship@unlv.edu.

1978-79 Lady Rebel Basketball



University of Nevada, Las Vegas

UNIVERSITY OF NEVADA, LAS VEGAS MEDIA OUTLETS

NEWSPAPERS

Joe Burchick, Sports Desk
Mike Henle, Sports Desk
Tom Dye, Sports Desk
Royce Feour, Sports Desk
Las Vegas REVIEW JOURNAL
1111 W. Bonanza
Las Vegas, NV 89106
(702) 385-4241

Bill Guthrie, Sports Editor
Jim Hunter, Sports Desk
Charlotte Darr, Sports Desk
Las Vegas SUN
121 Highland Avenue
Las Vegas, NV 89106
(702) 385-3111

Len Colby, Sports Editor
VALLEY TIMES
1007 E. Cheyenne
North Las Vegas, NV 89030
(702) 642-2567

WIRE SERVICES

Pat Arnold
Associated Press
R-J Building
1111 W. Bonanza
Las Vegas, NV 89106
(702) 382-7440

Myram Borders
United Press International
Las Vegas SUN Building
121 Highland Avenue
Las Vegas, NV 89106
(702) 384-4915

CAMPUS

Dominic Clark, SID
Linda Lehman, Asst. SID
University of Nevada, Las Vegas
4505 Maryland Parkway
Las Vegas, NV 89154
(702) 739-3207

Dennis Berry, Sports Editor
The YELL
University of Nevada, Las Vegas
4505 Maryland Parkway
Las Vegas, NV 89154
(702) 739-3478

TELEVISION

Ron Vitto, Sports Director
KLAS-TV Channel 8
Las Vegas, NV 89109
(702) 735-9162

George Maupin, Sports Director
KSHO-TV Channel 13
Las Vegas, NV 89102
(702) 876-6798

Dick Gregg, Sports Director
KORK-TV Channel 3
Las Vegas, NV 89121
(702) 451-4224

RADIO

Rory Markus
Sports Director, KLAV Radio
2634 State Street
Las Vegas, NV 89109
(702) 732-2555

Rick Denton
Sports Director, KMJJ Radio
P.O. Box 14805
Las Vegas, NV 89114
(702) 739-9383

Jack Abell
Sports Director, KBMI Radio
1550 E. Flamingo Road
Las Vegas, NV 89109
(702) 732-7753

Tony Brown
KENO Radio
4660 S. Decatur
Las Vegas, NV 89103
(702) 876-1460

Gary Campbell
Sports Director, KRAM Radio
925 Desert Inn Road
Las Vegas, NV 89109
(702) 732-1363

Bill Buckmaster
KORK Radio
1950 Sandhill Road
Las Vegas, NV 89104
(702) 457-1419

Mal Harris
KDWN Radio
1 Main Street
Las Vegas, NV 89101
(702) 385-7212

Cy Newman
KVOV Radio
Box 400
Henderson, NV 89015
(702) 564-2591

Roger Baddish
KNUU Radio
3320 Las Vegas Blvd. South
Las Vegas, NV 89109
(702) 735-8644

Moe Madden
KXTZ Radio
307 Water Street
Henderson, NV 89015
(702) 564-2696

Table of Contents

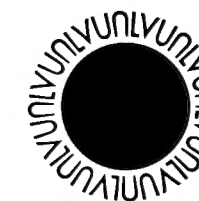
All-Americas	40
Belinda Candler	41
Janie Fincher	6
Athletic Director, Bill Ireland	7
Assistant Athletic Director, Roger Barnson	2
Athletic Staff	2
Behind the Scenes	Inside Back Cover
General Information	2
Head Coach, Dan Ayala	8
Assistant Coach, Donna Wick	9
Lady Rebels in the Pros	48
Last Year's Results	26
Las Vegas — the City	3
Media	Inside Front Cover
NIKE Tournament of Champions	28 and 29
Opponents	30-38
Outlook	10
Past Records	42-47
Player Profiles	
Aldarondo, Yatska	16
Calloway, Kathie	17
Carter, Anita	12
Glover, Tina	18
Hamilton, Sandra	19
Mello, Liz	20
Odnoha, Paula	13
Perkins, Ida	21
Purdy, Shelly	22
Reed, Kelli	23
Welch, Cathy	24
Willis, Teresa	14
Schedule	Back Cover
Team Picture and Roster	25
University Acting President, Dr. Brock Dixon	6
University Profile	4 and 5
Women's Sports Information Director, Linda Lehman	9
Women's Trainer, Jeannie Powers	9

Compiled, Written and Edited
by
Linda L. Lehman
Assistant Sports Information Director

CREDITS
Tom Jones, IV
University Photographer
Mark Hughes
University Information Director
Tom Martin
Las Vegas News Bureau

The Desert Inn and Country Club

On the Cover: Paula Odnoha, Teresa Willis and Anita Carter enjoy a moment near the waterfall at the Desert Inn and Country Club on the Las Vegas Strip.



University of Nevada, Las Vegas

ATHLETIC STAFF

Athletic Director
Bill Ireland, (702) 739-3483

Assistant Athletic Director - Business
Roger Barnson, 739-3480

Assistant Athletic Director - Development
Dr. Wayne Pearson, 739-3614

Sports Information Director
Dominic Clark, 739-3207

Assistant Sports Information Director
Linda Lehman, 739-3208

Ticket Manager
Sherman Bennett, 739-3678

Head Athletic Trainer
Dennis Ryan, 739-3380

Assistant Athletic Trainer
Dale Rudd, 739-3380

Women's Athletic Trainer
Jeannie Powers, 739-3150

Equipment Manager
Floyd Browning, 739-3154

Academic Advisor
Dallas Norton, 739-3670

Coordinator, Booster Activities
Davey Pearl, 739-3614

Head Football Coach
Tony Knap, 739-3400

Assistant Football Coaches
Steve Buratto, 739-3452
Tom Cruickshank, 739-3466
John Lowry, 739-3452
Roy Shivers, 739-3456
Adam Rita, 739-3456
Scott Schuhmann, 739-3156
Doug Johnson, 739-3156
Doug Filan, 739-3156
Rich Abajian, 739-3156

Head Basketball Coach
Jerry Tarkanian, 739-3295

Assistant Basketball Coaches
Ralph Readout, 739-3234
George McQuarn, 739-3234

Women's Basketball Coach
Dan Ayala, 739-3151

Assistant Women's Basketball Coach
Donna Wick, 739-3151

Head Baseball Coach
Fred Dallimore, 739-3499

Assistant Baseball Coaches
Jack Pryor, 739-3499
Ken Reed, 739-3484

Track and Cross Country Coach
Al McDaniels, 739-3256

Assistant Track Coaches
Thurban Warwick
Dave Roberts

Women's Cross Country Coach
Bonnie Rannald, 739-3636

Golf Coach
Chub Drakulich, 739-3289

Women's Golf Coach
Carol Peterson

Tennis Coach
Fred Albrecht, 739-3621

Women's Tennis Coach
Tina Kunzer

Volleyball Coach
Matti Smith

Soccer Coach
Vince Hart, 739-3483

Swimming and Water Polo Coach
Wesley Mock, 739-3636

Wrestling Coach
Dennis Finrock, 739-3672

Athletic Business Management Assistant
Charlotte Summers

Secretary to the Athletic Director
Susan Cahlan

Department Secretary
Suzette Cox

Fundraising Secretary
Shirley Blackburn

Football Secretary
Jinx Cochrell

Basketball Secretary
Carol Forsythe

Ticket Office Secretary
Le Riggle

GENERAL INFORMATION

Address
4505 Maryland Parkway
Las Vegas, Nevada 89154

University Telephone
(702) 739-3011

President
Dr. Brock Dixon

Chancellor
Dr. Donald Baepler

Athletic Director
Bill Ireland

Chairman, Physical Education
John Bayer

Faculty Athletic Representative
Dallas Norton

Public Information Director
Mark Hughes

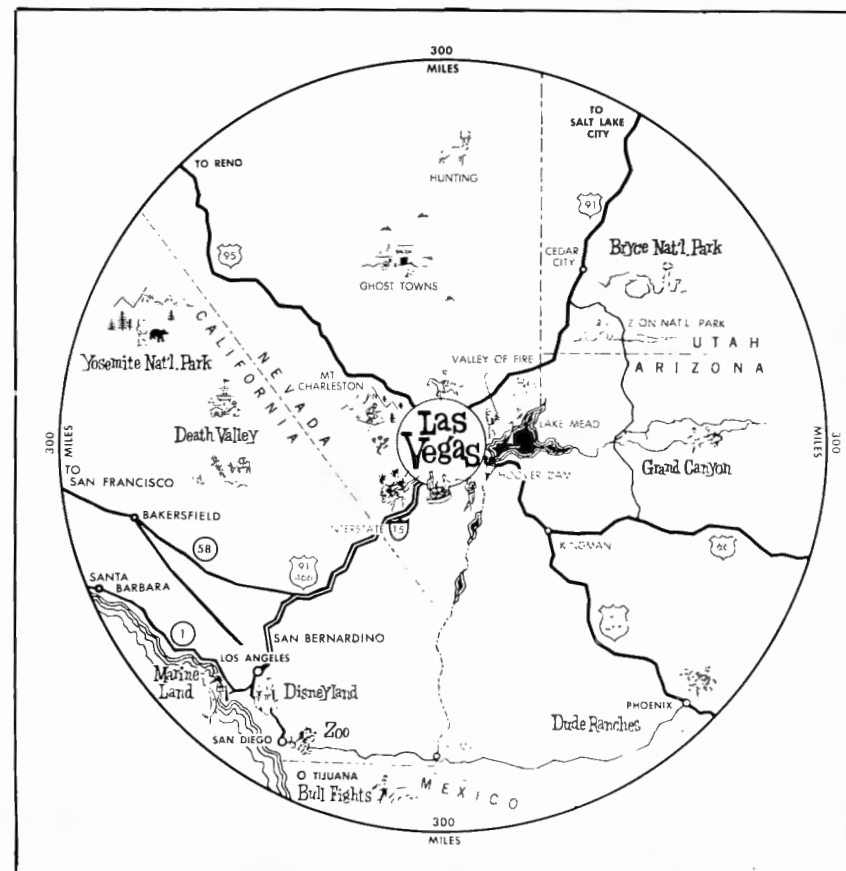
Estimated Enrollment
9,500

School Colors
Scarlet and Gray

Nickname
Lady Rebels

Conference
AIAW Independent

Field House
Las Vegas Convention Center
UNLV South Gym



THE CITY

Las Vegas enjoys a worldwide reputation as an entertainment and tourist capital. Each year, an average of nine million visitors relax in its clear, dry climate and take advantage of all the attractions of the world-famous "Strip." But the casual tourist gets only a narrow, often distorted view of perhaps the most rapidly-changing city in the country.

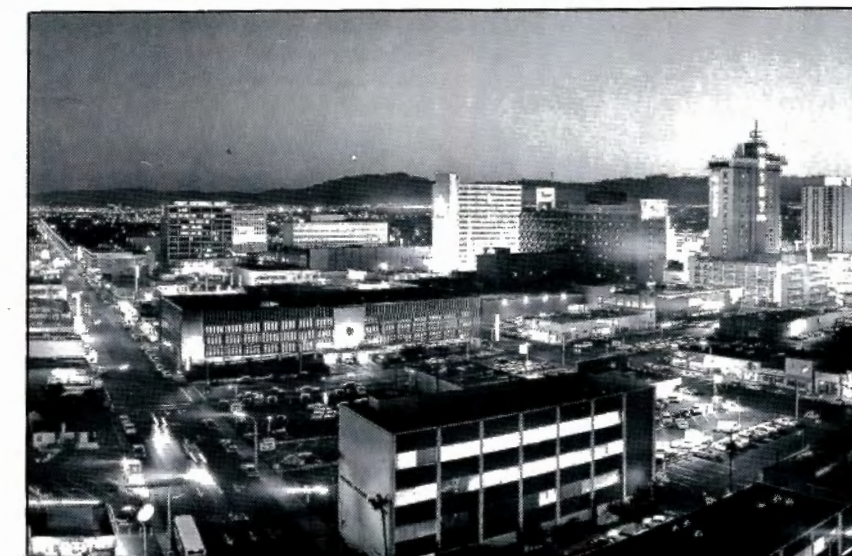
The community traces its history back to 1855 when a band of 30 missionaries journeyed to the brush-clad springs known as Las Vegas, or "The Meadows," to build a settlement for the Mormon Church. Even before the first settlers, the oasis in the desert had become a favorite stopping place for travelers on the Old Spanish Trail which ran between Santa Fe and Southern California. Actual development as a townsite didn't take place until 1905 when the railroad conducted a land auction before hundreds of prospective settlers. In all, 1,200 lots were sold in two days and the town was on its way to modern development.

By 1955 — a half century later — the desert train stop had grown to a community of more than 100,000 people. The year marked the founding of the University of Nevada, Las Vegas and the beginning of a new era in the city's history because, in the brief few years since then, Las Vegas has blossomed into a metropolis of more than 300,000 residents,

measurably broadened its civic outlook and created a cosmopolitan atmosphere quite unlike the rough-and-tumble tradition of the Old West which characterized it for so long.

Today, Las Vegas is essentially a brand new city. It is the fifth-fastest growing city in the United States, averaging 11 per cent each year. High-rise hotels, office and apartment buildings are being constructed all over town. The development of parks, museums, hospitals, libraries and new industry has further altered the face of the city. The university has emerged as its cultural center and there is a unique closeness between UNLV and the city which it serves.

Surrounding Las Vegas is one of the most picturesque areas of the Southwest, offering residents unlimited outdoor recreation the year around. Like to snow ski? There is a 12,000-foot mountain with complete ski facilities less than an hour's drive from the campus. Lake Mead and the Colorado River to the south offer fishing and all kinds of water sports — skiing, swimming, sailing, boat racing and skin diving. And in almost any direction out of town, the outdoor person can find a panorama of rugged red-rock landscapes, bike trails and forgotten ghost towns which await a weekend's exploration and a lifetime of memories.



THE UNIVERSITY

Las Vegas is known world-wide as an entertainment capital. But there is another side of the city which is gaining national recognition each year.

The University of Nevada, Las Vegas is one of the country's fastest-growing institutions of higher learning. UNLV is the hub of a new Las Vegas which adds another dimension to an already diverse and unique city.



Founded in 1957, UNLV is now the state's largest university with a total headcount enrollment of more than 9,000. Many of the university's academic programs already are well known across the nation.

To accommodate the increasing enrollment, UNLV has undertaken a massive construction program which has brought more than \$25 million worth of new buildings to the 350-acre campus in just the past five years.

These include one of the most modern teacher education facilities in the country, a major classroom and office building, a 690-seat drama theatre, a physical education complex complete with a 50-meter indoor swimming pool, new laboratories and classrooms in the life science, and a spacious 2,000-seat concert hall which serves as a cultural home for the entire community.

The next major project is a \$7 million addition to the James Dickinson Library. Ground is

expected to be broken in mid-1979 with completion expected about two years later. With nearly a third of a million volumes, the current three-story library has just about reached its capacity.

A generous gift from local attorney and businessman Artemus W. Ham, Jr. has provided seed money for a new fine arts building. It is the largest single private contribution the university has ever received for a building project.

The \$10.9 million facility is included in the university's 1979-83 capitol improvement request to the legislature. The center will house teaching, research and studio facilities for the departments of theatre arts, music and art.

Because it has become such an exciting place to live and teach, the university has been able to attract some of the brightest young professors in the country.

There are more than 350 faculty on the staff now. They come from distinguished centers of learning —

Berkeley, Harvard, Chicago, Princeton — and through their research and publications, they are earning a fine academic reputation for UNLV in circles of higher education.

There are currently 65 different degree programs available to students, including almost two dozen at the master's and doctoral levels.

The College of Hotel Administration, for example, ranks among the finest programs of its type in the United States, and its graduates hold top management positions in hotels, restaurants and hospitals the world over.

The university's reputation in the sciences is growing, too, as it carries out research projects in such fields as desert ecology, environmental biology and geology, taking full advantage of its unique South-western desert setting.

Two new research centers at UNLV, the Desert Biology Research Center and the Visibility Research

Center, have received national attention. UNLV is becoming an international leader in desert and environmental stress research through the desert biology center. The visibility center is the nation's first to monitor air quality and study technical and socio-economic problems of air pollution in western states.

The UNLV theatre arts department continues to earn regional and national awards for its outstanding dramatic productions, and music students are now earning credits playing behind the superstars of show business on the Las Vegas Strip.

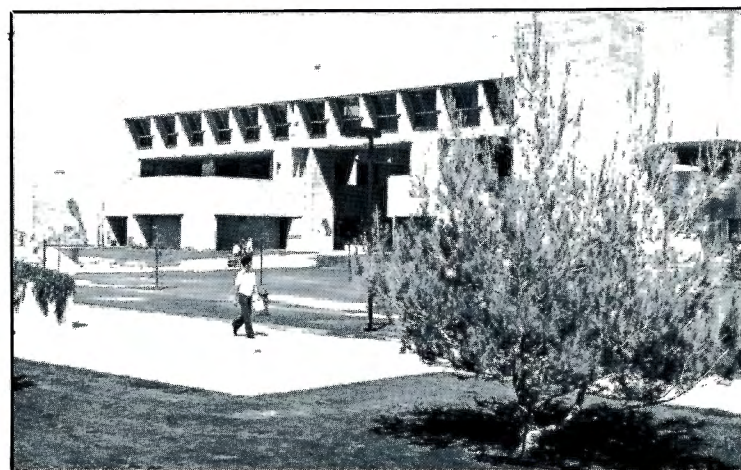
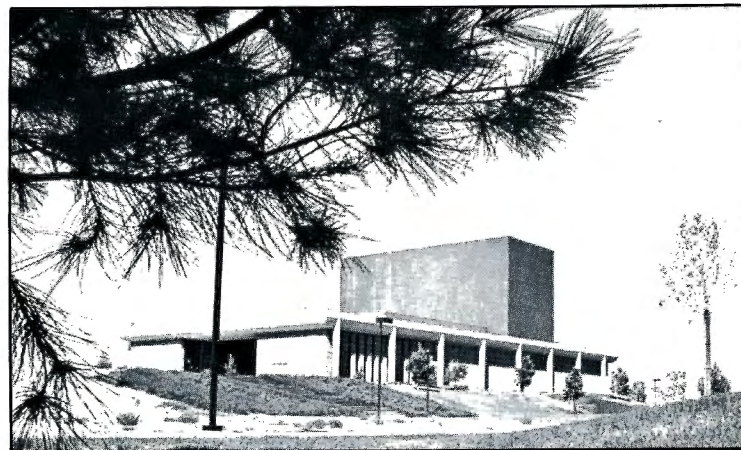
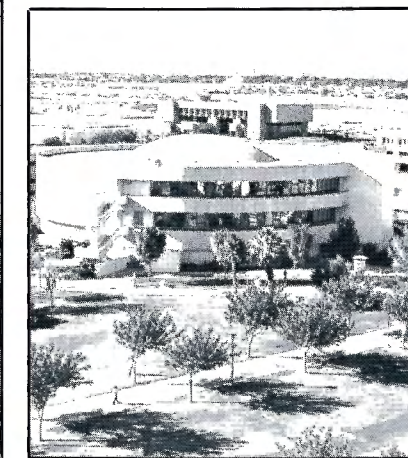
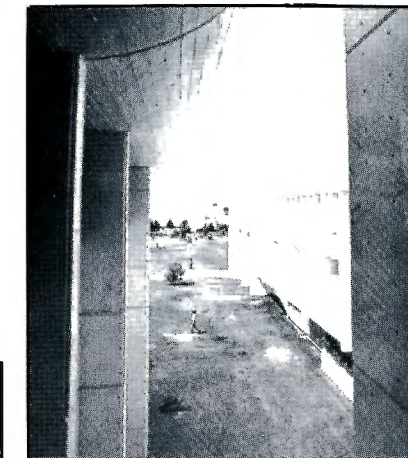
UNLV's student Jazz Ensemble recently was named the second best college jazz group in the world in competition in Switzerland. The group just returned from a critically acclaimed tour of the Orient.

The university also has a progressive teacher education program, a growing nursing department and solid preparation of

students in the social sciences, the humanities, business and economics.

The university also reaches out into the community through its aggressive continuing education program that last year enrolled 15,000 local residents — from housewives to business owners, graduates to four-year-olds.

The future is bright for UNLV as it completes its 21st year of service to Nevada through its program of teaching, research and public service.



DR. BROCK DIXON

President



Dr. Brock Dixon, vice president for administration, has been acting president of UNLV since April when Dr. Donald Baepler was named Chancellor of the University of Nevada System.

Dr. Dixon joined the administrative staff as dean of administration in 1971, becoming vice president in 1974. He was unanimously appointed by the Board of Regents as acting president.

He continues to keep the fast-paced style set by Chancellor Baepler and brings to the office a comprehensive and expert knowledge of public administration.

A political scientist, Dr. Dixon specializes in local government, public law and political theory. He continues to teach courses in the political science department.

Before coming to UNLV, he was provost and dean in the College of Arts and Sciences at Pacific University in Forest Grove, Oregon, from 1968 to 1971. From 1949 to 1968 he taught and held various administrative positions at Portland State College.

His experience there included professor of political science, chairman of the political science department, assistant to the dean of faculty and dean of administration.

He received his Ph.D. in 1957 from the University of Southern California. His doctoral dissertation is titled "Governing the Suburban Fringe of Portland, Oregon."

He was awarded the MA from the University of Oregon in 1949 and the AB from Pacific College in Newberg, Oregon, in 1939.

Research projects and articles on various administrative topics have appeared in several professional journals, and he has written numerous book reviews for Western Political Quarterly.

Memberships in professional organizations include the American Political Science Association, American Society for Public Administration, University Council for Citizenship Education, Western Political Science Association and Society for College and University Planning.

Dr. Dixon was the organizer and first president of the Columbian Research Institute, a non-profit corporation specializing in research in regional political and economic problems. He has been active since 1942 in the Naval Reserve and is now a commander, USNR, retired.

From 1972 to 1977 he served on the Nevada Statewide Training Advisory Committee, and for three years was a member of the Board of Trustees for Nevada Family, a halfway house for drug addicts.

Born in Huron, S.D., the 60-year-old administrator began his career in education in 1939 as a secondary school teacher. In addition to serving in the U.S. Naval Reserve from 1944-46, he was an officer for the U.S. Internal Revenue Service from 1942-1948.

BILL IRELAND

Athletic Director

Continuing to guide and direct one of the most dynamic and fastest-growing athletic departments in the entire country, Bill Ireland begins his sixth year as the UNLV Director of Intercollegiate Athletics as a talented and capable administrator. He moved up to his present position in 1973 after



starting and coaching the Rebel football program from 1968 through 1972.

The infant Rebels, under head football coach Ireland, reeled off four consecutive winning seasons with a near-perfect 8-1 mark in the first season of competition in 1968. During this time he accelerated the program from games with St. Mary's College and Southern Utah to power packed schedules which included major college opponents Utah State and the University of Miami (Florida). Ireland has taken further giant steps toward building UNLV into a major college program in every detail. He was instrumental in pushing for the Las Vegas Silver Bowl in 1970 and for its current expansion to 32,000 seats, and no one has worked harder to more diligently in putting the community behind the still youthful Rebel football program.

Keenly aware of growing trends in the world of sports, Ireland was a forerunner in the establishment of a women's athletic program four years ago at UNLV, and not at the expense of lowering the standards of the already-established programs. When he began his career as athletic director, the fledgling program had just seven intercollegiate sports (all men's).

Ireland now governs an intercollegiate athletic program which in 1978-79 will field 19 varsity teams, including seven in women's sports.

He has become even more prominent on the national scene. He has appeared before the United

States Senate Sub-committee investigating Title IX regulations (regarding women's athletics), has served on numerous committees in the National Collegiate Athletic Association, and is an energetically-active member of the National Association of Collegiate Directors of Athletics.

He has had articles published in Athletic Administrator, the national magazine of NACDA and he spearheaded the push which brought the 1977 national NACDA convention and workshop to Las Vegas and will again return it here in 1980.

As an administrator at UNLV he works closely with the University Rebels Club, the booster support group behind UNLV's drive to the top, is an advisor to the Athletic Council, and has served on the UNLV Faculty Senate.

Ireland entered high school coaching after graduation from the University of Nevada, Reno in 1952. He enjoyed success at every level with state championship teams in all sports.

Ireland returned to UNR in 1960 as an assistant football and head baseball coach. He served as defensive coordinator for Wolf Pack football and gained national recognition with NCAA championship baseball teams during the mid-60's.

Again this year he will have his highly popular "Rebel Report" show on KORK Radio and will be part of the broadcast team for Rebel football and basketball on KSHO-TV in Las Vegas. A native Nevadan, (born in McGill), he is an excellent speaker, a superb spokesman for one of the nation's most dynamic athletic programs.

Bill and Jeanne Ireland have seven children, four girls and three boys. This very sports-oriented family includes prep athletes Pat (17), a three-sport letterman at Clark High; son Mike (20), who is embarking on a TV sports production career currently manning the centerfield camera at Dodger Stadium; Terrance (14); and college co-ed Kelly (21).

Son-in-law Mike Culp (Chris) is a former Rebel defensive back and recent law school graduate; son-in-law Gary Carano (Kim) is a former outstanding prep athlete and older brother of former Rebel, and current Dallas quarterback, Glenn Carano; and son-in-law Greg Grouwinkle (Kerry) is a former College Division All-American defensive back for UNR.

ROGER BARNSON

Assistant
Athletic Director -
Business



After five years as UNLV's only assistant athletic director, Roger Barnson begins his sixth year with the Rebels with a new title, assistant athletic director for business management.

Not that he will be doing anything different than he has for the past five years, but because his specific expertise has been in that area he now has the title to go with it.

Barnson also is responsible for administering the seven sports — cross-country, basketball, swimming, golf, tennis, track and volleyball — in the women's athletic program.

If he continues to attack his job with the same tenacity of purpose he has in his previous five years, UNLV can be assured of a financially sound intercollegiate athletic program.

In actuality, Barnson's duties and responsibility to the department are far more encompassing than his title would hint. He is the business

manager for 19 intercollegiate sports (both men's and women's), as well as handling the accounts for the ticket manager's office, the athletic department main office, the sports information office, the trainer's office, and the insurance for the over 500 UNLV athletes during their respective seasons of competition.

Additionally, as the assistant athletic director, he is in charge of all travel plans for Rebel athletics, from charters to lodging, and he assists teams visiting Las Vegas in any way he can.

He is also the event manager for Rebel home football and basketball games. A bit beyond the call of duty, he has even been known to throw batting practice for the UNLV baseball team.

And, of course, he is the administrative assistant for athletic director Bill Ireland, with whom he has worked for eight consecutive years.

The personable Barnson is the first assistant AD in the brief, but busy athletic history of UNLV. A native of the area, he came to UNLV as a charter football coach in 1968 from Clark High School in Las Vegas. For five seasons, he coached the Rebel secondary and was Ireland's right hand man in that sport as well.

Barnson was born on December 17, 1938 in Boulder City, Nevada. As a prep he established a record which makes him one of the state's all-time performers. For three straight years in high school, Barnson's name was on the All-State football and baseball teams. He also competed on his varsity basketball team to round out an already productive athletic career.

He earned his master's degree from Northern Arizona University and got his shot at a head coaching job in 1965 when Clark High opened. In three seasons, his Charger football teams compiled a 17-8-0 mark. In his first season, he had a 4-4 mark. In 1966 it improved to 5-3, and in 1967 Barnson's squad went 8-1, losing only the State AAA championship game.

In his capacity at UNLV, Barnson has become an accomplished announcer, handling the emcee duties at numerous banquets and other events throughout the year.

Barnson and his wife, Tina, have two children: daughter Leigh Alison and son Roger, Jr.

DAN AYALA

Head Coach

A three-year 64-11 record for a .853 winning percentage is not a shabby accomplishment for any coach - especially for one who did not really want his job.

"I didn't initially want to coach it (Lady Rebels' basketball team)," admits fourth-year UNLV head coach Dan Ayala. "But it's been the women athletes - their attitude and desire to learn - that has kept me here."

For not wanting his job, Ayala certainly wasted no time establishing himself as one of the premier women's college basketball coaches in the nation.

In his first year at the helm, the Lady Rebels, behind the scoring power of Debra Waddy and the boardwork of Janice Fuller, posted 27 victories against only five losses. They climaxed the season with a third place finish at the National Women's Invitational Tournament.

The following year, the UNLV cagey ladies, featuring some outstanding performances from Waddy, Fuller, Belinda Candler and Cindy Perkins, enjoyed another successful season with a 14-4 mark. Highlighting the campaign were victories over nationally ranked Immaculata College (92-85) and Delta State University (82-76) in the Tournament of Champions at the

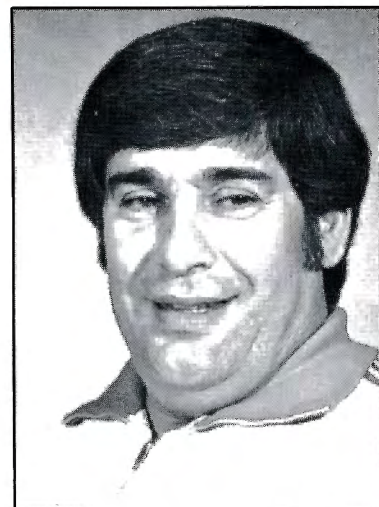
Las Vegas Convention Center.

Last season's edition proved to be just as spectacular. Led by Belinda Candler and Janie Fincher, the Lady Rebels compiled 15-game and 8-game winning streaks. The only losses of their 23-2 season occurred during mid-season at Kansas State and against UCLA at the AIAW District 8 Tournament.

Ayala's tutelage has produced two Lady Rebel All-Americans - Belinda Candler (First Team, 1977-78) and Janie Fincher (Honorable Mention, 1977-78). And, when the Women's Professional Basketball League opens this season, no less than five former Lady Rebels - Belinda Candler at Houston and Janie Fincher, Janice Fuller, Liz Galloway and Debra Waddy at Chicago - will be members of one of the league's franchises.

A friendly international relationship between Ayala and some Mexican basketball coaches has resulted in exceptional opportunities for the Lady Rebels. A typical UNLV schedule now includes a week of competition at the University of Mexico International Classic in Mexico City as well as some Mexican colleges visiting in Las Vegas.

Through diligence and determination, the UNLV head man also has developed one of the most prestigious women's college basketball tournaments in the country - the NIKE Tournament of Champions. This year's tourney features three schools which were ranked in the top four in the nation last year - North Carolina State



(28-4), ranked 3rd, Montclair State (22-6), ranked 4th, and the University of Maryland (24-3), ranked 2nd.

Ayala came to UNLV after twelve years of coaching on the scholastic, junior college and collegiate levels - Beaumont (CA) High School (four years, 48-22), Mt. San Jacinto College (three years, 57-18), Pasadena City College (three years, 72-18) and Cal Poly, Pomona (two years, 14-12). He joined the Rebel staff in 1973 as an assistant coach and schedule coordinator to Jerry Tarkanian, the head coach of the men's basketball team. He succeeded Barbara Quinn as the women's head coach in 1975.

Dan and his wife, Linda, have five sons and one daughter - twins Brian and Steven (13), Randy (11), Daniel (9), David (3) and Christie Lyn (2).



Donna Wick

Assistant Coach

Donna Wick is in her second year as the assistant coach of the Lady Rebels basketball team.

The 23-year old native of Iowa has been involved in competitive basketball for more than ten years.

Born in Morning Sun (IA) on January 3, 1955, she was graduated from Winfield High School where she earned four monograms in basketball. As a senior and team captain, she led her team in scoring while receiving All-State and Most Valuable Player honors. She also lettered four times as a shortstop on the softball team and three times in the 220 and 440 events on the track squad.

For two years, she performed on the hardcourt at Temple Junior College before transferring to the University of Nevada, Las Vegas. Wrapping up her career, she averaged 6.4 points a game while handing out 53 assists during her senior year.

Donna is eighth on the list of All-Time leading scorers with 426 points for a 8.7 points a game norm. She is one of eleven Lady Rebels to be included in the 300-point club.

Jeannie Powers

Women's Athletic Trainer

Jeannie Powers, a native of Fort Collins, Colorado, is in her first year as the athletic trainer for the women's sports programs at the University of

Nevada, Las Vegas. In her position, she is primarily responsible for the injury-preventive and recuperative treatment of the women athletes in volleyball, cross country, basketball, swimming, tennis, golf, and track and field.

The 23-year old Powers came to UNLV from Colorado State University, where she had served as an assistant athletic trainer since August 1977. She also instructed courses in first aid at CSU.

She also worked as a graduate assistant in the athletic training department at Colorado State and as a student athletic trainer at Northern Arizona University. She served her student teaching internship as an athletic trainer at Coconino High School in Arizona.



Powers earned a B.S. degree in physical education with a minor in athletic training from Northern Arizona University and a M.Ed. degree in physical education from Colorado State. She received her athletic training certification from NATA (National Athletic Trainers' Association) in May of 1976.

Jeannie was honored as the most outstanding senior student in women's physical education at Northern Arizona. She is a member of both NATA and AAPHER (American Association for Physical Education, Health and Recreation).

Linda Lehman

Assistant Sports Information Director

The former sports information director at Gannon College in Pennsylvania, Linda Lehman is the first assistant sports information director at the University of Nevada, Las Vegas.

Lehman, 26, was hired primarily to promote the women's intercollegiate sports program on the campus.

She handles information and publications services for the seven women's sports: volleyball, cross country, track and field, basketball, swimming, golf and tennis.

"Linda's hiring marks another milestone in the growing Lady Rebels sports program," comments Dominic Clark, UNLV sports information director.

Three new women's sports—golf, cross country and volleyball — have been added this year to the program and the athletic department is considering further expansion to include women's softball and gymnastics in the near future.

High points in the Lady Rebel program this year will include the third Nike Tournament of Champions Dec. 8-9 in the Las Vegas Convention Center, when three of the top women's college basketball teams will be visiting the city to compete against UNLV.

Lehman will be working to build a national reputation for the Lady Rebels in track and field, a sport in which UNLV has qualified at least 10 women athletes for the national championships during each of the past two years.

The university's first women's intercollegiate sport — basketball — was established four years ago.

Lehman divided her time for the past year between Gannon College and the Greater Erie (Pa.) Y.M.C.A. where she served as director of public relations.



She holds a master's degree in sports administration from Ohio University in Athens and a bachelor's degree in English from the University of Pittsburgh.

As an undergraduate, she was a sports information student assistant, yearbook sports editor and sports editor of the campus newspaper. She is a member of the College Sports Information Directors of America.

SEASON OUTLOOK

Take one returning veteran, add a couple of junior college transfers and nine young yet talented newcomers, and subtract a considerable amount of collegiate playing experience.

If modern math could solve this problem, then the outcome of the 1978-79 UNLV Lady Rebels' basketball season would be known. Since it can not, one must rely on the thoughts of the head coach, Dan Ayala.

"We do not have much coming back," admits Ayala, who has compiled an incredible 64-11 record in three years at the Las Vegas college. "We're limited in our experience," he continues, "but we have excellent speed and quickness."

Anita Carter, a 5-5 two-year letterwinning point guard from Fresno, California, is the only returning veteran for the Lady Rebels. Last season as a starter in the backcourt, she owned game averages of 4.6 points and 3.5 assists while seeing action in 25 contests. As a freshman, she scored at a 3.7 points a game clip while appearing in 18 games.

To add some more collegiate playing experience to the squad, Ayala has welcomed a pair of Oklahoma college products — Teresa Willis and Paula Odnoga — to the UNLV campus.

A 5-9 junior forward, Willis comes to Las Vegas from Seminole Junior College, which placed second in the 1977 NCAA National Junior College Tournament and third in last year's event. While twice receiving All-America honors, she averaged 12.2 points and 11 rebounds a game for the Oklahoma junior college.

Odnoga, a 5-11 center-forward, saw action for the Rangers of Northwestern Oklahoma State University last season. A native of Midwest City, Oklahoma, she had norms of 15 points and 9 rebounds a game for the Alva (OK) college. As a freshman, she played beside Willis at Seminole.

Completing the 1978-79 Lady Rebels' roster are nine first-year performers — 6-0 center Kathie Calloway (Michigan City, IN-M.C. Rogers), 5-9 forward Cathy Welch (Mentone, IN-Tippecanoe Valley), 5-3 guard-forward Sandra Hamilton (Las Vegas-Chaparral), 5-4 guard Kelli Reed (Imperial, CA-Imperial), 5-4 guard Tina Glover (Pittsburg, CA-Pittsburg), 5-7½ forward Yatska Aldarondo (Rio Piedras, Puerto Rico-University), 5-7 forward Liz Mello (Las Vegas-Clark), 5-5 guard-forward Ida Perkins (Las Vegas-Western), and 5-7 forward-center Shelly Purdy (Eureka, NV-Eureka County).

"All of these young ladies have very good credentials," notes Ayala. "They are enthusiastic, eager to learn and hard working with a lot of desire to continue our tradition as a national championship contender."

To challenge for the national championship and continue a 37-game home win streak, the Lady Rebels will tackle an ambitious 26-game schedule which features 22 contests at the Las Vegas Convention Center and the UNLV South Gymnasium. Road meetings include visits to Cal State-Fullerton and three Western Athletic Conference foes — Brigham Young University,

the University of Utah and the University of New Mexico.

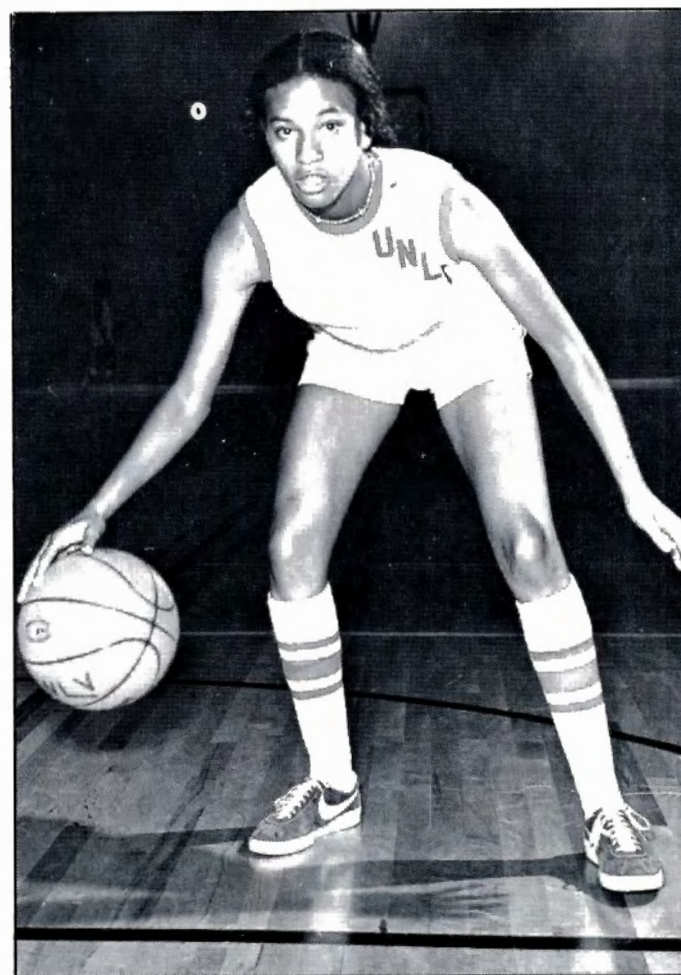
"We have our work cut out," says Ayala. "This is an extremely tough schedule with many of the country's top teams."

Highlighting the home card is the Third Annual NIKE Tournament of Champions on December 8 and 9 at the Las Vegas Convention Center. Visiting teams, and their 1977-78 final record and national ranking, include North Carolina State (28-4, 3rd), Montclair State (22-6, 4th) and the University of Maryland (24-3, 2nd).

On the international scene, the Lady Rebels will be matched up with the University of Mexico, the University of Guadalajara and the University of Chihuahua in the University of Mexico International Classic in Mexico City in mid-January. Mexico and Chihuahua also will visit Las Vegas.

"We will be a very young, predominantly freshman club with little experience at the varsity level," Ayala concedes. "On the plus side, we will be a very quick, intelligent and enthusiastic team. We will be a very aggressive, fast-breaking and quick shooting club."

"In all," he concludes, "this season should be a very exciting one for Lady Rebel basketball with many tough, action-packed ball games."



Junior guard Anita Carter. . .only returning letterwinner.



Anita
Carter

11

5-5, Junior
Guard



Anita Carter

Two-year letterwinning Lady Rebel and only returning veteran from last year's 23-2 squad....owned game averages of 4.6 points and 3.5 assists while seeing action as a starting point guard in 25 games as a sophomore....led the squad with 87 assists....as a freshman, she scored at a 3.7 points a game clip while appearing in 18 games....earned three basketball monograms at Hoover High School in Fresno, California....performed on three league and three Valley championship teams....also appeared in the City-County All-Star game following her senior year of high school.

Personal: A 1976 graduate of Hoover High School in Fresno, California....has brothers who play basketball, track and football and a sister who performs on the track team and the basketball court....field of major study at UNLV is journalism....plans to attend graduate school and pursue a career in news reporting....works as a student assistant in the UNLV sports information office....birthdate is May 27, 1958.



Paula
Odnoha

23

5-11, Junior
Forward-Center



Paula Odnoha

Transfer from Northwestern Oklahoma State University in Alva....accumulated norms of 15 points and 9 rebounds a game for coach John Keely's squad....as a freshman, she played beside Teresa Willis as a member of the NCAA Junior College national runner-up team, Seminole Junior College....earned three basketball letters at Choctaw (OK) High School....was a frontline performer on the 1975 high school state cage championship squad....also appeared in the state tournament and was a member of the All-Tournament team in 1976....was the recipient of both All-State and All-City honors.

Personal: Graduated from Choctaw (OK) High School in the spring of 1976....decided to come to UNLV because of the reputation of the basketball program....her brother also excels at basketball....nickname is PO....academic major at UNLV is physical education....plans a career as either an athletic trainer or a coach on the collegiate level.



**Teresa
Willis**

42

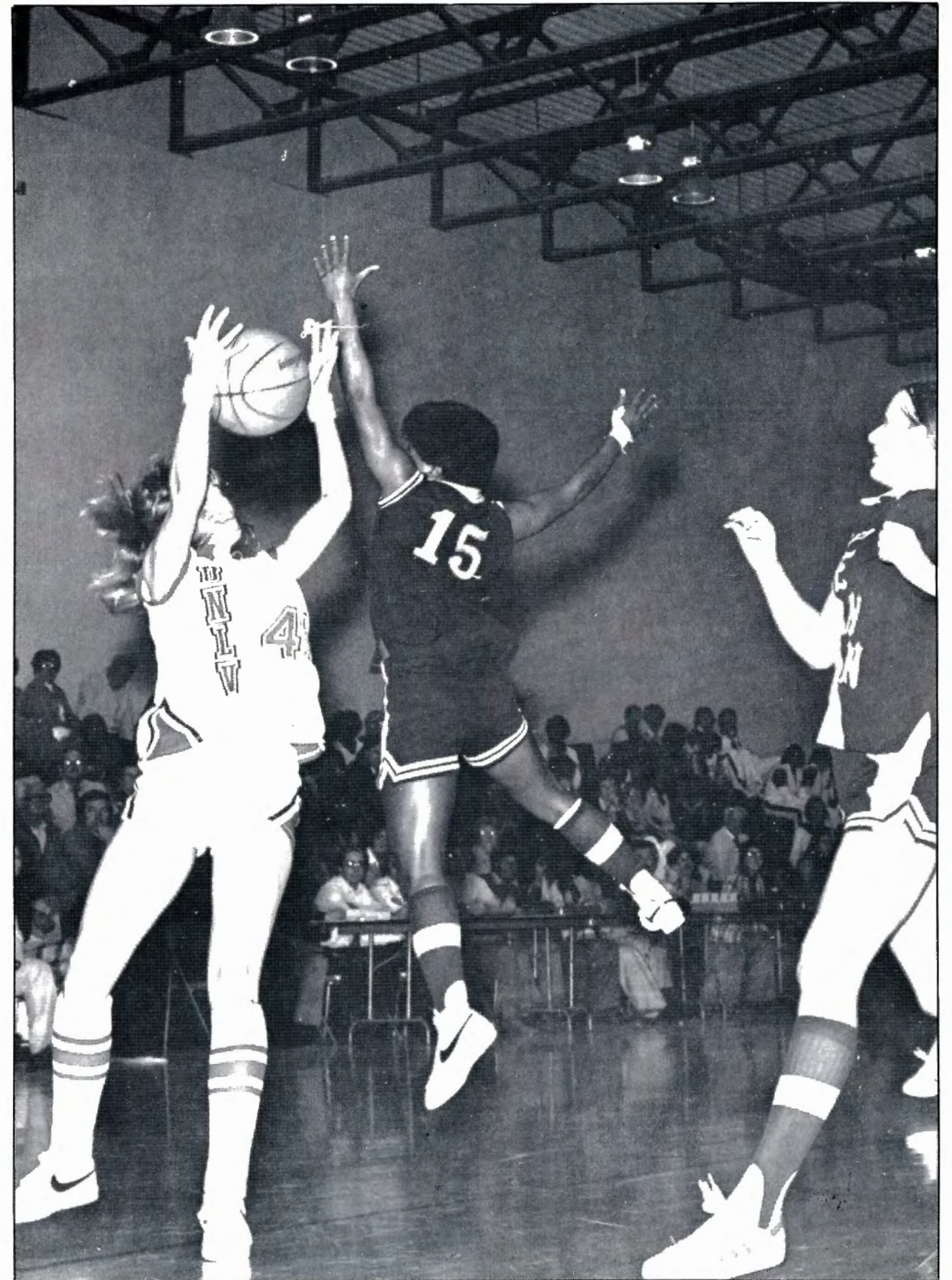
5-9, Junior
Forward



Teresa Willis

Junior college transfer from Seminole Junior College in Oklahoma.....had a 12.2 scoring average and 11 rebound norm during her first two years of college.....led coach Dixie Woodall's squad to the runner-up position in the 1977 NCAA National Junior College Basketball Tournament and to a third place finish last year.....received recognition twice as a Junior College All-America.....earned four basketball letters at Olive High School in Drumright, Oklahoma.....was selected to the high school All-State team.....winner of the Jim Thorpe Award.

Personal: A 1976 product of Olive High School in Drumright, Oklahoma.....selected UNLV to complete her college education "because of the basketball program and a good education".....area of concentration is physical education.....has ambitions to teach or play professional basketball after graduation from UNLV.....has brothers and sisters who perform on the hardcourt in high school.....her husband's name is Mike.....celebrated her twentieth birthday on September 3rd.



Yatska Aldarondo



34

5-8, Freshman
Forward

Yatska Aldarondo

Multi-sport (basketball, volleyball, softball and track and field) athlete from Rio Piedras, Puerto Rico.....on the hardcourt, she has seen action at the Pan American Junior Championship in California and the Caribbean and Centro-American Championship in Panama, El Salvador and the Dominican Republic.....has been honored as the Best Female Athlete and the Most Valuable Female Basketball Player in Puerto Rico.....on the volleyball international scene, she has performed at the N.O.R.C.E.C.A. Championships in Santo Domingo, the Friendship Tournament in New York City and the Pan American Games in Mexico.....also participated in the Caribbean and Central American Table Tennis Tournament in the Virgin Islands.....received Puerto Rican Female Player of the year awards in volleyball and softball.

Personal: May 1978 graduate of University High School in Rio Piedras, Puerto Rico.....academic major is physical education.....birthdate is July 27, 1960.



Kathie Calloway



4

6-0, Freshman
Center

Kathie Calloway

One of the most highly recruited female basketball players in the country last season.....in addition to basketball, she participated in volleyball, softball, track and tennis in high school.....scored at a 15.7 points a game clip while averaging 14 rebounds during her senior season.....led coach Earl Cunningham's squad to the conference, sectional and regional championships.....highlighted her last high school year of competition by being selected to play in the Indiana-Kentucky All-Star basketball game.....in the contest, she hit on six of eleven shots from the field for twelve points and grabbed seven rebounds while blocking one shot.....also advanced to the state finals in the low hurdles during her sophomore and junior years.

Personal: Graduated from Rogers High School in Michigan City, Indiana last spring.....elected to come to UNLV because the Las Vegas school "offered me what I was looking for in a college and they play the type of game I'm capable of playing".....has ambitions for the Olympics and professional basketball.....birthdate is the 14th of April 1960.



**Tina
Glover**

13

5-4, Freshman
Guard



Tina Louise Glover

Excellent ball handler and good shooter from Pittsburg, California.....third team high school All-America selection.....led coach Al Bonano's team in scoring (25 ppg), assists (7 apg) and steals (5 spg) during her junior and senior seasons.....was a member of the All-Tournament and All League squads.....was elected the captain of her team and received the Most Valuable Player and the Flecto Fitzpatrick awards.....also earned monograms in volleyball and cross country as a prepster.

Personal: A 1978 product of Pittsburg High School in Pittsburg, California.....decided to come to UNLV "because of the style of play, the schedule and I like the people and the atmosphere".....the highlight of her high school career was being undefeated.....is undecided about her field of concentration at UNLV.....after graduation from college, she would like to pursue a career in professional basketball.....celebrated her eighteenth birthday on October 14th.



**Sandra
Hamilton**

3

5-3, Freshman
Guard



Sandra Hamilton

Three-sport performer at Chaparral High School in Las Vegas.....lettered for four years in basketball and track and for one year in volleyball.....averaged 18.2 points and 7.2 rebounds a game as a senior.....was a member of the All State, All League and All Tournament teams.....was selected as the Most Valuable Player as she led coach Jean Brooks' cagers to a second place finish in the state play-offs.....also was named Most Valuable Player of the State AAA track championship team.

Personal: Compiled a 3.6 grade point average while a student at Chaparral High School in Las Vegas.....chose UNLV to further her education because "I like the competition and I feel coach Ayala can coach me to the 1980 Olympics".....her mother, a teacher, and father, a postman, and her high school sister are all athletically inclined.....her academic major at UNLV is accounting.....following graduation from the Las Vegas college, she would like to play professional basketball and pursue an accounting career.....she will be 19 years old on January 19th.



**Liz
Mello**

44

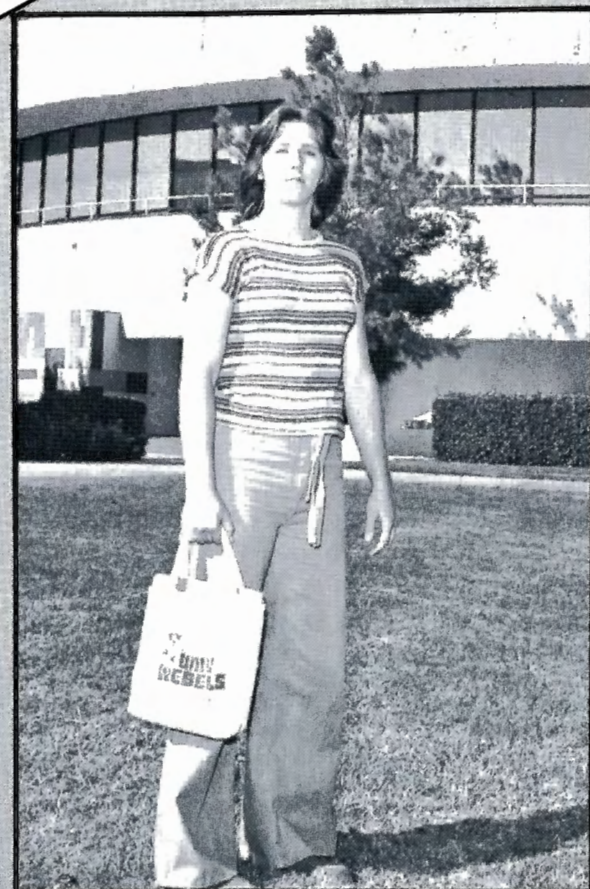
5-7, Freshman
Forward



Liz Mello

One of three Las Vegas who will don the gray and scarlet for the Lady Rebels this season.....lettered in basketball (three years), volleyball (three years), softball (two years) and track (one year) at both Clark and Bonanza High Schools.....owned a 14.0 scoring average on the hardcourt.....was a member of basketball and volleyball high school honor squads.....performed on championship teams in basketball in the Nevada-Sunset league and in softball and volleyball in the city league.....also stands out as a hitter for coach Matti Smith and the Lady Rebel volleyball squad.

Personal: June 1978 graduate with a 3.7 grade point average from Clark High School in Las Vegas.....also attended Bonanza High School in the city.....has ambitions to play professional basketball.....major at UNLV is physical education.....plans a teaching career.....celebrated her eighteenth birthday on June 17th.



**Ida
Perkins**

32

5-5, Freshman
Guard-Forward



Ida Perkins

Comes to UNLV from Western High School in Las Vegas.....earned three monograms in both basketball and softball.....led her basketball team in the scoring column for two years (1975-76, 1976-77).....performed on coach Jim Aiwohi's cage championship team at Western in 1975-76.....received Most Valuable Player honors in both basketball and softball.

Personal: Graduated with a 3.2 grade point average from Western High School in Las Vegas last spring.....selected UNLV for undergraduate study because of the reputation of the basketball program.....has aspirations for a professional basketball career.....her sisters and brother also are outstanding athletes.....undecided about a major field of concentration.....date of birth is September 4, 1960.



Shelly
Purdy

10

5-7, Freshman
Forward-Center



Shelly Purdy

Tri-sport athlete who comes to UNLV from Eureka, Nevada, which is situated in the central part of the state.....averaged 14 points and 10 rebounds a game during her senior year at Eureka County High School.....earned two varsity basketball letters on coach Isadore Sara's squad.....also received two monograms in both track and volleyball.....played on the Eureka league titlests and the state Division B championship cage team.....selected to the State All-Tourney Division B Team in 1977.....attended Redmond High School in Oregon before accumulating a 3.5 grade point average at Eureka.

Personal: Graduated from Eureka (Nevada) High School last spring.....selected UNLV to further her education because of the "reputation of the basketball program".....academic major is child counseling and recreation.....plans to coach and work with children following graduation.....birthdate is the 4th of May, 1960.



Kelli
Reed

15

5-4, Freshman
Guard



Kelli J. Reed

Lettered in basketball (four years), softball (three years), and volleyball (three years) at Imperial (CA) High School.....averaged 20.3 points and 5.3 assists a game during her senior year.....set a new school record with 1,075 career points.....performed on the league and division champion squads in basketball and softball.....received All Southern California Interscholastic Federation honors during her senior year.....also earned All League accolades three times in basketball and twice in softball.....owned a .550 batting average on the softball team.

Personal: A 1978 graduate of Imperial (CA) High School.....selected UNLV because "it has the academic program I want, a super coach and a history of top-flight basketball teams".....her brother, Gary, received All SCIF as a guard on the basketball team and as a long jump and high jump specialist on the track team.....major field of concentration at UNLV is physical education.....plans a coaching career after graduation from college.....birthdate is the 28th of December 1959.





Cathy
Welch

21

5-9, Freshman
Forward

Cathy Welch

Recipient of eleven letters in basketball (four), track (four) and volleyball (three) at Tippecanoe Valley High School in Mentone, Indiana.....holds all of her school's scoring records while averaging 19.3 points a game in four years of varsity competition.....her senior season stats included a 19.5 scoring and 13.3 rebounding norm.....set a game individual high mark of 42 points during her junior year.....highlighted her final year of play with an appearance in the Indiana-Kentucky All-Star contest in Market Square Arena in Indianapolis.....earned Fort Wayne area All-Star honors.....performed on the Indiana state softball championship team in 1977.

Personal: Received a high school diploma last spring from Tippecanoe Valley High School in Mentone, Indiana.....came to UNLV with ambitions of "winning a national championship".....major area of study is physical education.....plans to pursue a coaching career following graduation from UNLV.....date of birth is February 10, 1960.



1978-79 Lady Rebels Basketball Team

NAME	POSITION	CLASS	HT.	AGE	HOMETOWN-HIGH SCHOOL
Aldarondo, Yatska	Forward	FR	5-7½	18	Rio Piedras, Puerto Rico (University)
Calloway, Kathie	Center	FR	6-0	18	Michigan City, Indiana (M.C. Rogers)
Carter, Anita**	Guard	JR	5-5	20	Fresno, California (Hoover)
Glover, Tina	Guard	FR	5-4	18	Pittsburg, California (Pittsburg)
Hamilton, Sandra	Guard-Forward	FR	5-3	18	Las Vegas, Nevada (Chaparral)
Mello, Liz	Forward	FR	5-7	18	Las Vegas, Nevada (Clark)
Odnoha, Paula	Center	JR	5-11	20	Midwest City, Oklahoma (Choctaw)
Perkins, Ida	Guard-Forward	FR	5-5	18	Las Vegas, Nevada (Western)
Purdy, Shelly	Forward-Center	FR	5-7	18	Eureka, Nevada (Eureka County)
Reed, Kelli	Guard	FR	5-4	18	Imperial, California (Imperial)
Welch, Cathy	Forward	FR	5-9	18	Mentone, Indiana (Tippecanoe Valley)
Willis, Teresa	Forward	JR	5-9	20	Jennings, Oklahoma (Olive)

* - letters earned

HEAD COACH: Dan Ayala
64-11 (3 years)
(702) 739-3151

ASSISTANT COACH: Donna Wick
Second Year
(702) 739-3152

UNLV Lady Rebels 1977-78 Final Basketball Statistics

RECORD: W 23 L 2 (Home: 14-0; Away: 6-0; Neutral: 3-2)

Player	G	FGM-FGA	Pct.	FTM-FGA	Pct.	Reb.	Ave.	PF-FO	TP	Ave.	A
CANDLER	25	226-407	.555	158-202	.782	343	13.7	56- 2	610	24.4	18
FINCHER	25	170-467	.364	45- 59	.763	143	5.7	68- 0	385	15.4	69
HUDLOW	25	125-254	.492	105-143	.734	150	6.0	75- 4	355	14.2	23
TILLMAN	24	113-316	.358	76-111	.685	154	6.4	90- 9	302	12.6	51
PERKINS	24	125-279	.448	42- 68	.618	160	6.7	95- 9	292	12.2	41
WALKER	18	44-116	.379	48- 78	.615	133	7.4	56- 4	136	7.6	7
CARTER	25	46-160	.288	23- 31	.742	62	2.5	79- 4	115	4.6	87
ETHIER	24	48-124	.387	13- 27	.481	42	1.8	28- 0	109	4.5	34
FULLER	15	7- 26	.269	2- 6	.333	16	1.1	5- 0	16	1.1	3
SKINNER	17	4- 14	.286	2- 5	.400	17	1.0	12- 0	10	.6	0
OTHERS		16- 41	.390	2- 10	.200	11		16- 1	34		20
(TEAM REBOUNDS)						158					
LADY REBELS	25	924-2204	.419	516-740	.697	1389	55.6	580-33	2364	94.6	353
OPPONENTS	25	751-1703	.441	380-586	.648	1273	50.9	600-37	1880	75.2	338

TURNOVERS: TEAM (527) — Perkins (85), Candler (76), Ethier (66), Carter (65), Tillman (57), Fincher (57), Walker (51), Hudlow (37), Fuller (12), Skinner (5), Others (16).
 OPPONENTS (833).

STEALS: TEAM (226) — Tillman (38), Fincher (37), Perkins (33), Carter (33), Hudlow (27), Candler (26), Ethier (11), Walker (11), Fuller (1), Skinner (1), Others (8).
 OPPONENTS (106).

UNLV	Opponents	Opp.	Leading Scorer	Top Rebounder
94	UNIVERSITY OF NEW MEXICO	74	Candler-23	Candler-18
96	UNIVERSITY OF NEW MEXICO	78	Fincher-18	Perkins-15
103	EASTERN OKLAHOMA STATE	68	Fincher-19	Candler-17
111	UTAH STATE UNIVERSITY	71	Candler-36	Candler-22
103	UNIVERSITY OF UTAH	70	Fincher-24	Candler-15
89	TEMPLE JUNIOR COLLEGE	70	Candler-23	Candler-12
95	TEMPLE JUNIOR COLLEGE	84	Candler-27	Perkins-11
93	+CAL STATE, FULLERTON	69	Fincher-32	Candler-15
101	+DRAKE UNIVERSITY	86	Candler-38	Candler-18
96	+WILLIAM PENN COLLEGE	80	Candler-29	Candler-14
106	ARIZONA STATE UNIVERSITY	80	Candler-27	Candler-8
103	UNIVERSITY OF COLORADO	39	Candler-31	Candler-17
113	KANSAS STATE UNIVERSITY	84	Candler-35	Candler-14
110	Weber State College	92	Candler, Hudlow, Perkins-20	Candler-7
88	Utah State University	71	Hudlow-22	Candler, Walker, Tillman-9
62	*Kansas State University	89	Candler-18	Walker-13
107	*Baylor University	82	Candler-30	Candler-14
92	University of Nebraska, Lincoln	74	Fincher-22	Perkins-10
86	Cal State, Fullerton	76	Candler-31	Candler-13
90	BRIGHAM YOUNG UNIVERSITY	73	Candler-22	Candler-10
79	Pepperdine University	66	Candler-20	Perkins-10
86	San Francisco State	69	Candler-28	Candler-19
86	#San Jose State	55	Candler, Walker-17	Candler-15
87	#Cal Poly, Pomona	83	Candler-24	Candler-12
88	#UCLA	100	Candler-30	Candler-14

HOME GAMES IN ALL CAPS
 +Tournament of Champions
 *Jayhawk Classic
 #AIAW District 8 Tournament



NIKE Tournament

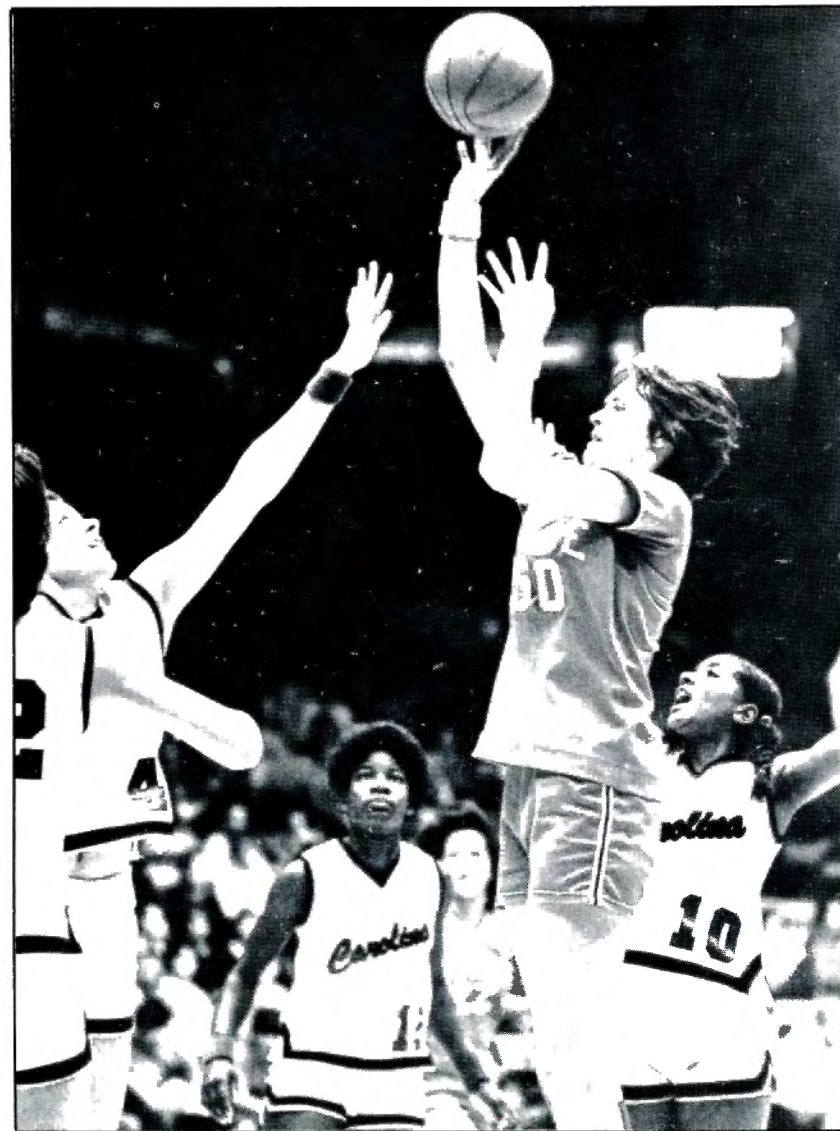
Women's college basketball at its bestest best!

What better way to describe the NIKE Tournament of Champions, which will be hosted by the Lady Rebels on December 8 and 9 at the Las Vegas Convention Center. Indeed, the three visiting teams — North Carolina State, Montclair State and the University of Maryland — compiled a combined 81-16 mark for an incredible .835 winning percentage while being ranked nationally in the top four last season.

Expectations are high for the Wolfpack at North Carolina State as no less than ten letterwinners return from last year's 29-5 squad which finished with a third-place national rating.

"For the first time since I have been here at State, I can say that we are fielding an experienced and seasoned team," says head coach Kay Yow, who is heading into her fourth year as the Wolfpack mentor. "We are proven at more spots and have both quality and depth at those positions."

One of those "spots" is the pivot, which is handled by All-America Genia Beasley, who led State to the Region II title and Central Satellite finals with 19.3 points and 10.6 rebounds per game.



Genia Beasley
North Carolina State University

Beasley played on the American Junior Pan American team as a sophomore and saw action in the Hanes Underalls All-Star Classic, the Women's All-American Basketball Classic and as a member of the U.S. National Women's team which toured the Soviet Union this summer.

Joining Beasley at the opening tip-off probably will be 5-9 senior forward Christy Earnhardt (8.7 ppg, 4.7 rpg), 6-0 junior forward Ronnie Laughlin (9.3 ppg, 4.6 rpg), 5-10 sophomore forward Trudi Lacey (11.7 ppg, 4.7 rpg) and 5-10 sophomore guard Ginger Rouse (9.3 ppg, 3.3 rpg).

For early reserve duty, coach Yow will call upon the services of 6-5 junior June Doby (4.4 ppg, 3.5 rpg) and 5-10 senior Lorraine Owen (3.3 ppg, 1.6 rpg) on the frontline and 5-7 junior Kelia Coffey (1.2 ppg, 0.5 rpg), 5-6 sophomore Beth Fielden (5.4 ppg, 1.8 rpg), 5-6 junior Michelle Parker (0.5 ppg, 0.8 rpg) and 5-8 freshman Connie Rogers, the only recruit, in the backcourt.

While the Wolfpack is blessed with a bevy of veterans, coach Maureen Wendelken of Montclair State is faced with the task of replacing quite a bit — over 50 points and 17 rebounds a game, to be exact.

Graduated from last year's fourth-ranked 25-7 ball club were three-time All-America Carol Blazejowski (38.6 ppg, 9.9 rpg) and forward Wanda Szeremeta (12.2 ppg, 7.3 rpg).



Kris Kirchner
University of Maryland

of Champions

Pat Colasurdo, a 5-9 forward-center, leads the contingent of Squaw returnees. The senior frontliner was the Eastern Regional Champions' third best scorer with a 11.6 points a game norm. She also grabbed 8.3 rebounds in each contest.

A pair of guards, 5-1 junior Jill Jeffrey (6.7 ppg) and 5-3 junior Cathy Meyers, also are returning from starting roles in 1977-78.

Completing the veteran nucleus are 5-9 senior forward Karen Smith (6.2 ppg, 4.2 rpg), 5-6 junior guard Alice Schmidt (3.8 ppg, 2.4 rpg) and 6-0 senior center Janice TERNYK (3.3 ppg, 2.9 rpg).

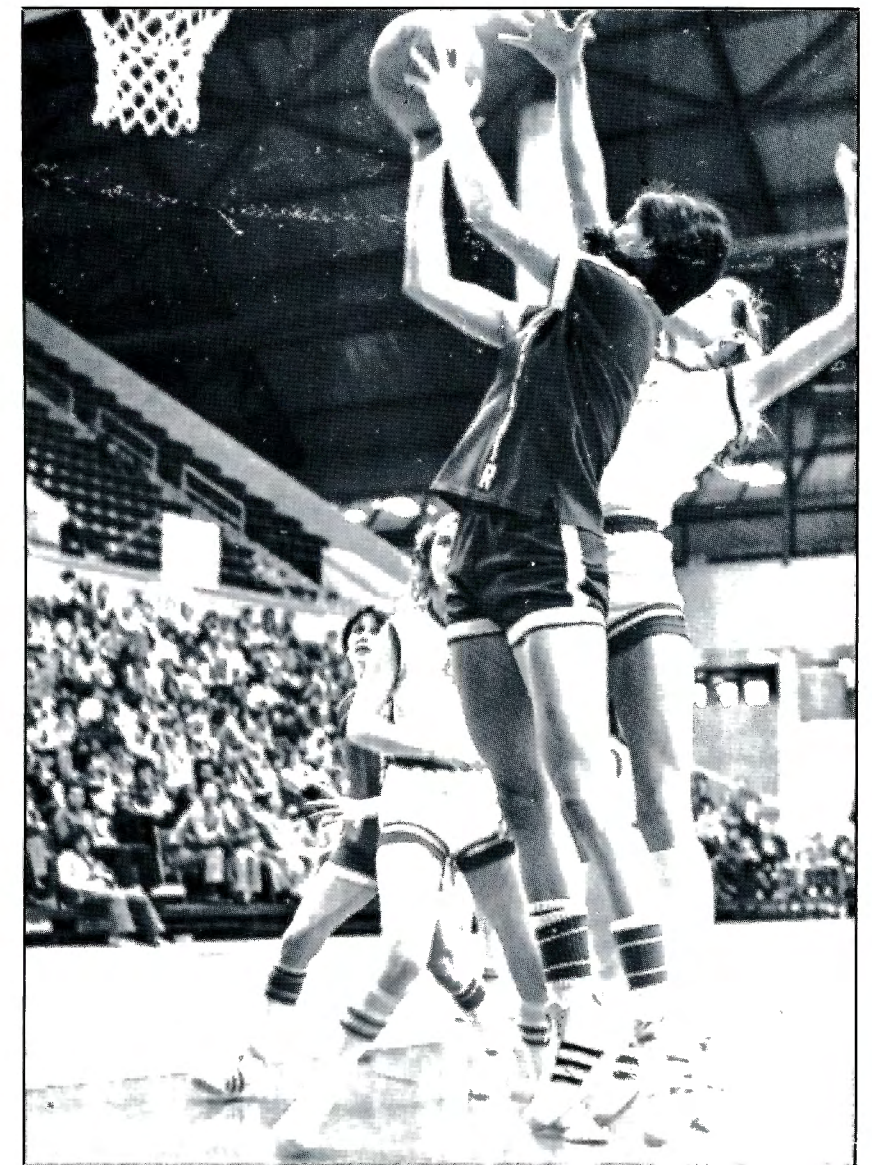
To add depth to the squad, coach Wendelken has recruited three New Jersey prepsters to the Upper Montclair (NJ) college. Fran Klak, a 5-11½ center, and 5-9 forward Robin Crawford will strengthen the frontline while the talents of 5-4 Daisy Flood will be utilized in the backcourt.

Like the Squaws of Montclair State, the Terrapins of the University of Maryland also lost an All-America, Tara Heiss, a spirited floor general who led last year's team in scoring (14.3 ppg) and assists (249). Forwards Debbie Jones and Mary Briesse also have received degrees and Jane Connolly has transferred to another school.

In her fourth year as head coach, Chris Weller welcomes back four starters from the 27-4 national finalist squad — 6-3 sophomore center Kris Kirchner (13.5 ppg, 10.5 rpg), 5-9 sophomore guard Betsy Bailey (12.7 ppg), and 5-9 senior forward Jane Zivalich (12.4 ppg) and 6-1 senior forward Debbie Stewart (10.1 ppg, 6.7 rpg).

As just a freshman, Kirchner proved to be one of the top centers in the college game as she led the Terrapins in rebounding and was second in the scoring column. Zivalich missed the championship game with UCLA because of a knee injury, and the Maryland coaching staff is hoping that off-season surgery has been successful.

A couple of backcourt performers, 5-6 senior Lisa Abood (2.9 ppg) and 5-3 senior Lisa Schlesinger (3.4 ppg), and two forecourters, 6-5 junior center Krystal Kimrey (3.5 ppg) and 6-1 sophomore forward Gail Hook (4.6 ppg), round out the list of returnees. Pam Reaves, a 5-10 forward, and 6-1



Pat Colasurdo
Montclair State

forward Doreen Love, who were both sidelined last season with knee injuries, also are back after summer operations.

To maintain a national contender reputation, Weller has completed the Terps' roster with a trio of scholastic standouts — 5-10 guard-forward Myra Waters (Toledo, Ohio), 5-6 guard Lynn Callander (Columbus, Ohio) and 6-1 forward-center Lydia McAliley (Philadelphia, PA).

With just one returning veteran, coach Dan Ayala's Lady Rebels, who have captured the two previous tournament championships, will have their work cut out for them as they seek to retain their title and to continue their 37-home game winning streak.

Considering the overwhelming amount of talent which will be appearing under the domed arena, it almost seems unfair that only one team can claim the title.

One thing is certain, though. The Wolfpack, the Squaws, the Terrapins and the Lady Rebels all will be winners with the crowd.



New Mexico State

November 25 at Convention Center



Karen Fey

Location: Las Cruces, New Mexico
Conference: Intermountain
Nickname: Roadrunners
Colors: Crimson and White
Homecourt: Pan American Center (13,222)
Athletic Director: Keith Colson
Sports Information: Dave Lopez
(505) 646-3929
1977-78 Record: 16-13
Series Record: First Meeting

Head Coach: Karen Fey (4 years, 67-31,)
Assistant Coach: Linda Koch
Letterwinners Lost: 6
Letterwinners Returning:
Katrina Dunnagan (6-0, SO, C, 15.2 ppg, 8.5 rpg)
Donna Goggin (5-9, SR, F-G, 10.6 ppg, 6.9 rpg)
Gail Cozzens (5-10, SO, F-G, 8.1 ppg, 5.6 rpg)
Theresa Jaramillo (5-6, SR, G, 7.8 ppg, 2.9 rpg)
Top Newcomers:
Shelly Lichfeldt (6-1, FR, Center)
Cheryl Hansen (5-11, JR, Center)
Denise Ashby (5-9, JR, Forward-Guard)



University of Arizona

November 30 at UNLV South Gym



Lori Woodman

Location: Tucson, Arizona
Enrollment: 27,000
Conference: Intermountain
Nickname: Wildcats
Colors: Blue and Red
Homecourt: McKale Center Arena (14,800)
Athletic Director: Mary P. Roby
Sports Information: Pam Stone
(602) 626-4168
1977-78 Record: 4-14
Series Record: Tied, 1-1
63-96 (1974-75)
117-51 (1975-76)

Head Coach: Lori Woodman (1 year, 4-14)
Assistant Coach: Janet Wood
Letterwinners Returning:
Sarah Buxton (5-5, JR, G, 3.8 ppg, 0.8 rpg)
Janet Goschiniski (5-11, SO, F-C, 10.0 ppg, 4.6 rpg)
Julie Schulz (5-6, SR, G, 10.5 ppg, 2.9 rpg)
Dorothy Sisneros (5-9, SR, G, 8.4 ppg, 4.2 rpg)
Kris Stewart (5-8, SO, F, 1.1 ppg, 2.8 rpg)
Top Newcomers:
Bonnie Banas (5-6, FR, Guard)
Chris Caliway (5-10, FR, Forward)
Pam Roberts (5-7, FR, Guard)

Cal State, Northridge

December 2 at Convention Center

Location: Northridge, California
Enrollment: 25,000
Conference: SCAC
Nickname: Matadors
Colors: Scarlet and White
Athletic Director: Judith M. Brame
Sports Information: Dan Weil
(213) 885-3243
1977-78 Record: 19-6
Series Record: First Meeting

Head Coach: Judith M. Brame (4 years, 43-35)
Assistant Coach: Leslie Trapnell
Letterwinners Lost: 1
Letterwinners Returning:
Roz Goldenberg (5-7, SR, F-G)
Leslie Milke (5-5, SR, G)
Paula Moran (5-11, SR, F)
Maureen Rubert (5-11, SR, P)
Marlo Stil (5-11, JR, F)
Sandy Howard (5-8, SR, F)
Top Newcomers:
Terry Gallus (5-8, FR, Forward)
Arnetta Robinson (5-6, FR, Guard)
Tracy Burns (5-11, SO, Post)
Nancy Katayama (5-4, FR, Guard)



Arizona State University

December 4 at Convention Center

Location: Tempe, Arizona
Enrollment: 35,000
Conference: Intermountain
Nickname: Sun Devils
Colors: Maroon and Gold
Homecourt: Activity (14,200)
Athletic Director: Dr. Fred Miller
Sports Information: Betty Hess
(602) 965-6592
1977-78 Record: 6-16
Series Record: UNLV 4-0
69-33 (1974-75)
82-28 (1975-76)
88-57 (1976-77)
106-80 (1977-78)

Head Coach: Paul Long (First Year)
Letterwinners Lost: 6
Letterwinners Returning:
Cathy Aiken (5-9, JR, F, 14.5 ppg, 4.7 rpg)
Cathy Pontius (5-3, SR, G, 4.3 ppg, 1.5 rpg)
Kim Griffie (5-10, SO, F, 6.3 ppg, 5.4 rpg)
Nancy Aiken (5-6, JR, G, 3.1 ppg, 1.5 rpg)
Kathy Pugh (5-10, SO, F, 4.8 ppg, 3.9 rpg)
Debbie Edwards (6-2, SR, C, 1.6 ppg, 2.8 rpg)
Kathy Hunter (sat out last season with injury)
Top Newcomers:
Patty VanDevander (5-9, FR, Forward)
Mary Swette (5-7, FR, Forward)
Linda Englehart (5-7, FR, Forward)



University of Maryland

NIKE Tournament of Champions
December 8-9



Chris Weller

Location: College Park, Maryland
Enrollment: 35,320
Conference: Atlantic Coast Conference
Conference: Region 1-B EIAIW
Nickname: Terrapins, Terps
Colors: Red & White/Black & Gold
Homecourt: Cole Field House (14,500)
Athletic Director: Carl James
Sports Information: Patti Wessel
(301) 454-2123
1977-78 Record: 27-4
Series Record: First Meeting

Head Coach: Chris Weller (64-14, 3 years)
Assistant Coach: Monica Merkel, Martha Hasting
Letterwinners Lost: 4
Letterwinners Returning:
Betsy Bailey (5-9, SO, G, 12.7 ppg)
Kris Kirchner (6-3, SO, C, 13.5 ppg, 10.5 rpg)
Debbie Stewart (6-1, SR, F, 10.1 ppg, 6.7 rpg)
Jane Zivalich (5-9, SR, F, 12.4 ppg)
Lisa Abood (5-6, SR, G, 2.9 ppg)
Gail Hook (6-1, SO, F, 4.6 ppg)
Top Newcomers:
Myra Waters (5-10, FR, Guard-Forward)
Lynn Callander (5-6, FR, Guard)
Lydia McAiley (6-1, FR, Forward-Center)



North Carolina State University

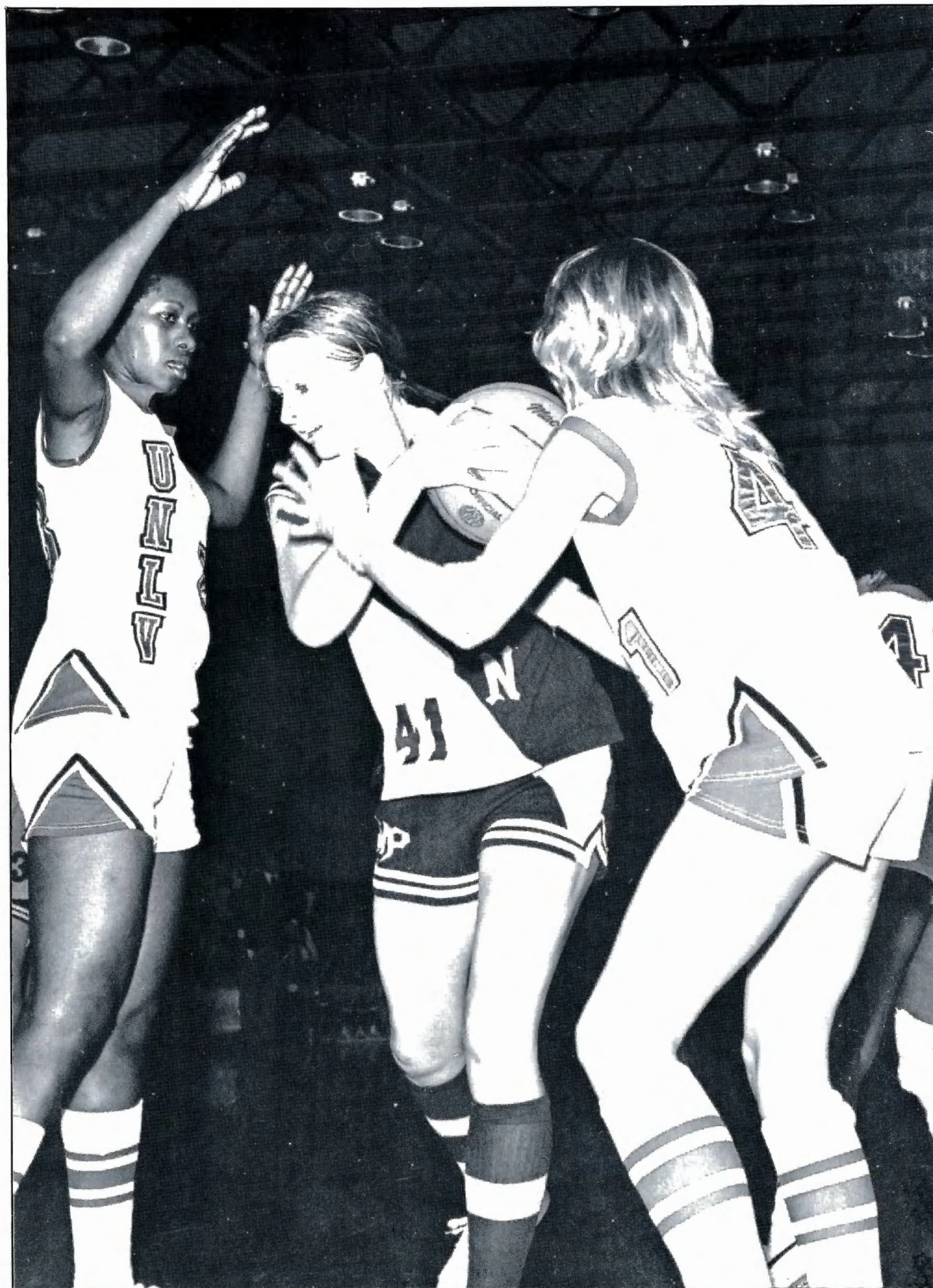
NIKE Tournament of Champions
December 8-9



Genia Beasley

Location: Raleigh, North Carolina
Enrollment: 17,800
Conference: NCAIAW and ACC
Nickname: Wolfpack
Colors: Red and White
Homecourt: Reynolds Coliseum (12,400)
Athletic Director: Willis R. Casey
Sports Information: Ed Seaman
(919) 737-2102
1977-78 Record: 29-5
Series Record: First Meeting

Head Coach: Kay Yow (4 years, 128-34)
Assistant Coach: Nora Lynn Finch
Letterwinners Lost: 5
Letterwinners Returning:
Genia Beasley (6-2, JR, C, 19.3 ppg, 10.6 rpg)
Cristy Earnhardt (5-9, SR, F, 8.7 ppg, 4.7 rpg)
Ginger Rouse (5-10, SO, G, 9.3 ppg, 3.3 rpg)
Trudi Lacey (5-10, SO, F, 11.7 ppg, 4.7 rpg)
Ronnie Laughlin (6-0, JR, F, 9.3 ppg, 4.6 rpg)
Kelia Coffey (5-7, JR, G, 1.2 ppg, 0.5 rpg)
June Doby (6-5, JR, C, 4.4 ppg, 3.5 rpg)
Beth Fielden (5-6, SO, G, 5.4 ppg, 1.8 rpg)
Michelle Parker (5-6, JR, G, 0.5 ppg, 0.8 rpg)
Lorraine Owen (5-10, SR, F, 3.3 ppg, 1.6 rpg)
Top Newcomers:
Connie Rogers (5-8, FR, Guard)



Montclair State University

NIKE Tournament of Champions
December 8-9



Maureen Wendelken



Pat Colasurdo

Location: Upper Montclair, New Jersey
Enrollment: 7,500
Conference: NJIAW, EIAW
Nickname: Squaws
Colors: Red and White
Homecourt: Panzer Gym (1,500)
Athletic Director: Bill Dioguardi
Sports Information: Stan Gorlick
(201) 893-5249
1977-78 Record: 25-7
Series Record: First Meeting

Head Coach: Maureen Wendelken (3 years, 69-15)
Assistant Coach: Charlie DiPaolo
Letterwinners Lost: 6
Letterwinners Returning:
Pat Colasurdo (5-9, SR, F-C, 11.6 ppg, 8.3 rpg)
Jill Jeffrey (5-1, JR, G, 6.7 ppg, 1.4 rpg)
Cathy Meyers (5-3, JR, G, 5.1 ppg, 1.5 rpg)
Karen Smith (5-9, SR, F, 6.2 ppg, 4.2 rpg)
Alice Schmidt (5-6, JR, G, 3.8 ppg, 2.4 rpg)
Janice Ternyik (6-0, SR, C, 3.3 ppg, 2.9 rpg)
Top Newcomers:
Robin Crawford (5-9, FR, Forward)
Fran Klak (5-11½, FR, Center)
Daisy Flood (5-4, FR, Guard)



Utah State University

December 16 at UNLV South Gym

Location: Logan, Utah
Enrollment: 9,500
Conference: Region 7 AIAW
Nickname: Aggies
Colors: Navy Blue and White
Homecourt: University Field House (10,000)
Athletic Director: Marilyn Weiss
Sports Information: Lyle Knudson
(801) 752-4100 ext. 8361
1977-78 Record: 9-14
Series Record: UNLV 6-1

63-70 (1974-75)
104-55 (1975-76)
84-52 (1975-76)
110-49 (1976-77)
105-75 (1975-77)
111-71 (1977-78)
88-71 (1977-78)



Cindy Perkins



Jerrie McGahan

Head Coach: Cindy Perkins, First Year
Letterwinners Lost: 5
Letterwinners Returning:
Jerrie McGahan (6-0, JR, F, 14.3 ppg, 9.9 rpg)
Pam Shirley (5-6, SR, G, 12.2 ppg, 2.1 rpg)
Dorinda Carey (5-8, SO, G, 3.7 ppg, 2.0 rpg)
Brenda House (5-9, SO, F, 12.7 ppg, 5.3 rpg)
Patty Montgomery (6-0, SR, C-F, 12.6 ppg, 8.4 rpg)
Donna Hull (6-2, SR, C, 9.0 ppg, 8.2 rpg)
Top Newcomers:
Faye Rex (5-9, JR, Forward)
Donna Gilcrest (5-9, FR, Guard)



San Francisco State University

December 19 at Convention Center

Location: San Francisco, California
Enrollment: 23,000
Conference: Golden State Conference
Nickname: Gators
Colors: Purple and Gold
Homecourt: Gator Gym (2,000)
Athletic Director: Bill Partlow
Sports Information: Dirk W. Smith
(415) 469-1579
1977-78 Record: 16-10
Series Record: UNLV 1-0
86-69 (1977-78)

Head Coach: Gooch Foster (10 years, 141-33)
Assistant Coach: Coni Staff
Letterwinners Lost: 4
Letterwinners Returning:
Dianna Grayer (6-1, SR, C, 18.7 ppg, 9.3 rpg)
Kim Miller (5-10, SR, F, 17.6 ppg, 6.2 rpg)
Kim Rickman (6-0, SO, C, 5.6 ppg, 6.8 rpg)
D. Pels (5-10, SO, G, 4.7 ppg, 5.6 rpg)

Texas A&M University

December 20 & 21 at UNLV South Gym

Location: College Station, Texas
Enrollment: 30,901
Conference: Southwest Conference
Nickname: Aggies
Colors: Maroon and White
Athletic Director: Kay Don
Sports Information: Paige Beasley
(713) 845-6033
1977-78 Record: 19-18
Series Record: UNLV 1-0
108-92 (1976-77)

Head Coach: Wanda Bender (20 years, 474-166)
Letterwinners Lost: 4
Letterwinners Returning:
Margaret Byrne (5-0, SR, F, 6.3 ppg, 4.5 rpg)
Cindy Gough (5-9, SR, F, 5.8 ppg, 6.1 rpg)
Von Bunn (5-5, JR, G, 11.5 ppg, 2.6 rpg)
Susan Kimbro (5-10, JR, C, 5.0 ppg, 6.3 rpg)
Pat Werner (6-0, JR, C, 11.8 ppg, 6.1 rpg)
Trigg Crawford (5-11, SO, C, 7.2 ppg, 5.2 rpg)
Top Newcomers:
Peggy Pope (5-10, JR, Center)
Lola Baker (5-6, JR, Forward)
Lisa Hughes (5-4, JR, Guard)
Karen Gentz (5-6, JR, Forward)



Northwest Missouri State University

Round Robin Tourney
January 3-6



John Poulson



Julie Chadwick

Location: Marysville, Missouri
Enrollment: 4,100
Conference: Missouri AIAW
Nickname: Bearkittens
Colors: Green and White
Homecourt: Lamkin Gymnasium (4,000)
Athletic Director: Richard Flanagan
Sherri Reeves
Sports Information: Mike Kiser
(816) 582-7141 ext. 1118
1977-78 Record: 20-8
Series Record: First Meeting

Head Coach: John Poulson (2 years, 37-18)
Assistant Coach: B.J. Pratt
Letterwinners Lost: 4
Letterwinners Returning:
Julie Chadwick (5-11, SO, F-C, 10.6 ppg, 7.7 rpg)
Suzi Livengood (5-9, SR, F, 8.0 ppg, 5.7 rpg)
DeDe Miller (5-6, JR, G, 4.3 ppg, 2.3 rpg)
Cheryl Nowack (5-10, SO, C, 2.8 ppg, 2.3 rpg)
Patty Painter (5-10, SO, F, 7.3 ppg, 3.8 rpg)
Julie Schmitz (5-5, SR, G, 12.9 ppg, 3.8 rpg)
Top Newcomers:
Teresa Gumm (5-8, FR, Guard)
Karen Eager (5-6, FR, Guard)
Miriam Heilman (6-0, FR, Forward-Center)
Stephanie House (6-0, FR, Forward-Center)
Valerie House (6-0, FR, Forward-Center)
Rebecca Johnson (6-0, FR, Forward-Center)



Northern Oklahoma College

Round Robin Tournament
January 3-6



Leo Canaday



Robyn Kramer

Head Coach: Leo Canaday (5 years, 105-34)
Assistant Coach: Pete Jensen
Letterwinners Returning:
Teresa Curl (5-8, SO, 6.0 ppg, 4.0 rpg)
Cherri Fast (5-9, SO, 5.0 ppg, 4.0 rpg)
Lynn Fine (5-9, SO, 6.5 ppg, 2.0 rpg)
Robyn Kramer (5-10, SO, 10.0 ppg, 4.0 rpg)
Kim Ladner (6-0, SO, 3.0 ppg, 5.0 rpg)
Susan Mueggenborg (5-3, SO, 5.0 ppg, 1.0 rpg)
Paula Stout (6-0, SO, 4.5 ppg, 4.0 rpg)
Ava Thompson (5-10, SO, 6.0 ppg, 3.0 rpg)

Location: Tonkawa, Oklahoma
Enrollment: 1500
Conference: Oklahoma Juco Conference
Nickname: Mavericks
Colors: Red and White
Homecourt: Gymnasium (1200)
Athletic Director: Leo Canaday
Sports Information: Mike Rieke
(405) 628-2581 ext. 44
1977-78 Record: 25-6
Series Record: First Meeting

Temple Junior College

Las Vegas Round Robin Tourney
January 3-6



Frances Garmon

Location: Temple, Texas
Enrollment: 2,200
Conference: Texas Junior College
Nickname: Leopardettes
Colors: Black and Gold
Homecourt: Gymnasium (1500)
Athletic Director: Jim Brown
Sports Information: Susan Howe
(817) 773-9961
1977-78 Record: 25-10
Series Record: UNLV 2-0
89-70 (1976-77)
95-84 (1976-77)

Head Coach: Frances Garmon
Assistant Coach: None
Letterwinners Lost: 8
Letterwinners Returning:
Brenda Beckwith (5-10, SO, F, 7.2 ppg, 2.1 rpg)
Susie Kramer (5-10, SO, C, 9.3 ppg, 5.9 rpg)
Cynthia Sharp (5-9, SO, F, 4.4 ppg, 2.6 rpg)
Top Newcomers:
Cynthia Barefield (5-4, FR, Guard)
Debbie Polk (5-10, FR, Center)
Rae White (6-2, FR, Center)



University of Texas - El Paso

January 9 at Convention Center

Location: El Paso, Texas
Enrollment: 14,500
Conference: Intermountain
Nickname: Miners
Colors: Orange and White
Athletic Director: Jim Bowden
Sports Information: Scott Binning
(915) 747-5330
Series Record: First Meeting

Head Coach: Wayne Thornton, First Year

Letterwinners Returning:
Not available at press time

Top Newcomers:
Not available at press time



University of Utah

January 11 at UNLV South Gym
February 26 at Salt Lake City, Utah

Location: Salt Lake City, Utah
Enrollment: 23,000
Conference: Intermountain (Region 7)
Nickname: Utes, Runnin' Utes
Colors: Red and White
Homecourt: Special Events Center (15,000)
Athletic Director: Fern Gardner
Sports Information: Shelley Blundell
(801) 581-8171

1977-78 Record: 21-9

Series Record: UNLV 4-1

64-70 (1974-75)
72-61 (1975-76)
72-65 (1975-76)
89-44 (1976-77)
103-70 (1976-77)

Head Coach: Fern Gardner (10 years, 210-50)

Letterwinners Lost: 4

Letterwinners Returning:

Lori Parrish (5-8, JR, F, 15.5 ppg, 9.3 rpg)
Mo Eckroth (6-0, SR, F, 12.8 ppg, 6.5 rpg)
Jane Quimby (5-10, SO, F, 8.4 ppg, 4.8 rpg)
Mona Stevens (5-7, SR, G, 5.2 ppg, 1.6 rpg)
Holly Waldram (5-8, SO, F, 3.0 ppg, 1.2 rpg)
Pam Anderson (5-7, JR, F, 1.9 ppg, 1.0 rpg)

Top Newcomers:

Lisa Stolarczyk (5-9, FR, Forward)
Stacey Antencio (6-0, FR, Center)
Dixie Wood (5-5, FR, Guard)



Kathy Marpe

University of New Mexico

January 12 at UNLV South Gym
February 14 at Albuquerque, New Mexico

Location: Albuquerque, New Mexico
Enrollment: 22,000
Conference: Intermountain
Nickname: Lobos
Colors: Cherry, Silver and Turquoise
Homecourt: Arena (18,000)
Athletic Director: Linda Estes
Sports Information: Susan Craig
(505) 277-2338

1977-78 Record: 19-8

Series Record: UNLV 5-0

71-64 (1974-75)
72-53 (1976-77)
93-54 (1976-77)
94-74 (1977-78)
96-78 (1977-78)

Head Coach: Kathy Marpe (4 years, 48-34)

Assistant Coach: Rick Harden

Letterwinners Lost: 4

Letterwinners Returning:

Jean Roskummdt (5-9, JR, G, 15.9 ppg, 6.7 rpg)
Tawyn Bachis (5-9, SO, F, 10.5 ppg, 6.6 rpg)
Cindy Fischer (5-5, JR, G, 10.0 ppg)

Top Newcomers:

Dee Weinreis (6-2, FR, Forward-Center)
Debbie Weinreis (6-3, FR, Forward-Center)
Muffin Raff (5-6, FR, Guard)



Cal Poly - Pomona

January 13 at UNLV South Gym



Darlene May



Robbie Beyer

Location: Pomona, California
Enrollment: 14,500
Conference: SCAA
Nickname: Broncos
Colors: Green and Gold
Homecourt: Poly Pavilion (500)
Athletic Director: Don Warhurst
Sports Information: Grayle Howlett
(714) 598-4614
1977-78 Record: 31-4
Series Record: UNLV 1-0
87-83 (1977-78)

Head Coach: Darlene May (4 years, 95-22)

Assistant Coach: Donna Schein

Letterwinners Lost: 2

Letterwinners Returning:

Robbie Beyer (6-1, JR, F, 12.3 ppg, 8.7 rpg)
Musiette McKinney (5-10, SR, F-G, 15.4 ppg, 5.7 rpg)
Brenda Yecke (6-0, SO, F, 9.2 ppg, 5.4 rpg)
Karen Olson (5-7, JR, G, 5.5 ppg, 0.9 rpg)
Mary Jo Leonard (5-8, SO, F-G, 3.9 ppg, 2.1 rpg)
Jill Spencer (5-8, SR, F-G, 5.7 ppg, 2.1 rpg)
Carolyn Topf (5-10, JR, F, 9.6 ppg, 3.8 rpg)

Top Newcomers:

Peggy Reid (5-10, JR, Forward)

Brigham Young University

January 27 at Convention Center
February 27 at Provo, Utah

Location: Provo, Utah
Enrollment: 25,000
Conference: Intermountain
Nickname: Cougars
Colors: Blue and White
Homecourt: Marriott (23,000)
Athletic Director: Lu Wallace
Sports Information: Ellen Larsen
(801) 374-1211 ext. 4511

1977-78 Record: 22-6

Series Record: UNLV 2-0

58-55 (1974-75)
90-73 (1977-78)

Head Coach: Dr. Courtney Leishman (1 year, 22-6)

Letterwinners Lost: 1

Letterwinners Returning:

Tina Gunn (6-5, JR, C, 26.1 ppg, 15.6 rpg)
Rosemary Jensen (5-11, SO, C-F, 14.0 ppg, 7.5 rpg)
Judy Hunter (5-8, JR, F)
Julianna Loveall (5-4, JR, G)
Debbie Zirbes (5-6, SR, G)

Top Newcomers:

Jackie Beene (6-0, FR, Center)
Jennifer Cox (5-10, FR, Forward)
Jean Hershberger (5-8, FR, Forward)
Jeanette Weston (5-10, FR, Forward)
Cheryl Cady (5-5, FR, Guard)
Lisa Baron (5-10, FR, Forward)



San Diego State

February 2 at UNLV South Gym

Location: San Diego, California
Enrollment: 33,000
Conference: WCAA
Nickname: Aztecs
Colors: Scarlet and Black
Homecourt: Peterson Gym, Sports Arena
Athletic Director: Ken Karr
Sports Information: Lacy Lee Baker
(714) 287-6845

1977-78 Record: 10-18

Series Record: First Meeting

Head Coach: Richie Spears, First Year

Assistant Coach: Judy LeWinter

Letterwinners Lost: 6

Letterwinners Returning:

Deb Hoistad (6-3, SR, C, 8.4 ppg, 8.2 rpg)
Sheree Small (5-10, JR, F, 5.7 ppg, 3.0 rpg)
Gayle Suttles (5-11, SO, F, 7.6 ppg, 5.4 rpg)
Laura Dion (5-7, SO, G, 13.9 ppg, 2.6 rpg)
Tereee Newman (5-10, SO, F, 5.9 ppg, 3.7 rpg)
Mary Jackson (5-11, SO, C-F, 16.6 ppg, 8.6 rpg)

Top Newcomers:

Kim Ellis (6-0, JR, Center)
Jennie Hinkle (5-7, JR, Guard)
Fran Foli (5-6, JR, Guard)
Maribeth Meyers (5-6, JR, Guard)
Darlene DeWitt (5-6, FR, Guard)
Theresa Thompson (5-8, SO, Forward)

Cal State - Fullerton

February 4 at Convention Center
February 23 at Fullerton, California

Location: Fullerton, California
Enrollment: 22,500
Conference: Western Collegiate Athletic Assoc.
Nickname: Titans
Colors: Blue, Orange and White
Homecourt: Fieldhouse (3,200)
Athletic Director: Leanne Grotke
Sports Information: Chris Gobrecht
(714) 870-2187

1977-78 Record: 16-9
Series Record: Tied 2-2
60-67 (1975-76)
68-70 (1976-77)
93-69 (1977-78)
86-76 (1977-78)

Head Coach: Nancy Dunkle (4 years, 69-18)
Assistant Coach: Debbie Ricketts
Letterwinners Lost: 4
Letterwinners Returning:
Jean Kinn (6-3, JR, C, 9.7 ppg, 9.1 rpg)
Brenda Martin (6-0, SR, F, 13.3 ppg, 8.6 rpg)
Chris O'Sullivan (5-4, JR, G, 7.7 ppg, 1.8 rpg)
Kathy Ricks (5-9, SO, F, 15.6 ppg, 9.2 rpg)
Denise Burtis (5-6, SO, G, 9.2 ppg, 2.7 rpg)
Top Newcomers:
Cheryl Peterson (5-4, FR, Guard)



Pepperdine

February 9 at UNLV South Gym

Location: Malibu, California
Enrollment: 1800
Conference: AIAW
Nickname: Waves
Colors: Blue and Orange
Homecourt: Firestone (3500)
Athletic Director: Laurie Billes
Sports Information: Ginny Creighton
(213) 456-4333

Series Record: UNLV 2-0
108-53 (1976-77)
79-66 (1977-78)

Head Coach: Patty Meyers
Letterwinners Returning:
Kim Bueltel (6-1, JR, Center)
Louann Feuerstein (5-9, JR, Center)
Desiree Marcelin (5-7, JR, Guard)
Konni Brummier (5-7, SO, Guard)
Loretta Butler (5-10, SO, Center-Forward)
Nona Lee (5-5, SO, Guard)
Susie Leonard (5-6, SO, Guard)
Moana Meyer (5-1, SO, Guard)
Tracy Patterson (5-8, SO, Guard)
Tory Riley (5-10, SO, Center-Forward)



University of Kansas

March 3 at UNLV South Gym



Marian Washington

Location: Lawrence, Kansas
Enrollment: 25,000
Conference: Kansas AIAW
Nickname: Jayhawks
Colors: Crimson and Blue
Homecourt: Fieldhouse (16,000)
Athletic Director: Marian Washington
Sports Information: John Weltmer
(913) 864-4938

1977-78 Record: 22-11
Series Record: UNLV 1-0
99-84 (1975-76)

Head Coach: Marian Washington (3 years, 45-33)
Assistant Coach: Kathy Meek
Letterwinners Lost: 1
Letterwinners Returning:
Lynette Woodard (6-1, SO, F, 25.2 ppg, 14.9 rpg)
Adrian Mitchell (5-9, SR, C, 19.7 ppg, 10.2 rpg)
Cheryl Burnett (5-8, JR, G, 9.9 ppg, 3.8 rpg)
Karen Jamison (5-7, SR, G, 6.7 ppg, 1.5 rpg)
Susan Chlystek (5-10, SO, F, 5.9 ppg, 2.7 rpg)
V.C. Sanders (5-6, SR, G, 5.8 ppg, 3.1 rpg)
Top Newcomers:
Shyra Holden (6-2, FR, Center)
Kathy Patterson (5-3, JR, Guard)



Belinda Candler

National Scouting Association

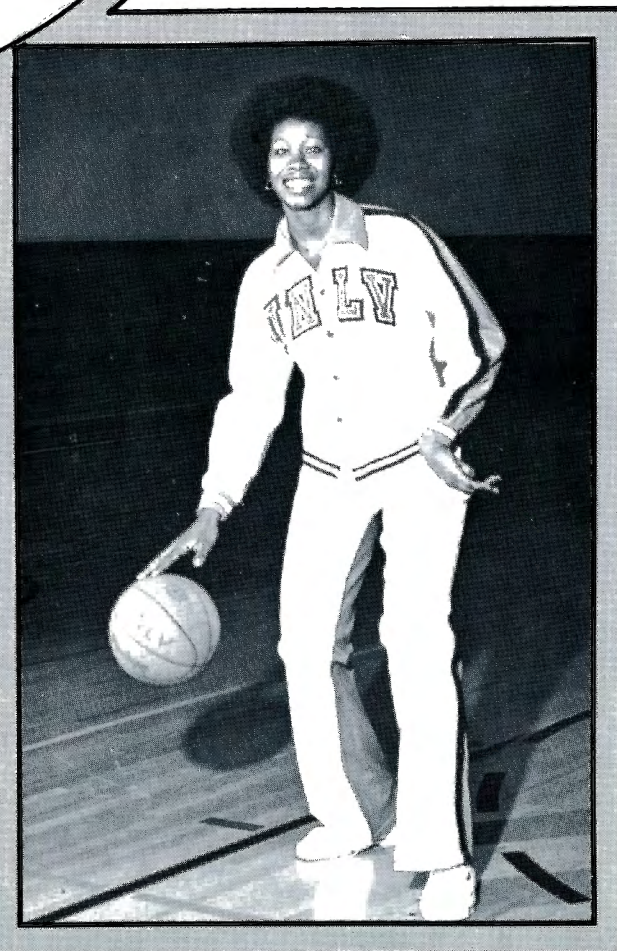
First Team All-America 1977-78



Leaping 5-11 center from Hugo, Oklahoma who was drafted by Houston of the Women's Professional Basketball League....ranks second (941 points) on the all-time Lady Rebel scoring roster....set eleven individual records at UNLV....highest season FG percentage: .555 (226-407), 1977-78....most FT's attempted in a season: 202, 1977-78....most FT's made in a season: 158, 1977-78....most FT's attempted in a game: 19 vs. Drake University, 1/5/78....most FT's made in a game: 14 vs. Drake University, 1/5/78....most rebounds in a game: 22 vs. Utah State University, 12/10/77....highest FG percentage for a career: .554 (349-630), 1976-78....most FT's attempted in a career: 322, 1976-78....most FT's made in a career: 243, 1976-78....highest career FT percentage: .755 (243-322), 1976-78....most career rebounds: 508, 1976-78....wrapped-up her brilliant UNLV career as a District Eight All-Tournament team selection following a 71-point and 41-rebound three-game tournament performance....received All-America honors while playing for the 1976 NJCAA national champion, Seminole (Okla.) Junior College....named Most Valuable Player at both the NJCAA Regional and National Tournaments....listed as an Outstanding Female Athlete in the "Who's Who of American Junior College"....an Oklahoma All-State and Oklahoma-Texas All-Star performer as a prep at Fort Towson High School.

AS A LADY REBEL

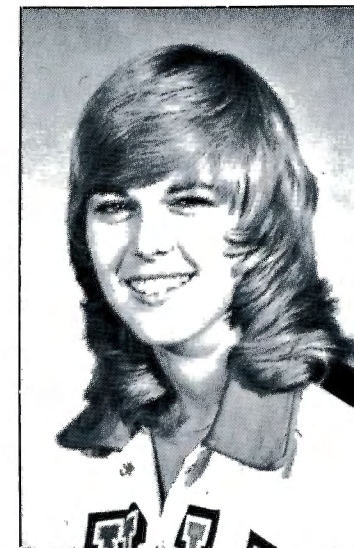
	G	FGM	FGA	Pct.	FTM	FTA	Pct.	Reb.	Ave.	PF	FO	TP	Ave.	A
1976-77	18	123	223	.552	85	120	.708	165	9.2	36	0	331	18.4	11
1977-78	25	226	407	.555	158	202	.782	343	13.7	56	2	610	24.4	18
CAREER	43	349	630	.554	243	322	.755	508	11.8	92	2	941	21.9	29



Janie Fincher

National Scouting Association

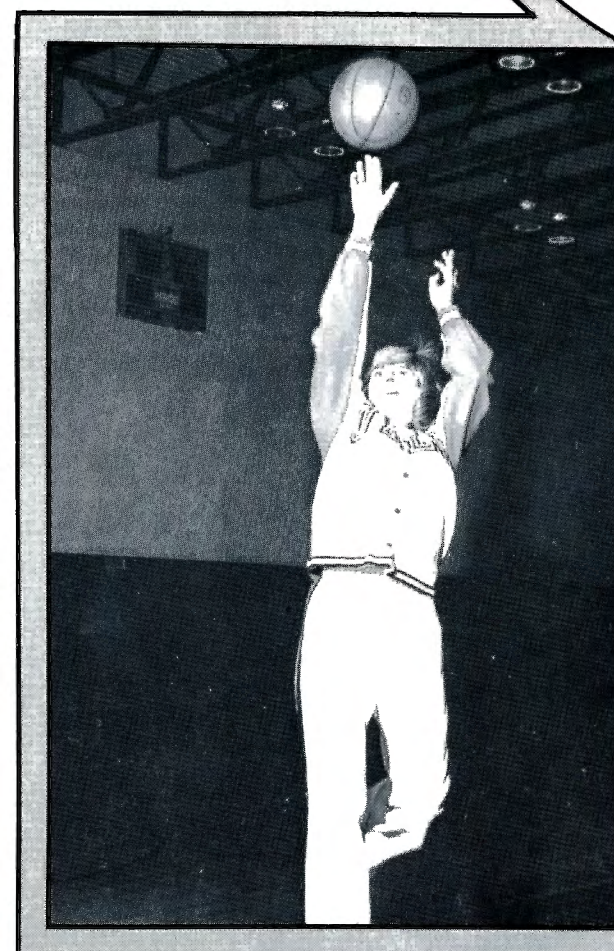
Honorable Mention All-America 1977-78



A native of Skiatook, Oklahoma, and 5-7 forward who was the first-round draft choice of the Chicago franchise of the Women's Professional Basketball League....finished her senior year (and only season at UNLV) as the Lady Rebels' number two scorer with 385 points in 25 games (15.4 ppg average)....second on the squad in both assists (69) and steals (37) while averaging nearly six rebounds per game....only starter who never fouled out of a contest....was the leading Lady Rebel point-getter in five contests....owes a game career high of 32 points in a 93-69 victory over Cal State-Fullerton....prior to coming to UNLV, she performed for the 1971-72 and 1972-73 national junior college champion, Murray State College, in Tishomingo, Oklahoma....received recognition as a member of College Athletes of America and the National Junior College All-Star team....also saw duty for one season at John F. Kennedy College in Nebraska....an AAU All-American, she toured Russia with a U.S. women's basketball team....as a prepster, she was an Oklahoma All-State frontliner for her father and coach, Bob Fincher....was named to the Oklahoma-Texas All Star squad and as the Most Valuable Player in Southwest Oklahoma....also lettered in track and was a member of the volleyball team.

AS A LADY REBEL

	G	FGM	FGA	Pct.	FTM	FTA	Pct.	Reb.	Ave.	PF	FO	TP	Ave.	A
1977-78	25	170	467	.364	45	59	.763	143	5.7	68	0	385	15.4	69



All - Time Lady Rebels

Adamson, Jill - 74-75, 75-76
Affeldti, Toni - 74-75
Alford, Jackie - 74-75, 75-76
Bratcher, Roxi - 75-76
Brown, Renee - 74-75, 75-76
Campsey, Clara - 75-76
Candler, Belinda - 76-77, 77-78
Carter, Anita - 76-77, 77-78
Ethier, Kelly - 77-78
Fincher, Janie - 77-78
Fuller, Diane - 75-76, 77-78
Fuller, Janice - 75-76, 76-77

Galloway, Liz - 75-76, 76-77
Gehrke, Lyn - 75-76
Gonzalez, Gina - 74-75
Gooch, Connie - 75-76
Hudlow, Sherri - 76-77, 77-78
James, Waynette - 74-75
Lemay, Kay - 74-75
Lytle, Tona - 74-75, 75-76
Madrano, Sonia - 74-75
Major, Emma Jean - 74-75, 75-76
Montgomery, Patti - 75-76

Parham, Pam - 76-77
Penquite, Rhonda - 76-77
Perkins, Cindy - 76-77, 77-78
Powell, Sheila - 75-76, 76-77
Rambicure, Beverly - 75-76
Skinner, Chris - 77-78
Tillman, Diane - 76-77, 77-78
Tollefson, Linda - 74-75
Waddy, Debra - 75-76, 76-77
Walker, Mildred - 77-78
Wick, Donna - 75-76, 76-77

Lady Rebels' Best Individual Records

	Game	Season	Career
Points	42-Debra Waddy vs Chico State (1/2/76)	766-Debra Waddy (1975-76)	1105-Debra Waddy (1975-77)
Field Goals	18-Debra Waddy vs Chico State (1/2/76)	332-Debra Waddy (1975-76)	468-Debra Waddy (1975-1977)
Field Goals Attempted	30-Debra Waddy vs Belmont (3/20/76)	642-Debra Waddy (1975-76)	963-Debra Waddy (1975-1977)
Field Goal Percentage (10 or more atts)	.900-Sherri Hudlow 9 of 10 vs Weber State (1/20/78)	.555-Belinda Candler 226-407 (1977-78)	.554-Belinda Candler 349-630 (1976-1978)
Free Throws	14-Belinda Candler vs Drake (1/5/78)	158-Belinda Candler (1977-78)	243-Belinda Candler (1976-1978)
Free Throws Attempted	19-Belinda Candler vs Drake (1/5/78)	202-Belinda Candler (1977-78)	322-Belinda Candler (1976-1978)
Free Throw Percentage (8 or more atts)	.929-Belinda Candler 13 of 14 vs Utah St. (12/9/76)	.788-Debra Waddy 67 of 85 (1976-77)	.755-Belinda Candler 243 of 322 (1976-1978)
Assists	11-Sheila Powell vs Belmont (3/20/76) 11-Donna Wick vs Weber State (2/4/76)	174-Sheila Powell (1975-76)	226-Sheila Powell (1975-1977)
Rebounds	22-Belinda Candler vs Utah State (12/10/77)	431-Janice Fuller (1975-76)	508-Belinda Candler (1976-1978)
Rebound Average		13.9-Janice Fuller (1975-76)	12.5-Janice Fuller (1975-1977)
Scoring Average		25.3-Debra Waddy (1975-76)	23.0-Debra Waddy (1975-1977)
Games Played		31-Janice Fuller Donna Wick Sheila Powell (1975-76)	49-Donna Wick (1975-1977)
Personal Fouls		95-Cindy Perkins (1977-78)	143-Cindy Perkins (1976-1978)
Fouled-Out		9-Cindy Perkins (1977-78)	11-Diane Tillman (1976-1978)

Season Team Records

MOST GAMES PLAYED: 32 (1975-76)
MOST WINS: 27 (1975-76)
MOST LOSSES: 7 (1974-75)
FEWEST WINS: 8 (1974-75)
FEWEST LOSSES: 2 (1977-78)
BEST WIN-LOSS PERCENTAGE: .920 (1977-78)

MOST HOME WINS: 14 (1975-75, 1977-78)
MOST HOME LOSSES: 4 (1974-75)
FEWEST HOME WINS: 6 (1974-75)
FEWEST HOME LOSSES: 0 (1975-76, 1976-77, 1977-78)
BEST HOME WIN-LOSS PERCENTAGE: 1.000 (14-0, 1975-76; 8-0, 1976-77; 14-0, 1977-78)

MOST ROAD WINS: 9 (1975-76)
MOST ROAD LOSSES: 3 (1974-75)
FEWEST ROAD WINS: 2 (1974-75)
FEWEST ROAD LOSSES: 0 (1977-78)
BEST ROAD WIN-LOSS PERCENTAGE: 1.000 (6-0, 1977-78)

MOST WINS, NEUTRAL COURT: 3 (1975-76, 1976-77, 1977-78)
MOST LOSSES, NEUTRAL COURT: 5 (1975-76)
FEWEST WINS, NEUTRAL COURT: 3 (1975-76, 1976-77, 1977-78)
FEWEST LOSSES, NEUTRAL COURT: 2 (1977-78)
BEST WIN-LOSS PERCENTAGE, NEUTRAL COURT: .600 (1977-78)

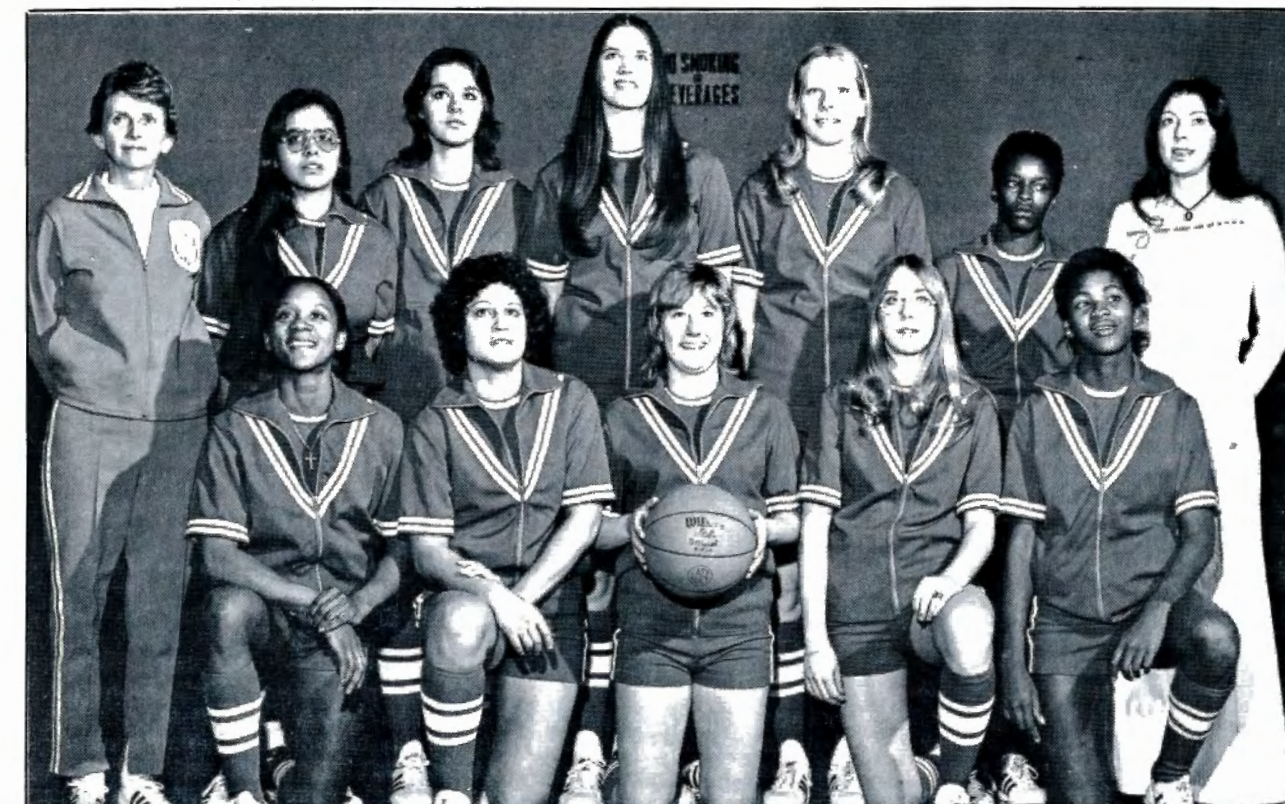
MOST POINTS: 2941 (1976-77)
HIGHEST SCORING AVERAGE: 94.6 (1977-78)
MOST FIELD GOALS ATTEMPTED: 2948 (1975-76)
MOST FIELD GOALS MADE: 1254 (1975-76)
HIGHEST FIELD GOAL PERCENTAGE: .433 (669-1546, 1976-77)
MOST FREE THROWS ATTEMPTED: 760 (1975-76)
MOST FREE THROWS MADE: 516 (1977-78)
HIGHEST FREE THROW PERCENTAGE: .697 (1977-78)
MOST REBOUNDS: 2237 (1975-76)
HIGHEST REBOUND PER GAME AVERAGE: 69.9 (1976-76)
MOST PERSONAL FOULS: 662 (1975-76)
MOST TIMES FOULED-OUT: 33 (1977-78)
MOST ASSISTS: 603 (1975-76)

Game Team Records

MOST FIELD GOALS ATTEMPTED: 132—
vs. Skagit Valley CC (1/12/76)
MOST FIELD GOALS MADE: 56—
vs. Southern Utah State University (1/20/76)
HIGHEST FIELD GOAL PERCENTAGE: .588—(50-85)
vs. University of Colorado (1/9/76)
MOST FREE THROWS ATTEMPTED: 52—
vs. Eastern Oklahoma State (12/9/77)
MOST FREE THROWS MADE: 37—
vs. Eastern Oklahoma State (12/9/77)
HIGHEST FREE THROW PERCENTAGE: .903—(28-31)
vs. San Jose State (3/8/78)
MOST POINTS: 121—
vs. University of Colorado (1/9/77)
MOST REBOUNDS: 92—
vs. Skagit Valley CC (1/12/76)
MOST ASSISTS: 37—
vs. University of Colorado (1/9/77)

Career Team Records

1974 — 1978
GAMES PLAYED: 90
GAMES WON: 72
GAMES LOST: 18
POINTS SCORED: 7912
SCORING AVERAGE: 87.9
FIELD GOALS ATTEMPTED: 7876
FIELD GOALS MADE: 3256
FIELD GOAL PERCENTAGE: .413
FREE THROWS ATTEMPTED: 2278
FREE THROWS MADE: 1400
FREE THROW PERCENTAGE: .615
REBOUNDS: 5486
REBOUND AVERAGE: 60.9
PERSONAL FOULS: 1960
TIMES FOULED OUT: 82
ASSISTS: 1335



1974-75 Lady Rebels — (bottom row, left to right) Emma Jean Major, Kay Lemany, Waynette James, Jill Adamson, and Renee Brown; (top row, l to r): Head Coach Barbara Quinn, Gina Gonzalez, Captain Tona Lytle, Linda Tollefson, Jackie Alford and Team Manager Jane Ann Pete.

Records Against All Opponents

	Series With UNLV	First Game	Year	Last Game	Year
Arizona State	4-0	69-33	1974-75	106-80	1977-78
Arizona, University of	1-1	63-96	1974-75	117-51	1975-76
Baylor University	1-0	107-82	1977-78	107-82	1977-78
Belmont	1-0	81-68	1977-78	81-68	1977-78
Brigham Young University	2-0	58-55	1974-75	90-73	1977-78
BYU of Hawaii	1-0	107-16	1975-76	107-16	1975-76
Cal Poly, Pomona	1-0	87-83	1977-78	87-83	1977-78
Cal State, Fullerton	2-2	60-67	1975-76	86-76	1977-78
Chico State	2-0	83-73	1975-76	85-61	1975-76
Colorado, University of	2-0	121-48	1975-76	103-39	1977-78
Delta State	1-0	82-76	1976-77	82-76	1976-77
Dixie Junior College	1-0	103-29	1974-75	103-29	1974-75
Drake University	1-0	101-86	1977-78	101-86	1977-78
Eastern Oklahoma State	1-0	103-68	1977-78	103-68	1977-78
Hawaii, University of	2-0	103-49	1975-76	96-30	1975-76
Immaculata College	1-0	92-85	1976-77	92-85	1976-77
Indiana State	1-0	87-75	1975-76	87-75	1975-76
Kansas State	1-2	71-73	1976-77	62-89	1977-78
Kansas, University of	1-0	99-84	1975-76	99-84	1975-76
Long Beach State	0-2	70-80	1974-75	75-83	1975-76
Louisiana State	0-1	91-92	1976-77	91-92	1976-77
Nebraska-Lincoln, University of	2-0	96-72	1976-77	92-74	1977-78
Nevada, Reno, University of	2-0	74-63*	1974-75	88-51	1975-76
New Mexico, University of	5-0	71-64	1974-75	96-78	1977-78
Northern Arizona University	1-0	108-20	1975-76	108-20	1975-76
Northern Colorado University	2-0	102-48	1975-76	87-53	1975-76
Palomar College	1-0	70-45	1975-75	70-45	1974-75
Pepperdine	2-0	108-53	1976-77	79-66	1977-78
Rhode Island, University of	0-1	44-55	1974-75	44-55	1974-75
San Francisco State	1-0	86-69	1977-78	86-69	1977-78
San Jose State	1-0	86-55	1977-78	86-55	1977-78
Skagit Valley Community Coll.	2-0	119-26	1975-76	95-38	1975-76
Southern California University	2-1	57-87	1974-75	82-53	1975-76
Southern Utah State	1-0	116-36	1975-76	116-36	1975-76
Temple Junior College	2-0	89-70	1976-77	95-84	1976-77
Texas, University of	0-1	81-87	1976-77	81-87	1976-77
Texas A & M University	1-0	108-92	1976-77	108-92	1976-77
Texas Southern University	1-0	80-64	1976-77	80-64	1976-77
UCLA	0-4	33-99	1975-75	88-100	1977-78
U.C., Riverside	1-0	72-37	1974-75	72-37	1974-75
UC., Santa Barbara	3-0	54-47	1974-75	92-38	1976-77
Utah, University of	4-1	64-70	1974-75	103-70	1976-77
Utah State University	6-1	63-70	1974-75	88-71	1977-78
Wayland Baptist	0-1	55-68	1975-76	55-68	1975-76
Weber State	3-0	111-70	1975-76	110-92	1977-78
William Penn College	1-0	96-80	1977-78	96-80	1977-78

* 30T

ARIZONA STATE UNIVERSITY
UNLV leads series, 4-0
1974-75 — 69-33
1975-76 — 82-28
1976-77 — 88-57
1977-78 — 106-80

ARIZONA, UNIVERSITY OF
Series tied at 1-1
1974-75 — 63-96
1975-76 — 117-51

BAYLOR UNIVERSITY
UNLV leads series, 1-0
1977-78 — 107-82

BELMONT
UNLV leads series, 1-0
1975-76 — 81-68

BRIGHAM YOUNG UNIVERSITY
UNLV leads series, 2-0
1974-75 — 58-55
1977-78 — 90-73

BYU OF HAWAII
UNLV leads series, 1-0
1975-76 — 107-16

CAL POLY, POMONA
UNLV leads series, 1-0
1977-78 — 87-83

CAL STATE, FULLERTON
Series tied at 2-2
1975-76 — 60-67
1976-77 — 68-70
1977-78 — 93-69
1977-78 — 86-76

CHICO STATE
UNLV leads series, 2-0
1975-76 — 83-73
1975-76 — 85-61

COLORADO, UNIVERSITY OF
UNLV leads series, 2-0
1975-76 — 121-48
1977-78 — 103-39

DELTA STATE UNIVERSITY
UNLV leads series, 1-0
1976-77 — 82-76

DIXIE JUNIOR COLLEGE
UNLV leads series, 1-0
1974-75 — 103-29

DRAKE UNIVERSITY
UNLV leads series, 1-0
1977-78 — 101-86

EASTERN OKLAHOMA STATE
UNLV leads series, 1-0
1977-78 — 103-68

HAWAII, UNIVERSITY OF
UNLV leads series, 2-0
1975-76 — 103-49
1975-76 — 96-30

IMMACULATA COLLEGE
UNLV leads series, 1-0
1976-77 — 92-85

INDIANA STATE UNIVERSITY
UNLV leads series, 1-0
1975-76 — 87-75

KANSAS STATE UNIVERSITY
KSU leads series, 2-1
1976-77 — 71-73
1977-78 — 113-84
1977-78 — 62-89

KANSAS, UNIVERSITY OF
UNLV leads series, 1-0
1975-76 — 99-84



1977-78 UNLV LADY REBELS—Standing (left to right): Trainer Fran Mendoza, assistant coach Donna Wick, Cynthia Mangrum, Anita Carter, Sheila Powell, Linda Crockrom, Jane Fincher, Diane Fuller, Chris Skinner, Kelly Ethier, and head coach Dan Ayala. Kneeling (left to right): Sherri Hudlow, Belinda Candler, Mildred Walker, Cindy Perkins, Diane Tillman, and Joan Thomas.

LONG BEACH STATE
LBS leads series, 2-0
1974-75 — 70-80
1975-76 — 75-83

LOUISIANA STATE UNIVERSITY
LSU leads series, 1-0
1976-77 — 91-92

NEBRASKA-LINCOLN, UNIVERSITY OF
UNLV leads series, 2-0
1976-77 — 96-72
1977-78 — 92-74

NEVADA-RENO, UNIVERSITY OF
UNLV leads series, 2-0
1974-75 — 74-63 (30T)
1975-76 — 88-51

NEW MEXICO, UNIVERSITY OF
UNLV leads series, 5-0
1974-75 — 71-64
1976-77 — 72-53
1976-77 — 93-54
1977-78 — 94-74
1977-78 — 96-78

NORTHERN ARIZONA UNIVERSITY
UNLV leads series, 1-0
1975-76 — 108-20

NORTHERN COLORADO UNIVERSITY
UNLV leads series, 2-0
1975-76 — 102-48
1975-76 — 87-53

PALOMAR COLLEGE
UNLV leads series, 1-0
1974-75 — 70-45

PEPPERDINE
UNLV leads series, 2-0
1976-77 — 108-53
1977-78 — 79-66

RHODE ISLAND, UNIVERSITY OF
RI leads series, 1-0
1974-75 — 44-55

SAN FRANCISCO STATE
UNLV leads series, 1-0
1977-78 — 86-69

SAN JOSE STATE
UNLV leads series, 1-0
1977-78 — 86-55

SKAGIT VALLEY COMMUNITY COLLEGE
UNLV leads series, 2-0
1975-76 — 119-26
1975-76 — 95-38

SOUTHERN CALIFORNIA UNIVERSITY
UNLV leads series, 2-1
1974-75 — 57-87
1975-76 — 82-53
1975-76 — 82-53

SOUTHERN UTAH STATE
UNLV leads series, 1-0
1975-76 — 116-36

TEMPLE JUNIOR COLLEGE
UNLV leads series, 2-0
1976-77 — 89-70
1976-77 — 95-84

TEXAS, UNIVERSITY OF
Texas leads series, 1-0
1976-77 — 81-87

TEXAS A & M UNIVERSITY
UNLV leads series, 1-0
1976-77 — 108-92

TEXAS SOUTHERN UNIVERSITY
UNLV leads series, 1-0
1976-77 — 80-64

UCLA
UCLA leads series, 4-0
1974-75 — 33-99
1975-76 — 80-84
1975-76 — 77-97
1977-78 — 88-100

U.C., RIVERSIDE
UNLV leads series, 1-0
1974-75 — 72-37

U.C., SANTA BARBARA
UNLV leads series, 3-0
1974-75 — 54-47
1975-76 — 116-58
1976-77 — 92-38

UTAH, UNIVERSITY OF
UNLV leads series, 4-1
1974-75 — 64-70
1975-76 — 72-61
1975-76 — 72-65
1976-77 — 89-44
1976-77 — 103-70

UTAH STATE UNIVERSITY
UNLV leads series, 6-1
1974-75 — 63-70
1975-76 — 104-55

1975-76 — 84-52
1976-77 — 110-49
1976-77 — 105-75
1977-78 — 111-71
1977-78 — 88-71

WAYLAND BAPTIST
Wayland leads series, 1-0
1975-76 — 55-68

WEBER STATE UNIVERSITY
UNLV leads series, 3-0
1975-76 — 111-70
1976-77 — 116-74
1977-78 — 110-92

WILLIAM PENN COLLEGE
UNLV leads series, 1-0
1977-78 — 96-80

Year by Year Results

1974-75

Record: W 8 L 7 (Home 6-4, Away 2-3)

UNLV Opponent	Opp.	Leading Scorer	Leading Rebounder
69 ARIZONA ST. U.	33	Major-23	Major-17
103 DIXIE JR. COLL.	29	Major-22	Major-12
54 U.C. Santa Barbara	47	Adamson,	
		Alford-17	Major-13
72 U.C. RIVERSIDE	37	Alford,	
		Major-17	Brown-15
71 U. OF NEW MEXICO	64	Alford-20	Adamson-15
44 U. of RHODE ISLAND	55	Alford-14	Major-16
74 U. of NEVADA, RENO*	63	Alford-24	Major-19
63 Utah State U.	70	Major-18	Major-12
64 U. of Utah	70	Major-25	Major-15
58 Brigham Young U.	55	Major-28	Major-16
63 U. of Arizona	96	Major-23	Adamson-18
33 UCLA	99	Brown-12	Brown-12
70 LONG BEACH ST.	80	Alford-20	Adamson,
		Alford-21	Major-9
57 U. of SO. CALIFORNIA	87	Brown,	
		Major-16	Major-16
70 PALOMAR COLL.	45	Adamson,	
		Alford-21	Adamson-12

*Triple Overtime

1975-76

Record: W 27 L 5 (Home 14-0, Away 0-1, Neutral 3-5)

UNLV Opponent	Opp.	Leading Scorer	Leading Rebounder
108 NO. ARIZONA U.	20	Waddy,	Montgomery,
		Fuller-13	Wick-8
102 No. Colorado U.*	48	Waddy,	J. Fuller-16
		Fuller-18	
72 U. of Utah*	61	Waddy-32	Waddy-16
104 UTAH STATE U.	55	Waddy-23	J. Fuller-10
95 U. OF MEXICO	59	Waddy-17	J. Fuller,
			Galloway-12
111 WEBER STATE U.	70	Waddy-32	J. Fuller-18
103 U. of Hawaii#	49	Mont-	
		gomery-23	Gooch-15
83 Chico State#	73	Waddy-42	J. Fuller-15
75 Long Beach State#	83	Waddy-25	Waddy-13
121 U. of Colorado	48	Waddy-22	J. Fuller-16
87 No. Colorado U.	53	Waddy-22	J. Fuller-13
119 SKAGIT VALLEY C.C.	26	Waddy-26	J. Fuller-12
95 SKAGIT VALLEY C.C.	38	Gehrke-20	Montgomery-17
82 U. of So. California	53	Waddy-32	J. Fuller-16
80 U.C., Los Angeles	84	Waddy-26	J. Fuller-16
116 SO. UTAH STATE U.	36	Waddy-17	Gehrke-18
72 U. OF UTAH	65	Waddy-34	J. Fuller-21
82 ARIZONA STATE U.	28	Waddy-24	J. Fuller-16
117 U. OF ARIZONA	51	Waddy-30	J. Fuller-15
88 U. of Nevada, Reno	51	Waddy-33	J. Fuller-18
84 UTAH STATE U.	52	Waddy-20	J. Fuller-18
107 B.Y.U. of Hawaii	16	Gehrke-22	J. Fuller-15
96 U. of Hawaii	30	Waddy-24	J. Fuller-15
82 U. OF SO. CALIFORNIA	53	Waddy-20	J. Fuller-20
99 U. OF KANSAS	84	Waddy-34	Galloway-12
116 U.C., SANTA BARBARA	58	Wick-24	Wick-14
85 Chico State‡	61	Waddy-30	J. Fuller-18
60 Fullerton State‡	67	Waddy-21	J. Fuller-18
77 U.C., Los Angeles‡	97	Waddy-21	J. Fuller-16
87 Indiana State+	75	Waddy-30	J. Fuller-14
55 Wayland Baptist+	68	Waddy-25	J. Fuller,
			Galloway-6
81 Belmont+	68	Waddy-35	J. Fuller-9

*Utah Holiday Classic
#Chico State Tournament
‡AIAW Regionals
+NWIT Playoffs

1976-77

Record: W 14 L 4 (Home 8-0, Away 6-4)

UNLV Opponent	Opp.	Leading Scorer	Leading Rebounder
92 IMMACULATA COLL.*	85	Waddy-23	Fuller-8
82 DELTA STATE U.*	76	Waddy-22	Fuller-9
110 UTAH STATE U.	49	Waddy-20	Fuller-10
92 U.C., SANTA BARBARA	38	Candler-27	Candler-12
71 Kansas State U.	73	Waddy-18	Wick-10
108 PEPPERDINE U.	53	Waddy-24	Perkins-12
89 U. of Utah#	44	Waddy-24	Fuller-13
68 Cal State, Fullerton#	70	Waddy,	Perkins,
		Candler-16	Galloway-6
96 U. OF NEB., LINCOLN	72	Waddy-17	Candler-12
105 UTAH STATE U.	75	Waddy,	Candler-13
		Candler-20	
116 WEBER STATE COLL.	74	Tillman-30	Candler-18
80 Texas Southern U.‡	64	Tillman-19	Candler-10
108 Texas A & M‡	92	Waddy-27	Candler-13
91 Louisiana State U.‡	92	Waddy-26	Perkins-11
81 U. of Texas‡	87	Candler-24	Candler-10
72 U. of New Mexico	53	Waddy-19	Galloway-12
93 U. of New Mexico	54	Candler-25	Candler,
		Waddy-7	
88 Arizona State U.	57	Candler-20	Candler-13

*Tournament of Champions
#Cougar Classic
‡Houston Classic

1977-78

Record: W 23 L 2 (Home: 14-0, Away: 6-0, Neutral: 3-2)

UNLV Opponents	Opp.	Leading Scorer	Leading Rebounder
94 U. OF NEW MEXICO	74	Candler-23	Candler-18
96 U. OF NEW MEXICO	78	Fincher-18	Perkins-15
103 EASTERN OKLAHOMA ST.	68	Fincher-19	Candler-17
111 UTAH STATE U.	71	Candler-36	Candler-22
103 U. OF UTAH	70	Fincher-24	Candler-15
89 TEMPLE JUNIOR COLL.	70	Candler-23	Candler-12
95 TEMPLE JUNIOR COLL.	84	Candler-27	Perkins-11
93 CAL ST., FULLERTON+	69	Fincher-32	Candler-15
101 DRAKE U.+	86	Candler-38	Candler-18
96 WILLIAM PENN COLL.+	80	Candler-29	Candler-14
106 ARIZONA STATE U.	80	Candler-27	Candler-8
103 U. OF COLORADO	39	Candler-31	Candler-17
113 KANSAS STATE U.	84	Candler-35	Candler-14
110 Weber State Coll.	92	Candler,	Candler-7
		Hudlow,	
		Perkins-20	
88 Utah State U.	71	Hudlow-22	Candler, Walker,
			Tillman-9
62 Kansas State U.*	89	Candler-18	Walker-13
107 Baylor U.*	82	Candler-30	Candler-14
92 U. of Nebraska, Lincoln	74	Fincher-22	Perkins-10
86 Cal St., Fullerton	76	Candler-31	Candler-13
90 BRIGHAM YOUNG U.	73	Candler-22	Candler-10
79 Pepperdine U.	66	Candler-20	Perkins-10
86 San Francisco St.	69	Candler-28	Candler-19
86 San Jose St.#	55	Candler,	Candler-15
		Walker-17	
87 Cal Poly, Pomona#	83	Candler-24	Candler-12
88 UCLA#	100	Candler-30	Candler-14

+Tournament of Champions
*Jayhawk Classic
#AIAW District 8 Tournament

Coaching Records

Season	Coach	Wins	Losses	Pct.
1974-75	Barbara Quinn	8	7	.533
1975-76	Dan Ayala	27	5	.844
1976-77	Dan Ayala	14	4	.777
1977-78	Dan Ayala	23	2	.920

Years	Coach	Wins	Losses	Pct.
1974-75	Barbara Quinn	8	7	.533
1975-78	Dan Ayala	64	11	.853



Barbara Quinn
1974-75, 8-7



Dan Ayala
1975-78, 64-11

100 Plus Club

UNLV 103, Dixie Junior College 29 (1974-75)
UNLV 108, Northern Arizona University 20 (1975-76)
UNLV 102, Northern Colorado University 48 (1975-76)
UNLV 104, Utah State University 55 (1976-76)
UNLV 111, Weber State University 70 (1975-76)
UNLV 103, University of Hawaii 49 (1975-76)
UNLV 121, University of Colorado 48 (1975-76)
UNLV 119, Skagit Valley Community College 26 (1975-76)
UNLV 116, Southern Utah State University 36 (1975-76)
UNLV 117, University of Arizona 51 (1975-76)
UNLV 107, BYU of Hawaii 16 (1975-76)
UNLV 116, U.C. Santa Barbara 58 (1975-76)
UNLV 110, Utah State University 49 (1976-77)
UNLV 108, Pepperdine University 53 (1976-77)
UNLV 105, Utah State University 75 (1976-77)
UNLV 116, Weber State University 74 (1976-77)
UNLV 108, Texas A & M 92 (1976-77)
UNLV 103, Eastern Oklahoma State 68 (1977-78)
UNLV 111, Utah State University 71 (1977-78)
UNLV 103, University of Utah 70 (1977-78)
UNLV 101, Drake University 86 (1977-78)
UNLV 106, Arizona State University 80 (1977-78)
UNLV 103, University of Colorado 39 (1977-78)
UNLV 113, Kansas State University 84 (1977-78)
UNLV 110, Weber State University 92 (1977-78)
UNLV 107, Baylor University 82 (1977-78)
*Only UCLA (100-88; 1977-78) has scored 100 points against UNLV.

Post Season Action

AIAW Regionals
1975-76

UNLV 85, Chico State 61
UNLV 60, Cal State, Fullerton 67
UNLV 77, UCLA 97

AIAW District 8 Tournament
1977-78

UNLV 86, San Jose State 55
UNLV 87, Cal Poly, Pomona 83
UNLV 88, UCLA 100

NWIT Play-offs
1975-76

UNLV 87, Indiana State 75
UNLV 55, Wayland Baptist 68
UNLV 81, Belmont 68



The Lady Rebels will host the NIKE Tournament of Champions and play eleven of their 22 home games in the 6,357-seat Las Vegas Convention Center.

LADY REBELS IN THE PROS



Belinda Candler
Houston Angels



Janie Fincher
Chicago Hustle



Janice Fuller
Chicago Hustle



Debra Waddy
Chicago Hustle

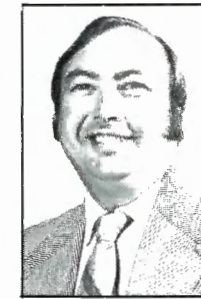


Liz Galloway
Chicago Hustle

BEHIND THE SCENE



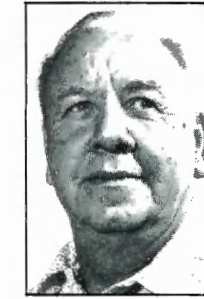
Dr. Donald Baepfer
Chancellor



Sherman Bennett
Ticket Manager



Shirley Blackburn
Fundraising Secretary



Floyd Browning
Equipment Manager



Susan Cahlan
Secretary, Athletic Director



Dominic Clark
Sports Information Director



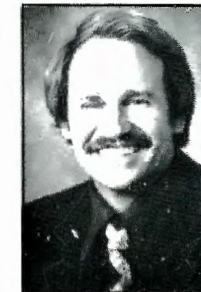
Jinx Cochrell
Football Secretary



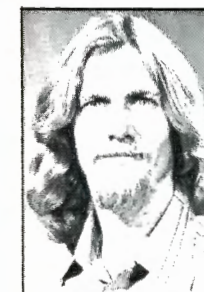
Suzette Cox
Department Secretary



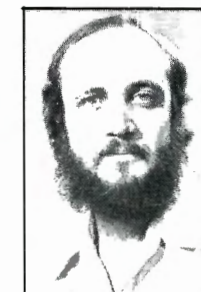
Carol Forsythe
Basketball Secretary



Mark Hughes
Public Information Director



Tom Jones, IV
Head Photographer



Serge McCabe
School Photographer



Dallas Norton
Academic Advisor



Davey Pearl
Booster Coordinator



Wayne Pearson
Asst. Athletic Director,
Development



Le Riggle
Ticket Office Secretary



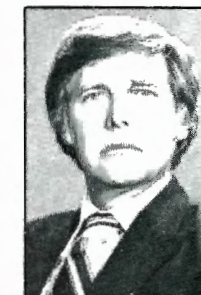
Dale Rudd
Assistant Athletic Trainer



Dennis Ryan
Head Athletic Trainer



Charlotte Summers
Business Management
Assistant



John Tudor
UNLV Advertising Director

1978-79 Lady Rebels Basketball Schedule

DATE	OPPONENT	LOCATION
Nov. 25	New Mexico State University	Convention Center
30	University of Arizona	UNLV South Gym
Dec. 2	Cal State, Northridge	Convention Center
4	Arizona State University	Convention Center
8-9	NIKE TOURNAMENT OF CHAMPIONS UNLV, University of Maryland, No. Carolina St., Montclair State	Convention Center
16	Utah State University	UNLV South Gym
19	San Francisco State	Convention Center
20	Texas A & M University	UNLV South Gym
21	Texas A & M University	UNLV South Gym
Jan. 3-6	Las Vegas Round Robin Tourney UNLV, Temple JC, U. of Mexico, Northern Oklahoma, Northwest Missouri	UNLV South Gym
9	University of Texas-El Paso	Convention Center
11	University of Utah	UNLV South Gym
12	University of New Mexico	UNLV South Gym
13	Cal Poly, Pomona	UNLV South Gym
17-24	U. of Mexico International Classic UNLV, Univ. of Guadalajara, Univ. of Mexico, Univ. of Chihuahua	Mexico City, Mexico
27	Brigham Young University	Convention Center
Feb. 2	San Diego State University	UNLV South Gym
4	Cal State, Fullerton	Convention Center
9	Pepperdine University	UNLV South Gym
14	University of New Mexico	Albuquerque, New Mexico
17	University of Chihuahua	Convention Center
19	University of Chihuahua	Convention Center
23	Cal State, Fullerton	Fullerton, California
26	University of Utah	Salt Lake City, Utah
27	Brigham Young University	Provo, Utah
Mar. 3	University of Kansas	UNLV South Gym
8-9-10	AIAW Western Sub-Regionals	Santa Barbara, CA
16-17	AIAW Western Regionals	Palo Alto, CA
23-25	AIAW National Championships	Raleigh, North Carolina

HOME GAMES: Convention Center - 5:30 pm

UNLV South Gym - 7:30 pm